



INSPIRE Reference Validator and ETF

JRC INSPIRE Team



73rd MIG-T meeting – February 17, 2023

INSPIRE Reference Validator – Releases

Annual releases

As mentioned above, several releases of the INSPIRE Reference Validator are scheduled each year with the main goal of concentrating breaking changes in the first half of the year in order to produce the major release used for the end-of-year Monitoring process already in June. The scheduled annual releases are described in detail in the next sub-sections. In addition to the different infrastructure and deployment environments, the different releases are managed using different branches of the *ets-repository* repository.

For simplicity, the descriptions make explicit reference to releases in the years 2022/2023, but the same release schedule will be applied consistently over the following years:

- v2022.1 - 15/03/2022: it includes both breaking and non-breaking changes.
- v2022.2 - 15/06/2022: it includes both breaking and non-breaking changes.
- v2023.b - 15/06/2022: it includes both breaking and non-breaking changes which are planned to become effective (for Monitoring purposes) in the following year. **version used for Monitoring and Reporting 2022**
- v2022.3 - 15/09/2022: it only includes non-breaking changes, so that any INSPIRE resource passing the test in the previous release automatically passes the same test in this release. This release is the one used for the end-of-year Monitoring process.
- v2023.0 - 15/01/2023: it includes both breaking and non-breaking changes, including those available in the beta instance of the previous year.

INSPIRE Reference Validator – Releases

Annual releases

As mentioned above, several releases of the INSPIRE Reference Validator are scheduled each year with the main goal of concentrating breaking changes in the first half of the year in order to produce the major release used for the end-of-year Monitoring process already in June. The scheduled annual releases are described in detail in the next sub-sections. In addition to the different infrastructure and deployment environments, the different releases are managed using different branches of the *ets-repository* repository.

For simplicity, the descriptions make explicit reference to releases in the years 2022/2023, but the same release schedule will be applied consistently over the following years:

- v2022.1 - 15/03/2022: it includes both breaking and non-breaking changes.
- v2022.2 - 15/06/2022: it includes both breaking and non-breaking changes.
- v2023.b - 15/06/2022: it includes both breaking and non-breaking changes which are planned to become effective (for Monitoring purposes) in the following year.
- v2022.3 - 15/09/2022: it only includes non-breaking changes, so that any INSPIRE resource passing the test in the previous release automatically passes the same test in this release. This release is the one used for the end-of-year Monitoring process. **latest release**
- v2023.0 - 15/01/2023: it includes both breaking and non-breaking changes, including those available in the beta instance of the previous year.

INSPIRE Reference Validator – v.2022.3

v2023.0 - 25/01/2023 Latest

The version published at this time contains breaking and non-breaking changes.

Bugfixes

- [#559 #912](#) ad, au, cp, hy and tn http redirections fixed - [#787](#)
- [#661](#) application/atom+xml and text/xml added as valid types - [#788](#)
- [#852](#) hy-n-as.b.1 geometry manual check - [#789](#)
- [#854](#) noAccessText error message updated - [#790](#)
- [#873](#) Topic category validation fixed - [#791](#)
- [#883](#) nz-ia.a.2 SpecificExposedElementTypeValue path fix - [#792](#)
- [#900](#) WFS Direct dependency updated - [#793](#)
- [#881](#) Docker deployment issue - Docker deployment instructions updated

Validator UI

- [#35](#) Modify default parameters in metadata urls to ensure ISO compliance - [#41](#)
- [#31](#) Wrong dependency between WFS Conformance Classes - [#43](#)
- [#30](#) Indications on the time that tests reports are kept - [#40](#)
- [#29](#) Wrong title in the single test report page - [#39](#)
- [#26](#) "Resource type" filter does not work in production - [#38](#)

Deployment instructions

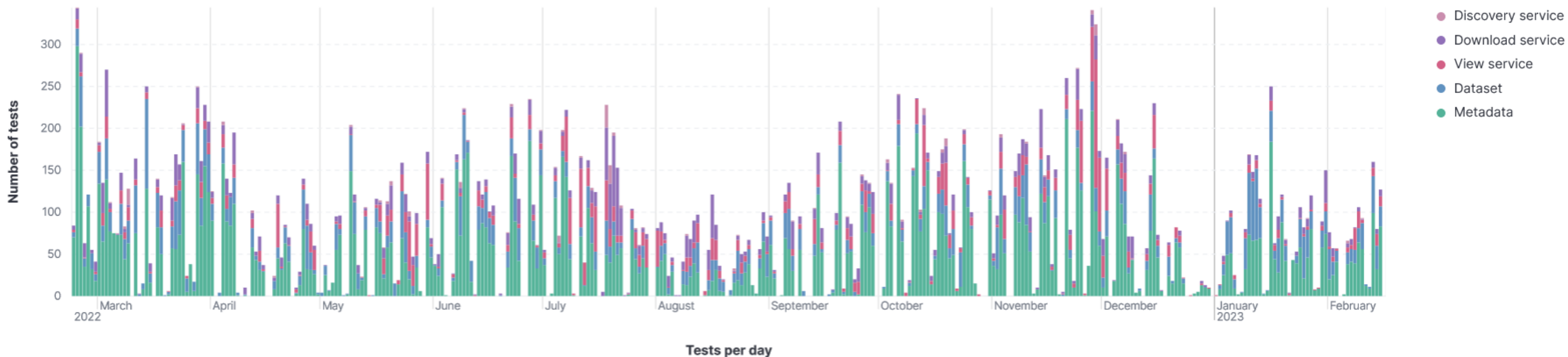
The section containing the deployment process using Docker image and troubleshooting section. You can also find these in the [training material](#)

<https://github.com/INSPIRE-MIF/helpdesk-validator/releases/tag/v2023.0>

INSPIRE Reference Validator – Dashboard

- Created for monitoring the use of the Validator:
 - type, amount, frequency & outcomes of tests
 - technology: Elasticsearch/ Kibana
- A [live demo](#) was offered at the last MIG/MIG-T meeting in Brussels.
- Potential [integration with the new IKB](#) based on feedback.

Temporal evolution of the number of tests for each resource type



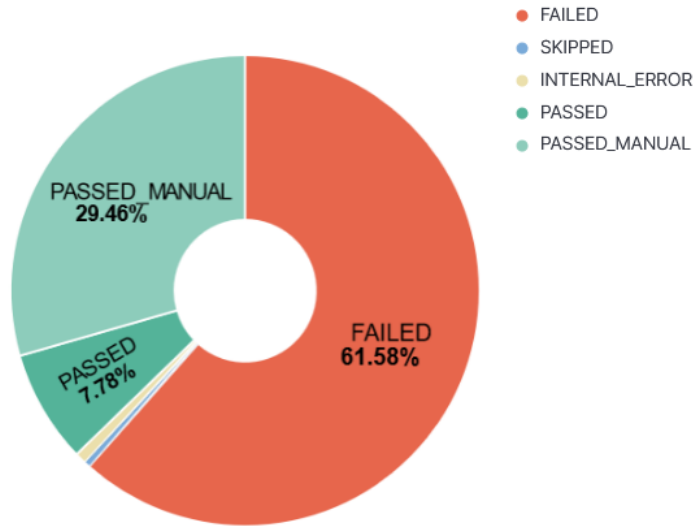
INSPIRE Reference Validator – Dashboard

Total number of tests

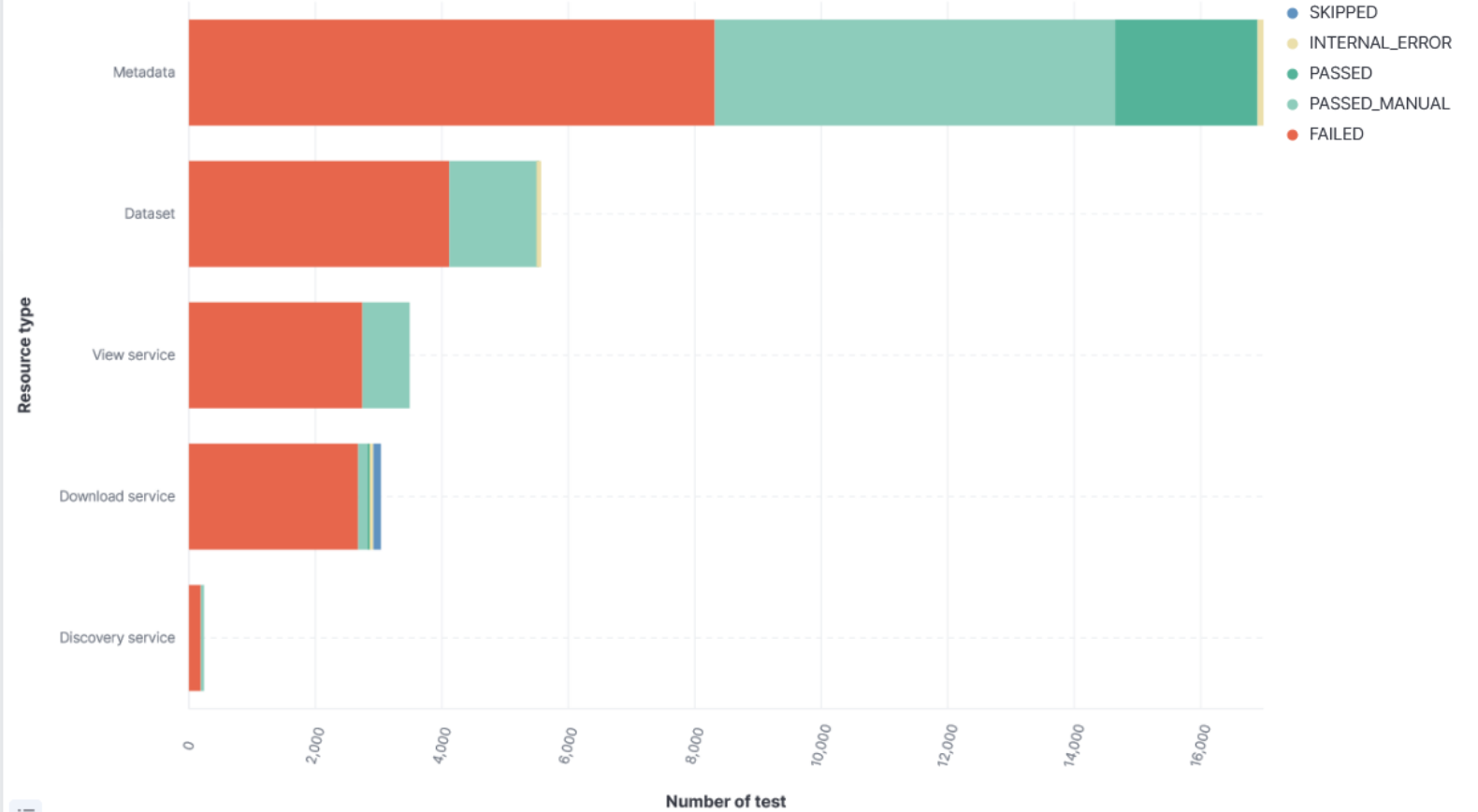
Number of tests

29,460.00

Fractions of overall test outcomes



Number of tests per resource type



INSPIRE Reference Validator – Next tests

- Next tests to be added:
 - tests on metadata implementing the endorsed Good Practice on **data-service linking simplification**

Good Practice: Data and Service Linking Simplification

This repository includes the output of the work of the temporary sub-group of the INSPIRE MIG, aimed to create a Good Practice for a consensus-based simplified approach for INSPIRE data-service linkages.

Context & issue

The current level of accessibility of INSPIRE data sets through view and download services is low. One of the reasons are problems with implementing the data-service linking approach currently described in the TGs for metadata and network services, which is considered complicated and partly ambiguous, even by implementation/standards experts. Many organisations are therefore facing difficulties to provide implementations in line with these requirements, which in turn has reflects negatively on the overall usability of the INSPIRE infrastructure, as shown by the low values (on average) of the Monitoring indicators about the data set accessibility.

Scope of the work

This work, framed within [Action 2.3 "Simplification of INSPIRE implementation"](#) of the [INSPIRE MIWP 2021-2024](#), aims to develop a shared, consensus-based approach for the simplification of data-service linking that is proven to be implementable by de facto standard web applications, to be further submitted as an INSPIRE Good Practice. The new approach will be alternative to (not substituting) the current approach which is already recognised by the INSPIRE Geoportal.

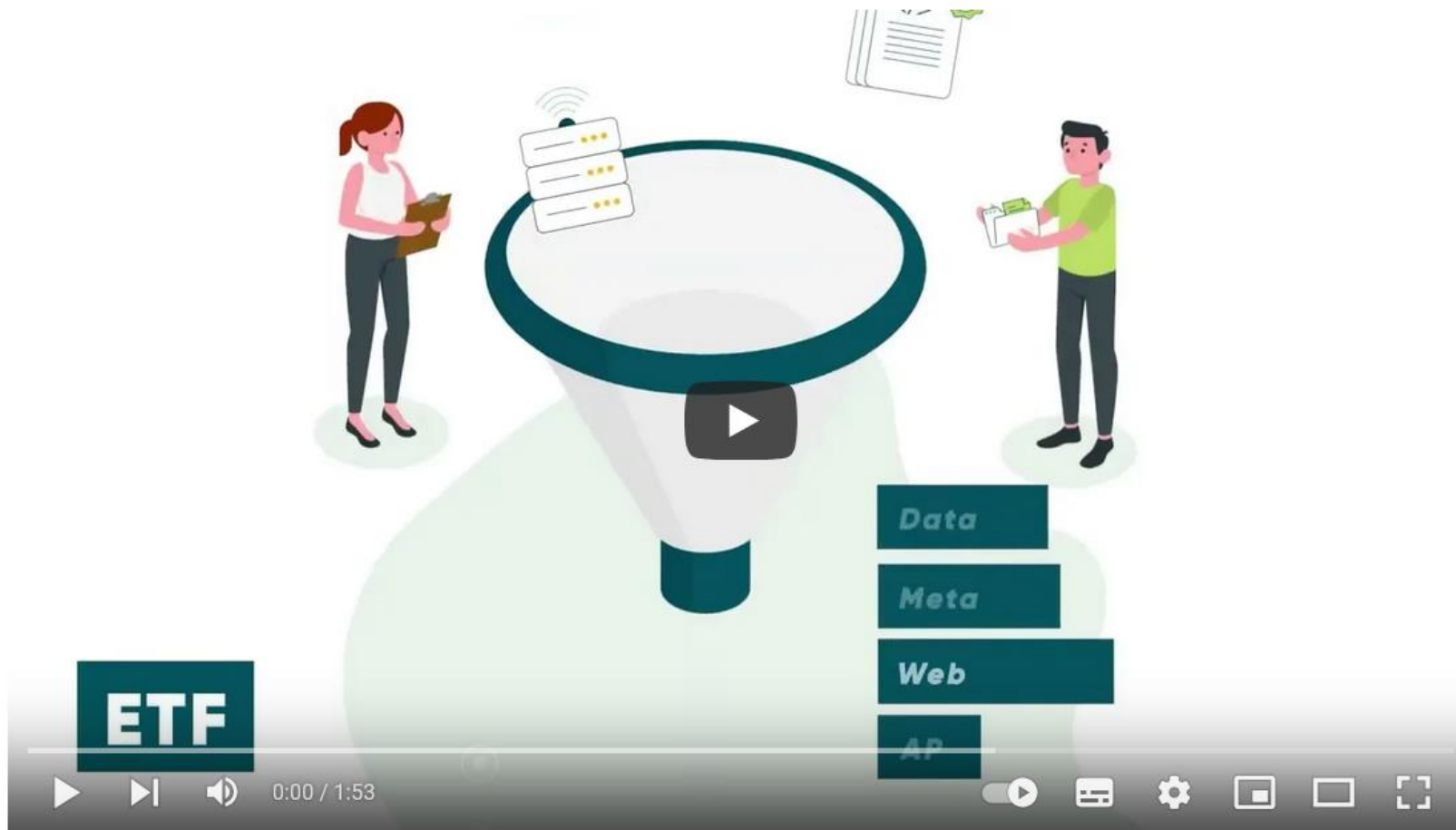
This work is coordinated by the JRC and involves representatives of the following Member States: AT, DE, DK, EL, ES, FR, IT, LT, NL, PL, SE and SK.

ETF – Opportunities for collaboration

- We are looking for organisations that:
 1. are not yet using the ETF but would like to start using it, either for INSPIRE-specific purposes or for other purposes – **we offer help with the deployment**
 2. are already using the ETF: please share with us
 - a. motivation, scope, description of the instance
 - b. URL (if public)
 - c. source code (if public)
 - d. feedback on the usage, suggestions for improvement
 3. are already using the ETF and are available to **fill a survey** (to be launched soon) and **be interviewed** to provide feedback, propose ideas/suggestions for improvement

ETF – New promotional video

https://youtu.be/AvFUa_uEHfs



ETF - an open source validation framework



Inspire EU
831 subscribers

Analytics

Edit video

0



Share



Thank you!



marco.minghini@ec.europa.eu



© European Union 2020

Unless otherwise noted the reuse of this presentation is authorised under the [CC BY 4.0](https://creativecommons.org/licenses/by/4.0/) license. For any use or reproduction of elements that are not owned by the EU, permission may need to be sought directly from the respective right holders.



Keep in touch



EU Science Hub: ec.europa.eu/jrc



@EU_ScienceHub



EU Science Hub – Joint Research Centre



EU Science, Research and Innovation



Eu Science Hub