



GOBIERNO
DE ESPAÑA

MINISTERIO
DE AGRICULTURA, PESCA
Y ALIMENTACIÓN

SECRETARÍA GENERAL
DE AGRICULTURA
Y ALIMENTACIÓN

FONDO ESPAÑOL
DE GARANTÍA AGRARIA O.A.



Generalitat de Catalunya
**Departament d'Agricultura,
Ramaderia, Pesca i Alimentació**

IACS DATA SHARING IN SPAIN PAYING AGENCY OF CATALONIA

63rd MIG-T Meeting 14th October 2020

Laura Ruana Pavon

IACS DATA SHARING IN CATALONIA

1. Background and Context in Catalonia
2. Agricultural Open Data available in Catalonia
3. LPIS
4. Declared crops map
5. Claim year declarations layer
6. Holdings Map
7. Examples of uses
8. Next Steps
9. Conclusions



1. BACKGROUND AND CONTEXT IN CATALONIA

- The Department of Agriculture has a large amount of geospatial data from the management of CAP. Providing data since 2005.
- Citizen requests.
- INSPIRE directive (2007), Spanish Law of transparency (2013), Catalan Law: **19/2014, on transparency, access to public information and good governance.**
- Active government policy in Open Data.
- Department of Foreign Action, Institutional Relations and **Transparency.**
- Department of Agriculture: EPSA 2019 - Best Practice Certificate “Spatial IACS Data Supply of Farms in Catalonia”.
- Regional open data portal: http://governobert.gencat.cat/ca/dades_obertes/ SOCRATA Technology.

2. AGRICULTURAL OPEN DATA AVAILABLE IN CATALONIA

IACS

NON-IACS

AGRI-FOOD
INDUSTRIES

INTERRELATED INFORMATION. NEED TO
PROPERLY IDENTIFY THE POSSIBLE
DATASETS AND ITS RESPONSABLES

HOLDINGS MAP
from GSAA

LIVESTOCK
FARMS

(including
Natura2000)

NATURAL AREAS

WMS: https://sig.gencat.cat/ows/ESPAIS_NATURALS/wms

WFS: https://sig.gencat.cat/ows/ESPAIS_NATURALS/wfs

AGRICULTURE

WMS: <http://sig.gencat.cat/ows/AGRICULTURA/wms>

WFS: <http://sig.gencat.cat/ows/AGRICULTURA/wfs>

IACS: Integrated Administration and Control System

LPIS: Land Parcel Identification System

GSAA: Geospatial Aid Application

2. AGRICULTURAL OPEN DATA AVAILIABLE IN CATALONIA

IACS



3. LPIS

2005 2012

<http://agricultura.gencat.cat/sigpac>



Spanish LPIS uses

VF	Vineyard – fruit trees
FL	Nuts – olive trees
FV	Nuts - vineyard
OF	Olive trees - fruit trees
VO	Vineyard - olive trees
CI	Citrus trees
FY	Fruit trees
FS	Nuts
IV	Greenhouses

DIFFICULT FIT WITH THE INSPIRE THEMES:
LAND COVERS VS LAND USE



TA	Arable land
VI	Vineyard
AG	Water land
IM	Unproductive
ED	Buildings
FO	Forest land
CA	Roads-paths

Metadata: https://analisi.transparenciacatalunya.cat/api/views/gtmq-t37t/files/342211f5-e53c-4e40-9b51-c625a05cefa0?download=true&filename=Dades_SIGPAC_2019.pdf

INSPIRE Metadata XML: <https://ide.cat/geonetwork/srv/cat/xml.metadata.get?id=1651287>

WMS: <http://sig.gencat.cat/ows/AGRICULTURA/wms>

WFS: <http://sig.gencat.cat/ows/AGRICULTURA/wfs>

Open data website: <https://analisi.transparenciacatalunya.cat/browse?q=sigpac&sortBy=relevance>

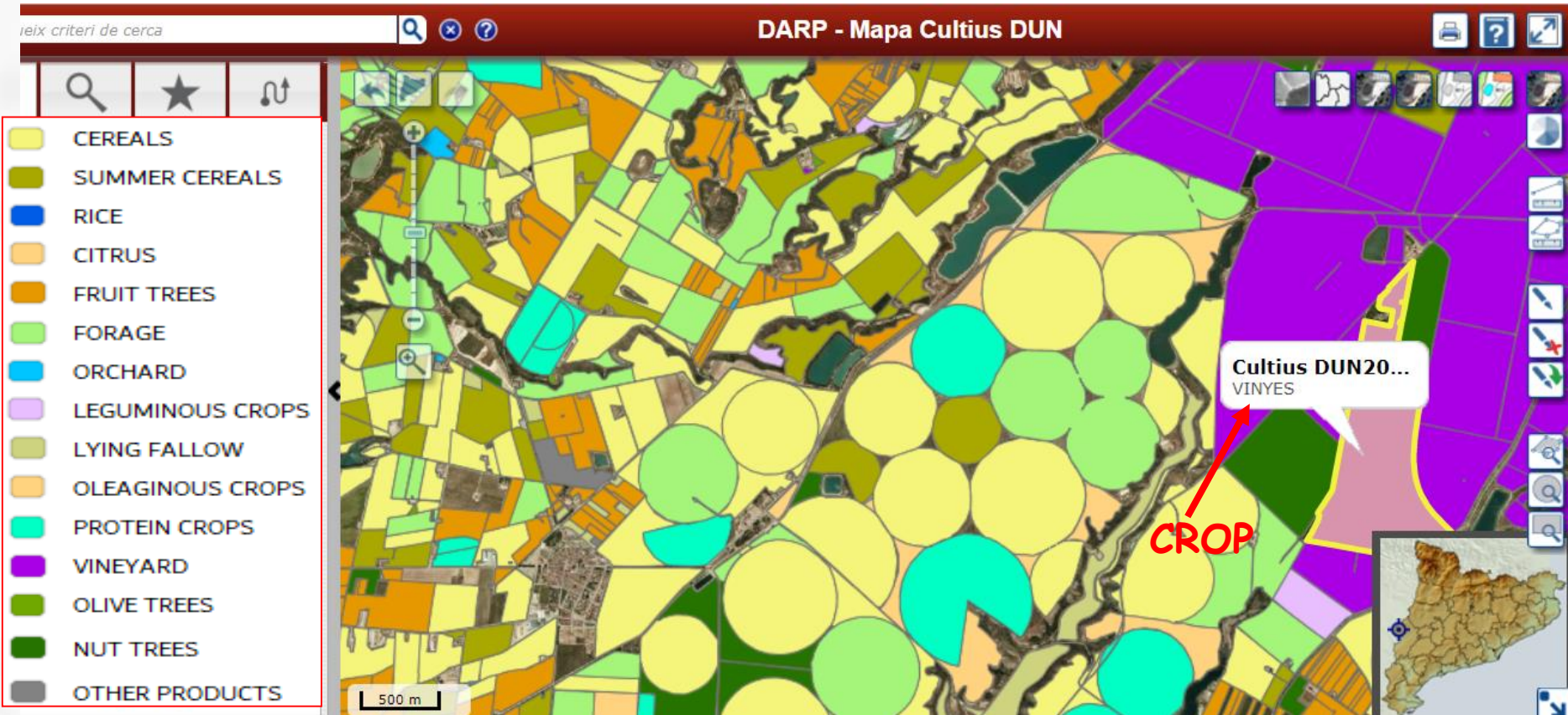
Download (by county). Last 3 claim years: SHP, CSV, XML, KMZ, GPKG, GEOJSON, RDF, RSS, KML

4. DECLARED CROPS MAP (GSAA)

2015

2015

VIEWER: http://sig.gencat.cat/visors/Cultius_DUN_SIGPAC.html



Metadata: http://agricultura.gencat.cat/web/.content/09-desenvolupament-rural/comu/dades_obertes/origen-dades-mapa-cultius.pdf

WMS: <http://sig.gencat.cat/ows/AGRICULTURA/wms>

WFS: <http://sig.gencat.cat/ows/AGRICULTURA/wfs>

Open data website: <https://analisi.transparenciacatalunya.cat/Medi-Rural-Pesca/Mapa-de-cultius-de-Catalunya-amb-origen-DUN/yh94-j2n9>

Download: SHP, CSV, XML, RDF, RSS, TSV

5. CLAIM YEAR DECLARATIONS LAYER



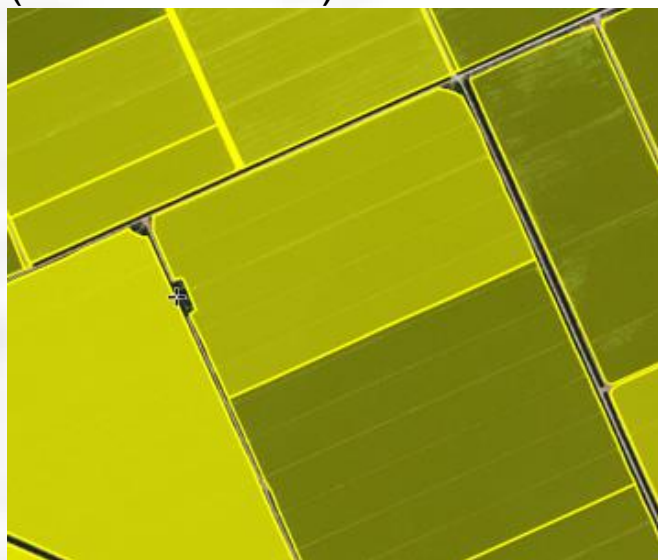
2015

VIEWER: <http://aplicacions.agricultura.gencat.cat/sigpac2/visor/>

Main goal: prevention of overlaps

- Incorporated in the regional LPIS viewer. Currently, claim year 2019 and 2020 declaration layers available:

- Yellow: 2020 single application (until 30th June)



Consultable data:

- collaborative organization
- reference parcel
- declared area
- declared crop

- Green: 2020 declared areas
- Red: 2019 declared areas



Video in YouTube *Capa DUN al Visor SIGPAC:*
<https://www.youtube.com/watch?v=gjXiOsFTrTU>



6.HOLDINGS MAP



What data does it provides?

- Graphic information of the delimitation of each holding
- Data regarding the gender and age of the farmer
- CAP aids applied
- Adherence to Proximity Sales System
- Location data and total holding area
- Producer Organization membership
- Adherence to Quality programs
- Technical-economic orientation of the holding

Pseudonymised data through a unique identifier (ID_EXP) for all campaigns.



Metadata: https://analisi.transparenciacatalunya.cat/api/views/iqpi-zasj/files/cdd8d780-6725-4acb-91b8-251914e26096?download=true&filename=DADES%20EXPLOTACIONES_2019.pdf

Open data website: <https://analisi.transparenciacatalunya.cat/Medi-Rural-Pesca/Mapa-d-explotacions-agr-coles-de-Catalunya/iqpi-zasj>

Download: SHP, CSV, XML, GPKG, RDF, RSS, GEOJSON

7. EXAMPLES OF USES

Investigation: JRC

Observation of phenomena

Farm management

agri cultura Agricultura @agric... · 13 mar. 19

Vols saber a quines zones estan florint els arbres fruiters? Busca-ho a través del **mapa de cultius**. Una eina que et permet saber quins **cultius** hi ha plantats a **#Catalunya**

▶ Si utilitzes el mòbil, et pots geoposicionar

👉 bit.ly/2RTY3oq @opendatacat #DadesObertes



incavi

INCAVI @incavicat · 20 mar. 19

🌱 Benvinguda primavera! Ara és quan el cep comença a mostrar els primers signes de creixement. Apareixen els borrons i, de cada un d'ells, creixerà un sarment amb diverses fulles. Dia a dia, la vinya s'anirà omplint de verd.

#vicatalà
#elcicledelavinya
#primavera
#primavera2019



cultilogic_cat @cultilogic_cat

En resposta a @cfolch, @agriculturacat y 11 más

Nosaltres tenim integrat a **@Cultilogic_cat** el Sigpac, explotacions ramaderes i mapa de cultius. Utilitzem les dades per proporcionar al usuari un servei integrat de gestió. Ja sigui un productor, empresa de treballs per tercers o un tècnic.

Crops evolution

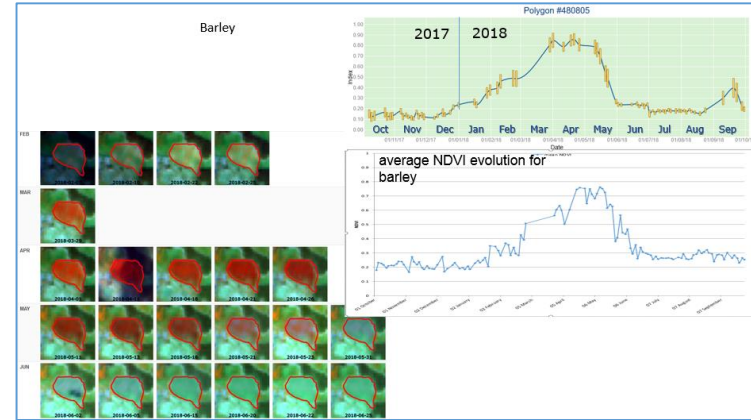
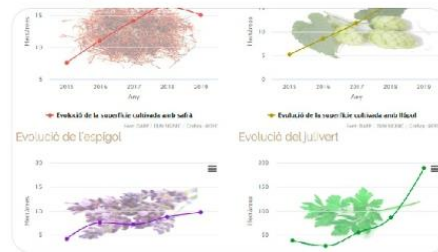


Observatori Forestal Català ... · 6d

En resposta a @cfolch, @CETAF_Cat y 11 más

Hola @cfolch, des de l'Observatori Forestal català, el mapa de cultius el fem servir per mostrar l'evolució del cultiu de Plantes Aromàtiques i Medicinals.

observatoriforestal.cat/cultiu-plantas...



Studies



Ignasi Servià @iservia · 6d

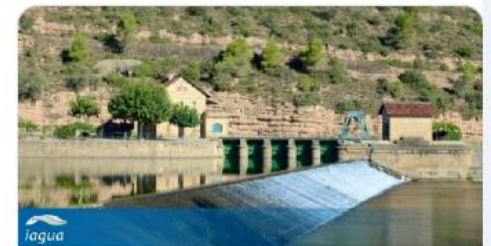
En resposta a @cfolch, @agriculturacat y 10 más

Jo he fet un parell de posts al meu blog **@iagua** parlant sobre la modernització del **@Canals_Urgell** a partir de les dades.

Mapa de Cultius.

iagua.es/blogs/ignasi-s...

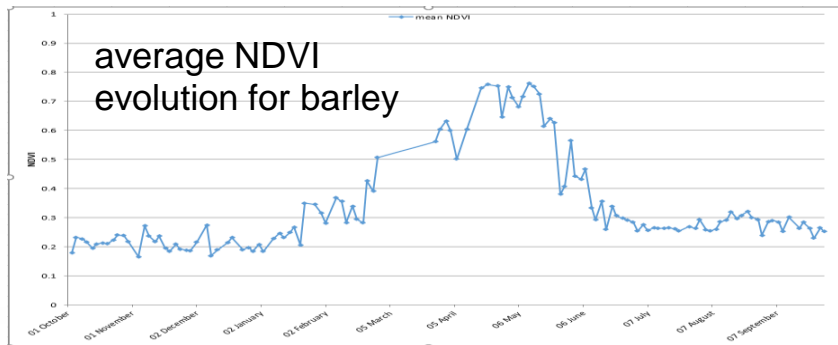
Mapa d'Explotacions.



Las explotaciones del Canal d'Urgell
iagua.es

8. NEXT STEPS

- Publication of the original GSAA (geometries + alphanumerical data). Large amount of information: year and frame planting, varieties, etc.
- NDVI average graphic for each declared crop.



- Publication of the 2020 Crops map data in **English**.
- Publication of the 2020 Crops map in **GPKG** format.

9. CONCLUSIONS

Who is using the data?

- Public administrations.
- Science: JRC, Universities.
- Business: Agroptima, Cultilogic, Onesoil, consultancies.
- Citizens.

Which is the cost to publish/share the data?

Affordable workload. It allow access to data to other actors different from IACS users.

State of INSPIRE

- XML metadata LPIS
<https://ide.cat/geonetwork/srv/cat/xml.metadata.get?id=1651287>
- Visualization service: Agricultural and Aquaculture sites and holdings
http://geoserveis.ide.cat/idec_inspire_af/wms/service
- Working on downloadable data: ATOM and GML

Contact points:

PA → **ICGC** → **IDEC**

PA: Paying Agency

ICGC: Cartographic and Geographical Institute of Catalonia

IDEC: Spatial data infrastructure of Catalonia <https://www.ide.cat/>

IACS DATA SHARING IN SPAIN

STATE OF PLAY

- LPIS download (including Ecological Focus Features layer): late 2020
- GSAA download: first semester 2021
- Visualization layer in national SIGPAC of geotagged photos: second semester 2021



CHANGE OF REGULATION

Working to include in the national Regulation of direct payments the possibility of publication of the data by the administration.



Generalitat de Catalunya
**Departament d'Agricultura,
Ramaderia, Pesca i Alimentació**



Thank you for your attention!