

# **ELISE**

## **European Location Interoperability Solutions for E-Government**

### **Location Interoperability Framework Observatory (LIFO)**

**Ray Boguslawski, JRC, External Consultant**

MIG-T meeting  
14 October 2020



# ELISE supports innovation through location interoperability

EULF BLUEPRINT  
Location interoperability  
guidance framework



FRAMEWORK

STUDIES



KEY TOPICS IN  
LOCATION ENABLED  
DIGITAL  
TRANSFORMATION



SURVEYS

LOCATION  
INTEROPERABILITY  
FRAMEWORK  
OBSERVATORY  
European state of play  
based on Blueprint

SOLUTIONS



PILOTS, EVALUATIONS, PRODUCTS  
Energy / Transport use cases  
EU Gazetteer, Registry



SKILLS

TRAINING & WEBINARS

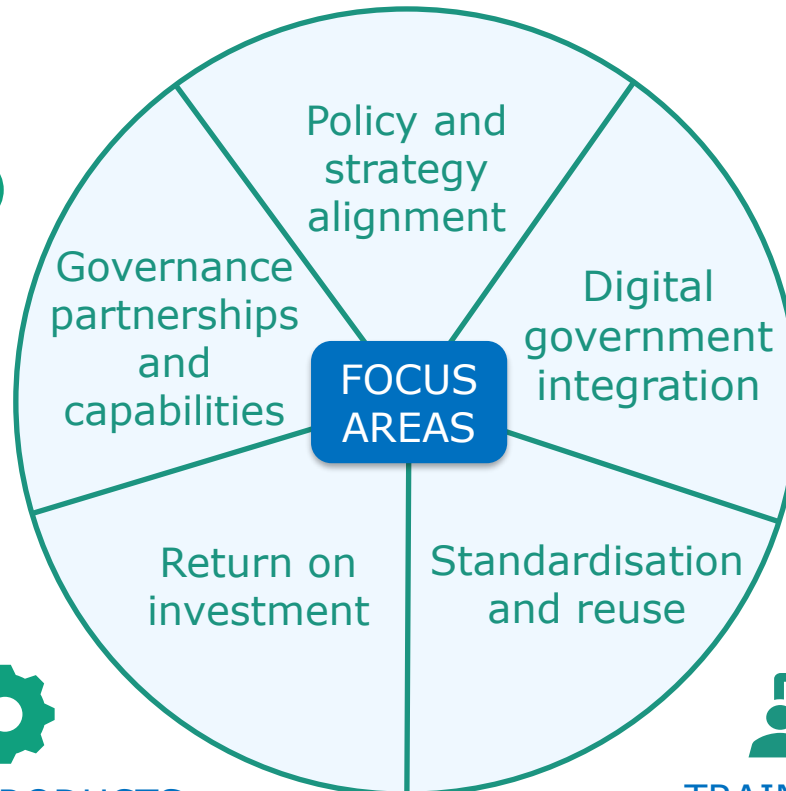
# ELISE supports innovation through location interoperability

EULF BLUEPRINT  
Location interoperability  
guidance framework



FRAMEWORK

STUDIES   
KEY TOPICS IN  
LOCATION ENABLED  
DIGITAL  
TRANSFORMATION



SURVEYS

LOCATION  
INTEROPERABILITY  
FRAMEWORK  
OBSERVATORY  
European state of play  
based on Blueprint

SOLUTIONS 

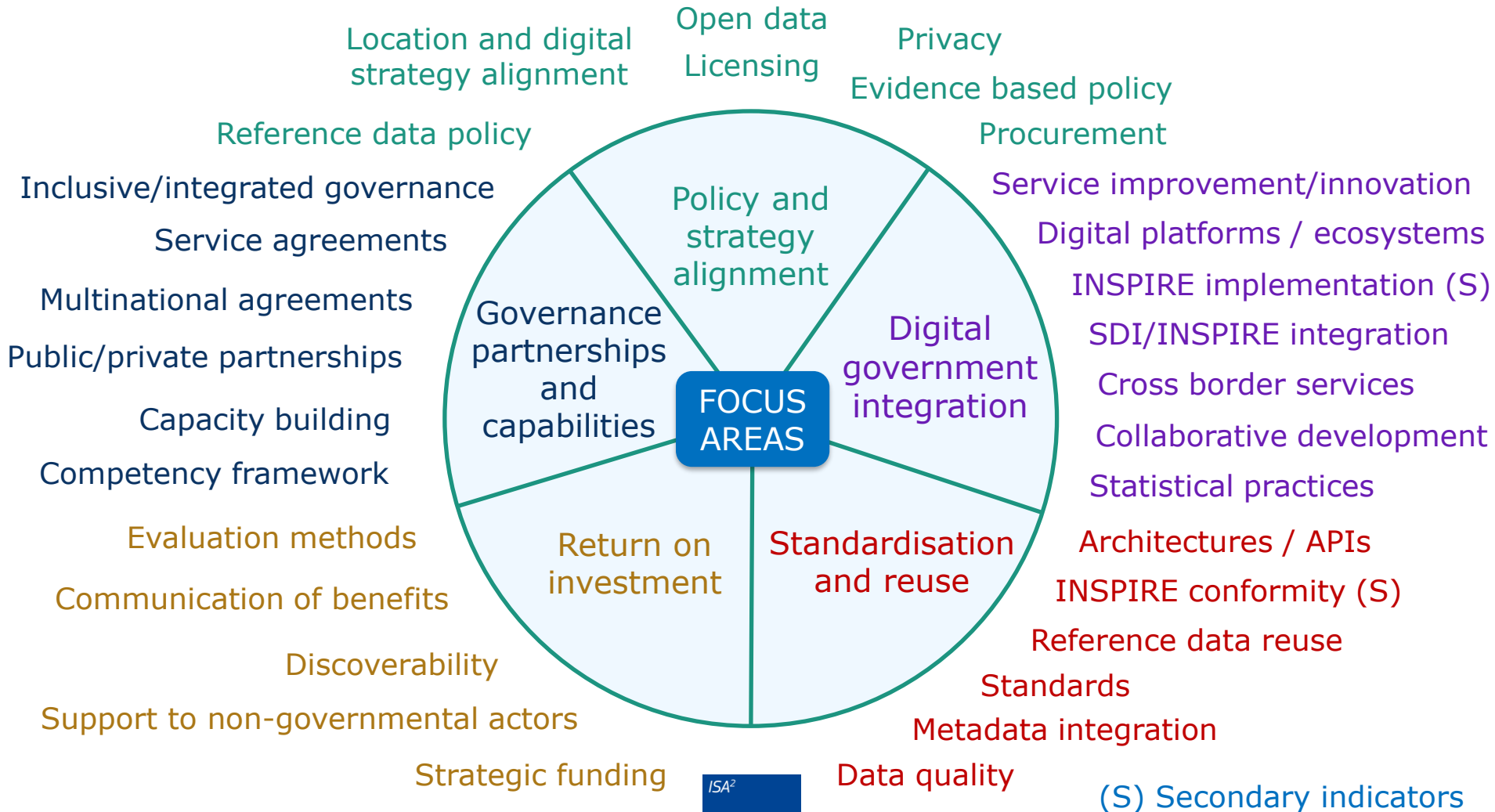
PILOTS, EVALUATIONS, PRODUCTS  
Energy / Transport use cases  
EU Gazetteer, Registry



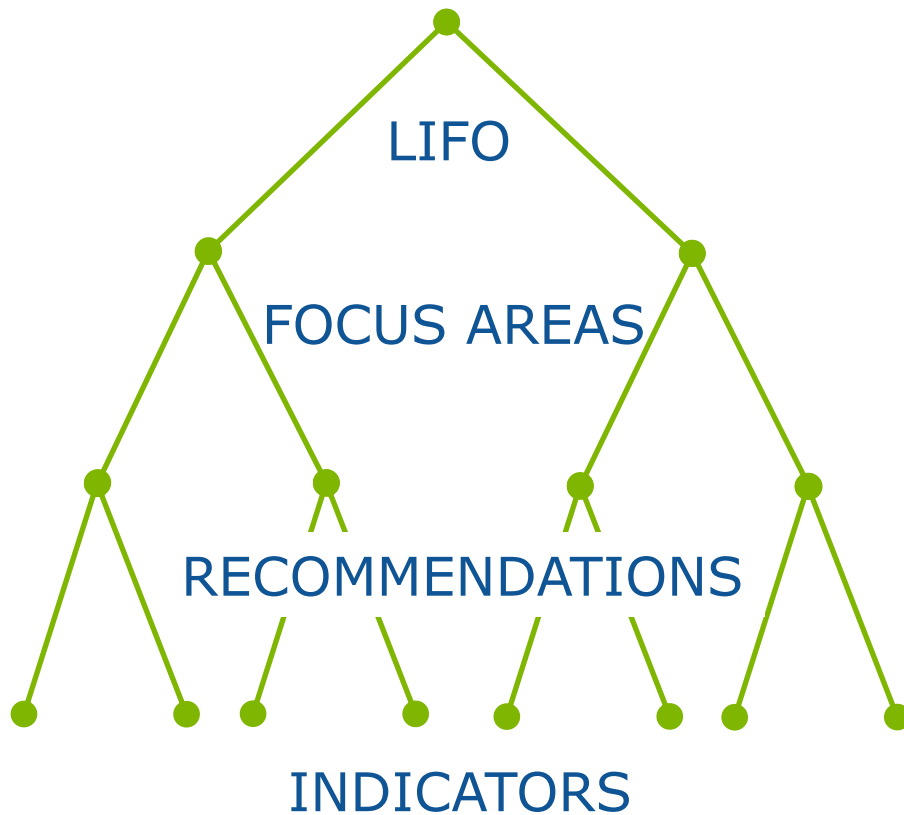
SKILLS

TRAINING & WEBINARS

# LIFO indicators – balanced scorecard for a user-driven SDI



## LIFO scoring hierarchy



Score Type	No	Scoring method
LIFO	1	Average of scores for all focus areas
Focus area	5	Average of scores for all recommendations associated with a focus area
Recommendation	19	Average of normalised scores for all indicators associated with a recommendation
Indicator	48	Discrete scores using different scoring methods converted to standard normalised scores in range 0-1.

## LIFO 2019 “Wave 1”



10 countries participated



EU survey used for  
data collection



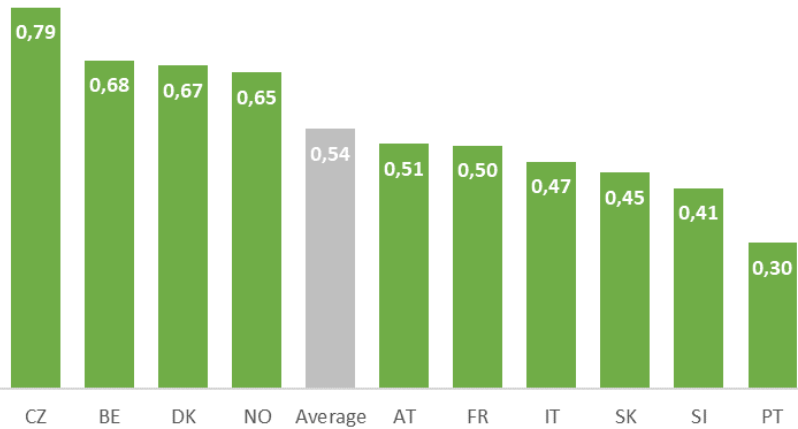
Country factsheets and  
European state of play  
published



Best practices added to  
EULF Blueprint



# LIFO 2019: LIFO index scores



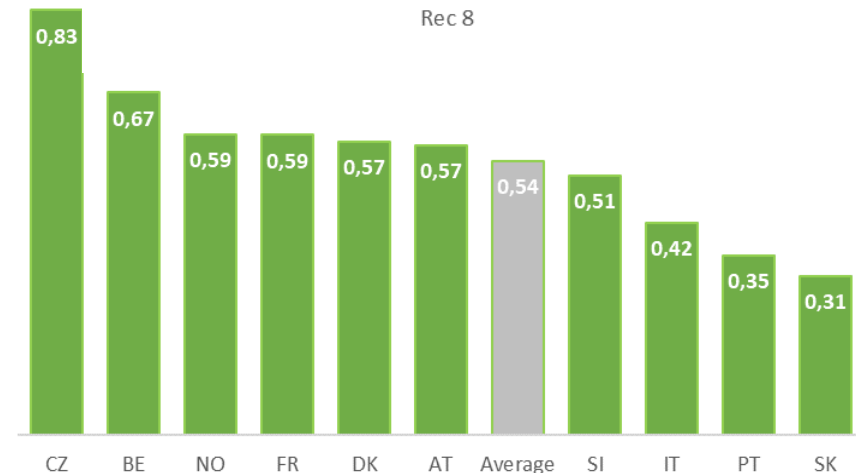
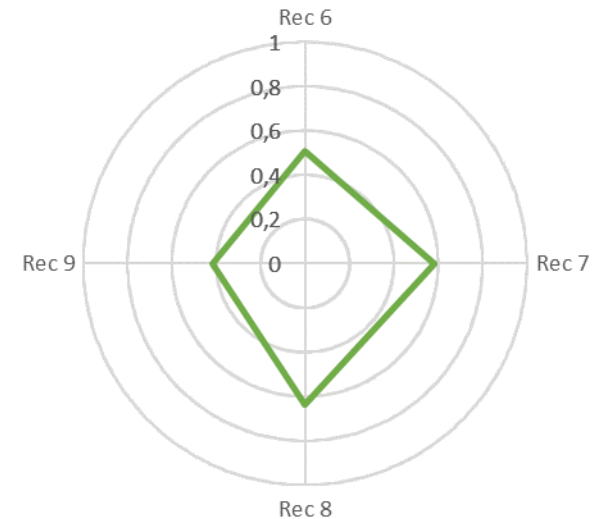
- LIFO Index equal to or above 0,5
- LIFO Index below 0,5

## LIFO 2019 Focus Area indexes: Digital government integration

Extensive use made of location data and solutions but, in general, without a real breakthrough approach.

Main highlights:

- INSPIRE as reference framework for cross-border harmonisation of location data and services but not for delivery of cross-sector public services (*Rec. 7*)
- open and collaborative methodologies not extensively used for the design and improvement of location-enabled digital public services; more collaborative approaches adopted for delivery of services, with quite an active involvement of the private sector (*Rec. 8*)
- only in few countries, location data used to develop innovative models of digital public services (*Rec. 6*)
- a limited number of actions undertaken to fully exploit the integration of location and statistical information in producing location-based statistics (*Rec. 9*)
- *Some interesting best practices captured for inclusion in EULF Blueprint v4*





## LIFO 2020 "Wave 2"



19 countries already confirmed



Data collection launched  
11 Dec Survey deadline

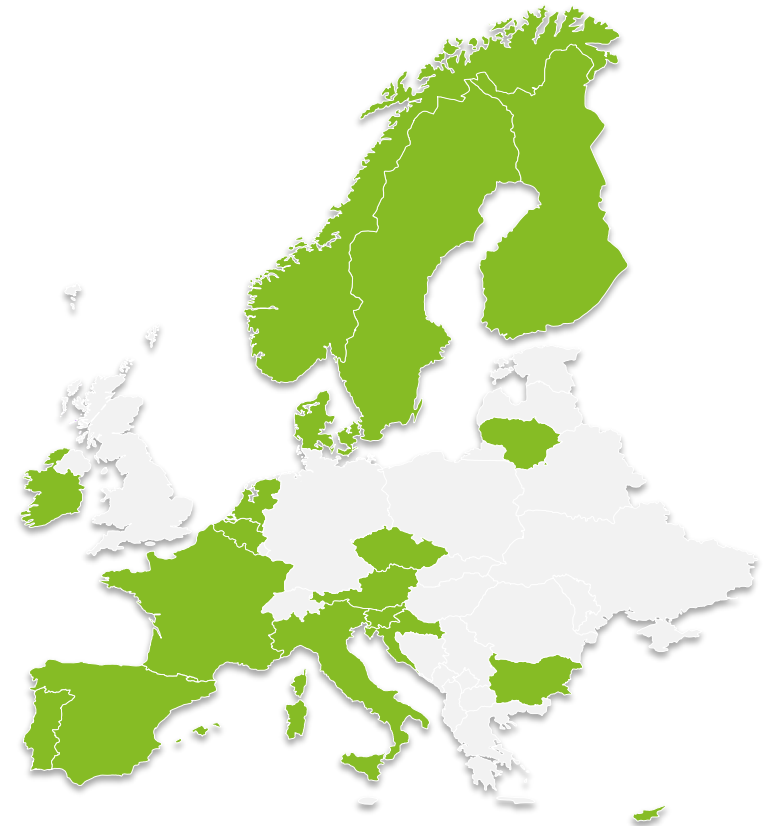
Dec-Jan:  
Factsheet validation



Mar-May outreach:  
ISA2 conference  
INSPIRE conference



Jun outputs published:  
Country factsheets  
State of play report  
Updated Blueprint



To join LIFO 2020 email:  
[francesco.pignatelli@ec.europa.eu](mailto:francesco.pignatelli@ec.europa.eu)

# Want to know more?

## ELISE

European Location Interoperability Solutions  
for e-Government

Get started: [ELISE Action page](#)

Location framework: [EULF Blueprint](#)

Location observatory: [LIFO](#)

Join and collaborate: [ELISE Community](#)

Stay tuned: [@EULocation](#)



<http://inspire.ec.europa.eu/>

The ELISE action is undertaken with the support of [ISA<sup>2</sup>](#).

ISA<sup>2</sup> is a EUR 131 million programme of the European Commission which develops digital solutions that enable interoperable cross-border and cross-sector public services for the benefit of public administrations, businesses and citizens across the EU.

ISA<sup>2</sup> supports a large range of [actions](#) and [solutions](#). The ISA<sup>2</sup> solutions can be used free of charge and are open source when related to IT.

[ISA<sup>2</sup>](#) - IT solutions for less bureaucracy  You click, we link. Follow us on [twitter](#).

<http://ec.europa.eu/isa>, [ISA@ec.europa.eu](mailto:ISA@ec.europa.eu)

ISA<sup>2</sup>

