



ETF and INSPIRE Reference Validator

JRC INSPIRE Team



74th MIG-T meeting – April 28, 2023

INSPIRE Reference Validator – Releases

Annual releases

As mentioned above, several releases of the INSPIRE Reference Validator are scheduled each year with the main goal of concentrating breaking changes in the first half of the year in order to produce the major release used for the end-of-year Monitoring process already in June. The scheduled annual releases are described in detail in the next sub-sections. In addition to the different infrastructure and deployment environments, the different releases are managed using different branches of the [ets-repository](#) repository.

For simplicity, the descriptions make explicit reference to releases in the years 2023/2024, but the same release schedule will be applied consistently over the following years:

latest release

- v2023.1 - 15/03/2023: it includes both breaking and non-breaking changes.
- v2023.2 - 15/06/2023: it includes both breaking and non-breaking changes.
- v2024.b - 15/06/2023: it includes both breaking and non-breaking changes which are planned to become effective (for Monitoring purposes) in the following year. **version used for Monitoring and Reporting 2023**
- v2023.3 - 15/09/2023: it only includes non-breaking changes, so that any INSPIRE resource passing the test in the previous release automatically passes the same test in this release. This release is the one used for the end-of-year Monitoring process.
- v2024.0 - 15/01/2024: it includes both breaking and non-breaking changes, including those available in the beta instance of the previous year.

INSPIRE Reference Validator – v.2023.1

v2023.1 - 16/03/2023

Latest



The version published at this time contains breaking and non-breaking changes.

Bugfixes

- [#141](#) md sds 3.6 Coupled Resource manual check added - [#806](#)
- [#849](#) tn-as.c.1 geometry manual check added - [#802](#)
- [#898](#) bu-as.a.11 currentUse valid_href path fixed - [#803](#)
- [#927](#) Citation Date also allows gco:DateTime - [#804](#)
- [#930](#) new features paths added in inspire and inspire-noggeo - [#805](#)
- [#545](#) Permanent Test run failure of ETF-based Tests in the GDI-DE Testsuite due to „SSL read failed“ from inspire.ec.europa.eu - Included [inspire-registry-resources.zip](#) file in the release

Deployment instructions

The section containing the deployment process using Docker image and troubleshooting section. You can also find these in the [training material](#)

```
docker login docker.pkg.github.com
#Provide Github credentials
docker run --name inspire-validator -d -p 8090:8090 -v ~/etf:/etf docker.pkg.github.com/inspire-mif/helpdesk-validator
#Launches a container with the image, exposing the UI in port 8090 through the same port in the host machine, and u:
```

<https://github.com/INSPIRE-MIF/helpdesk-validator/releases/tag/v2023.1>

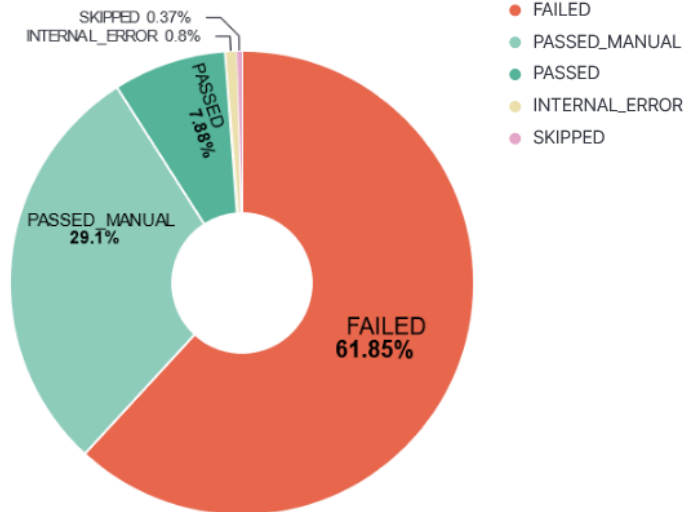
INSPIRE Reference Validator – Dashboard

Total number of tests

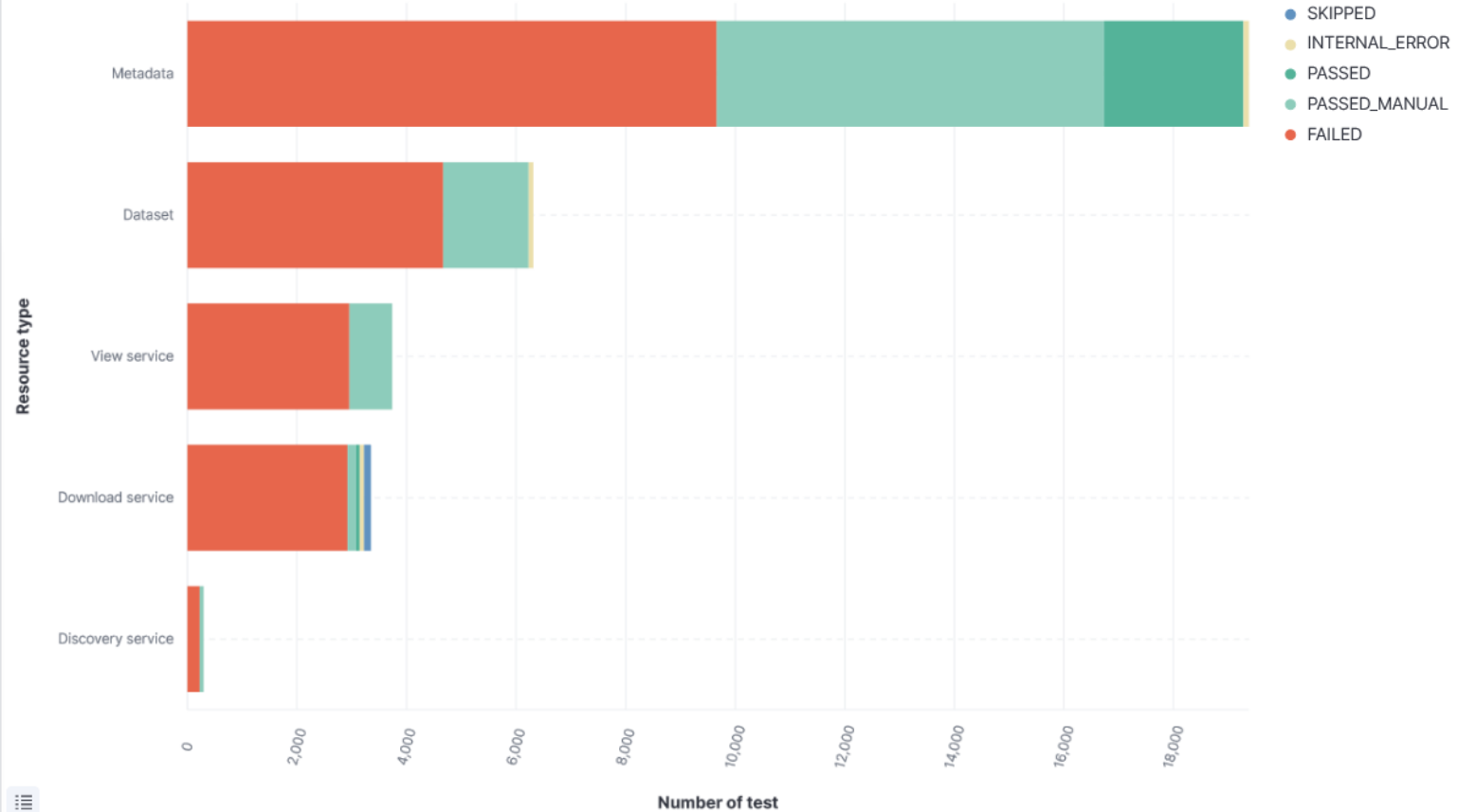
Number of tests

33,287.00

Fractions of overall test outcomes

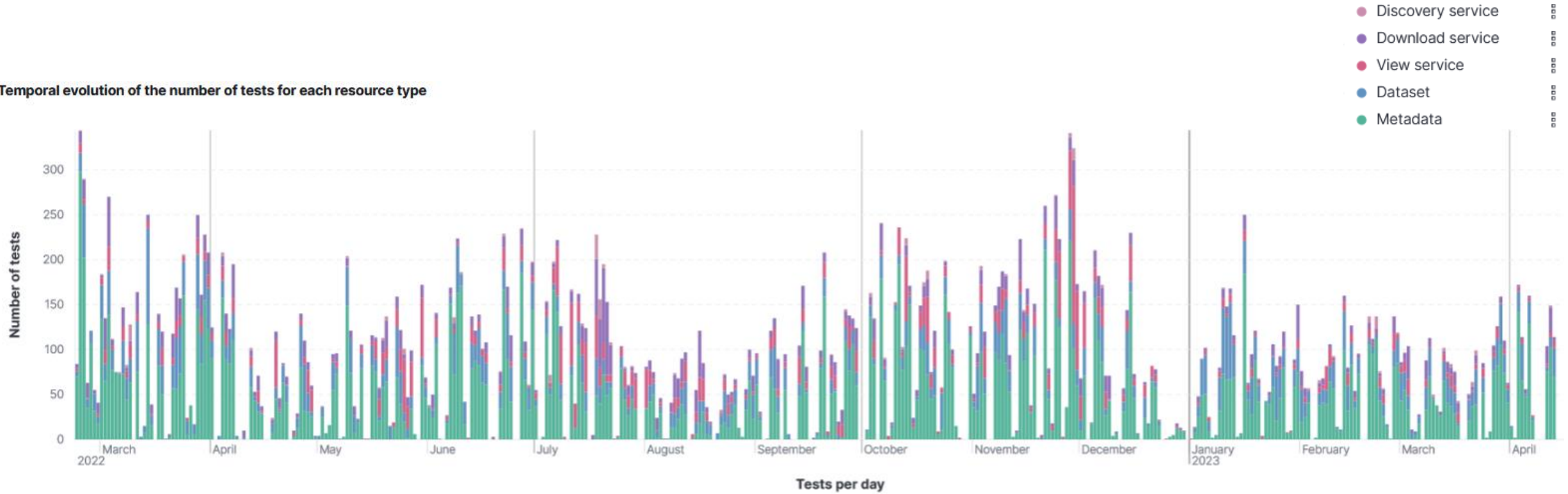


Number of tests per resource type



INSPIRE Reference Validator – Dashboard

Temporal evolution of the number of tests for each resource type



INSPIRE Reference Validator – Future plan

2.1.0

Latest

github-actions released this 19 Aug 2022 2.1.0 bfe31

The installation instructions and the user manual can be found [here](#).

Changelog

Bugfixes

- #191, #162 fix(Web Interface): cancel buttons and back urls in dialogues
- #192 fix(Web Interface): open log in new tab
- #190 fix(Web Interface): hide password in Test configuration dialogue
- #185 fix(bda): Windows build issues due to encoding
- [etf-validator/governance#96](#) Ring orientation fix with new deegree release in GmlGeoX (fixed in the legacy test driver)
- [etf-validator/governance#102](#) (fixed in the legacy test driver)
- #223 fix(tetd) change in Team Engine API
- #219 fix(bsxds) Functx download fails

<https://github.com/etf-validator/etf-webapp/releases/tag/2.1.0>

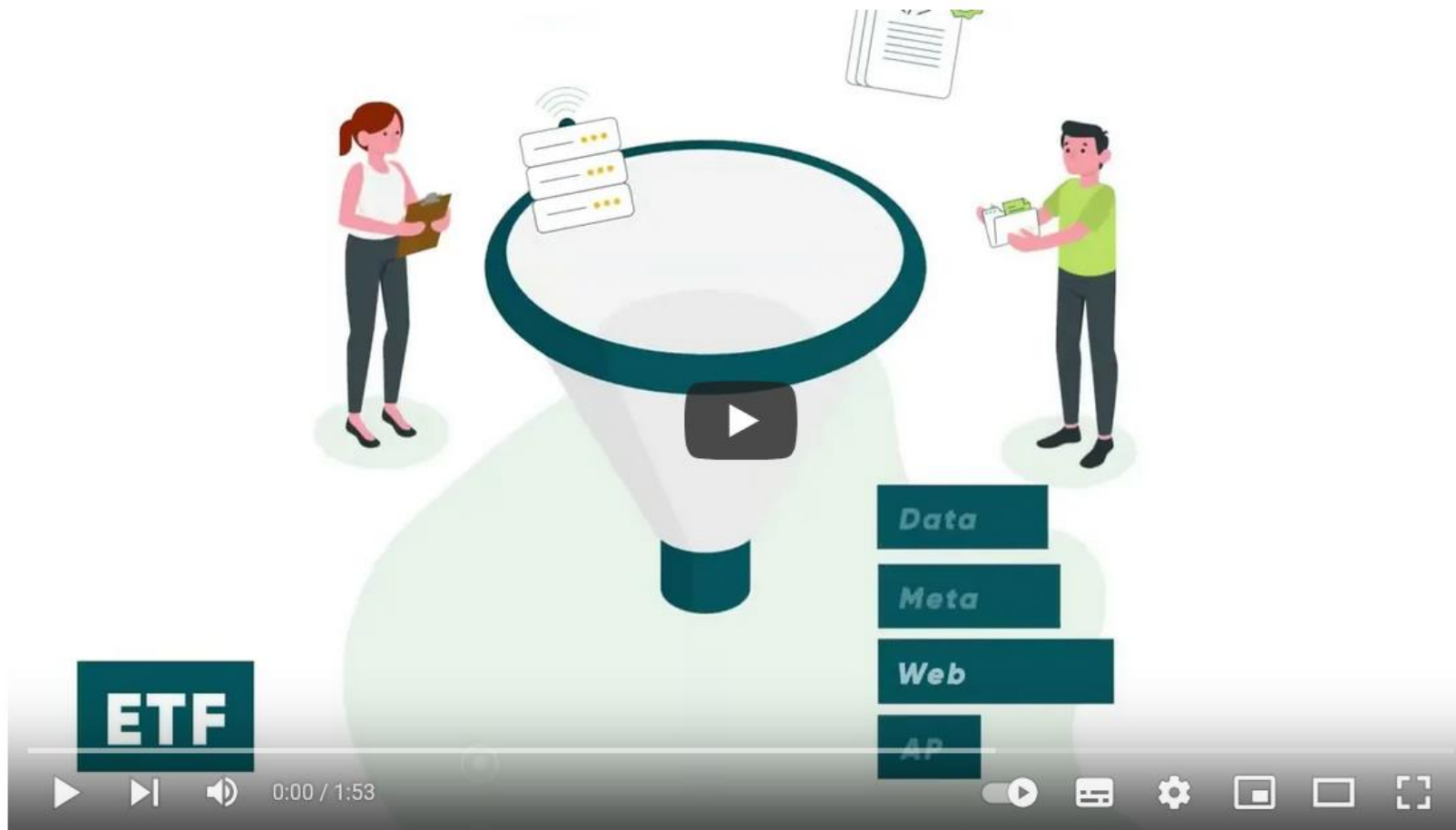
- Release based on ETF v.2.1 – including two main changes:
 - fix in the **validation of geometry orientation** in GML datasets
 - **end of support for WMS 1.1.1** for security reasons
- Beta instance available for testing at <http://beta-inspire-validator.eu-west-1.elasticbeanstalk.com/etf-webapp/test-reports/index.html>

Reminder on the Validator usage & offer

- The production instance of the INSPIRE Reference Validator is **not meant** to be used for massive/large validations, which may result into software unavailability for the whole community:
 - ‘heavy’ services serving several and/or large datasets
 - large GML datasets – current **limit for file upload**: 50 MB
 - massive validations through the API – limited through an **API Gateway**
- For such validation needs:
 - please **setup your own instance of the INSPIRE Reference Validator** (e.g. using Docker)
 - ask for we offer **help with the deployment**

ETF – New promotional video

https://youtu.be/AvFUa_uEHfs



ETF - an open source validation framework



Inspire EU
831 subscribers

Analytics

Edit video

0



Share



Thank you!



marco.minghini@ec.europa.eu



© European Union 2020

Unless otherwise noted the reuse of this presentation is authorised under the [CC BY 4.0](https://creativecommons.org/licenses/by/4.0/) license. For any use or reproduction of elements that are not owned by the EU, permission may need to be sought directly from the respective right holders.



Keep in touch



EU Science Hub: ec.europa.eu/jrc



@EU_ScienceHub



EU Science Hub – Joint Research Centre



EU Science, Research and Innovation



Eu Science Hub