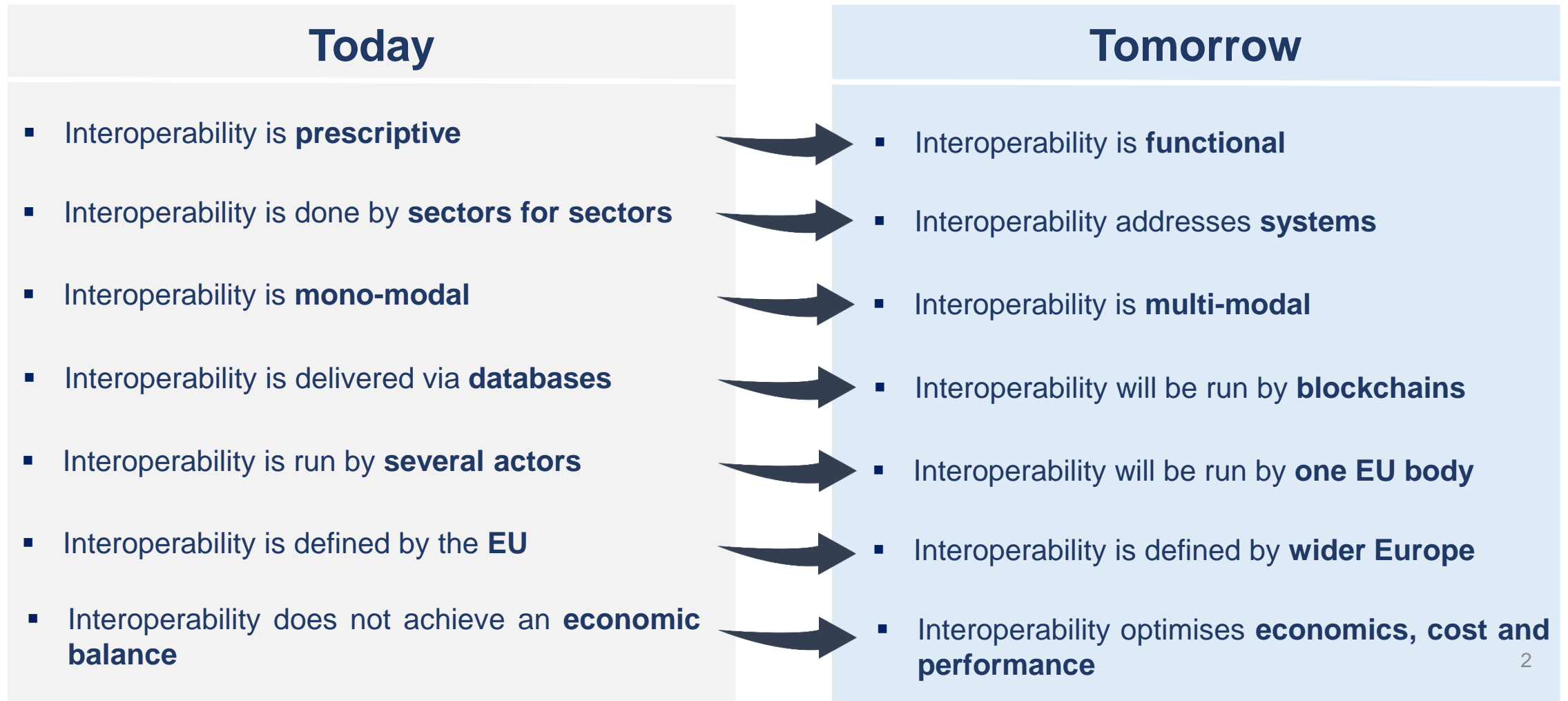


Strategic Discussion II: **Interoperability** - possibilities & limitations

Presentation of rail infrastructure managers to the PRIME plenary meeting
Monika Heimig, EIM
16th November 2017
Brussels, Belgium

II. How does Interoperability evolve ?



Illa. What are the main issues with interoperability ?



Complexity

- Prescriptive TSIs
- Long life-cycle of TSIs
- Slow process (5 years)



Automation

- New technology (IoT, robotics, etc.)
- No interoperability
- No interfaces



EU vs non-EU

- New standards (Obor, etc.)
- Unclear interfaces
- Competition



Transport

- Mono-modal TSIs
- No interfaces
- Costs, time, fragmentation



Assessment

- Ex-post evaluation
- Long review periods
- Economic aspects



Budget

- Limited budget resources
- High costs due to complexity
- Budget EU vs non-EU

IIIb. Case study: ERTMS



Complexity

- 'Old' standard
- Fragmentation IMs vs RUs
- Slow process (20 years)



Automation

- Adaptability to new technology ?
- Interfaces secured ?
- ERTMS is underlying layer for ATO



EU vs non-EU

- New standard ? (non-EU ERTMS)
- Future competition ?



Transport

- ERTMS one amongst other systems
- No interfaces
- Costs, time, fragmentation



Assessment

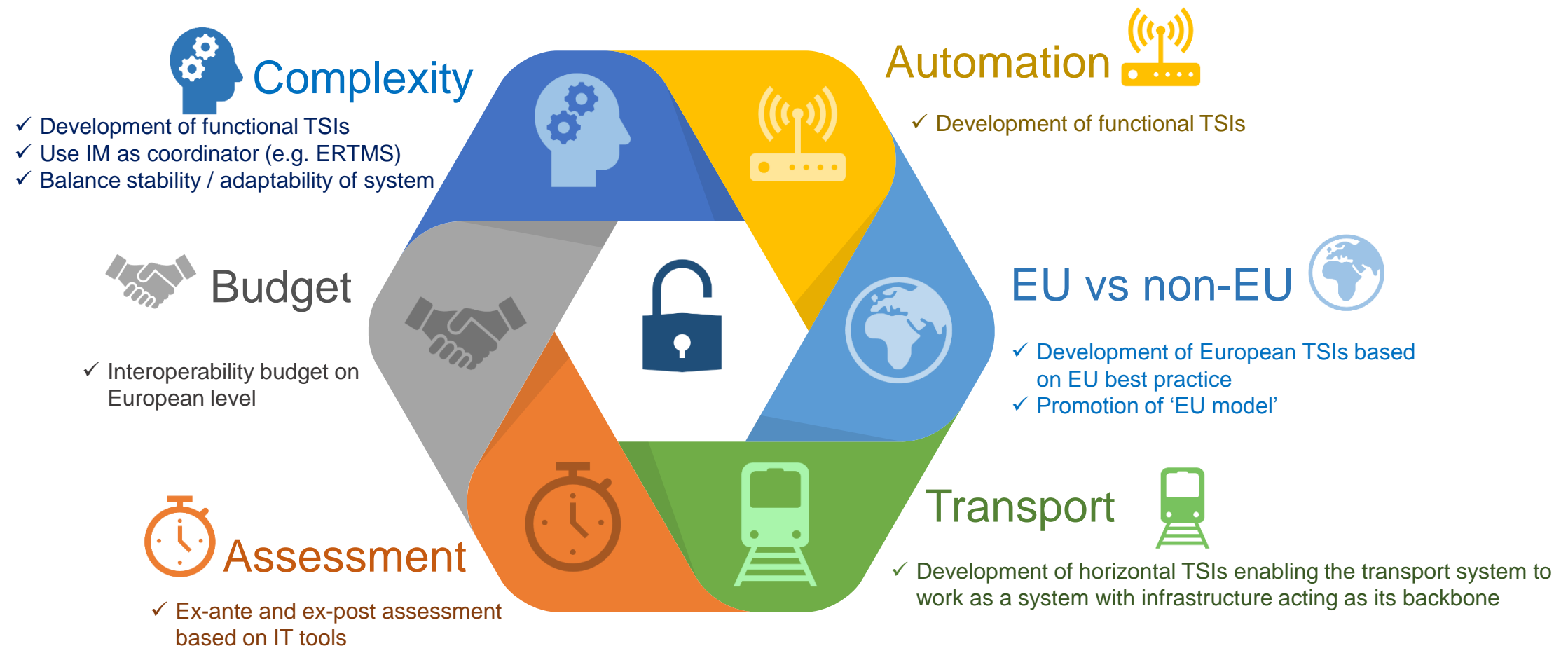
- Ex-post evaluation
- Long review periods
- Economic aspects



Budget

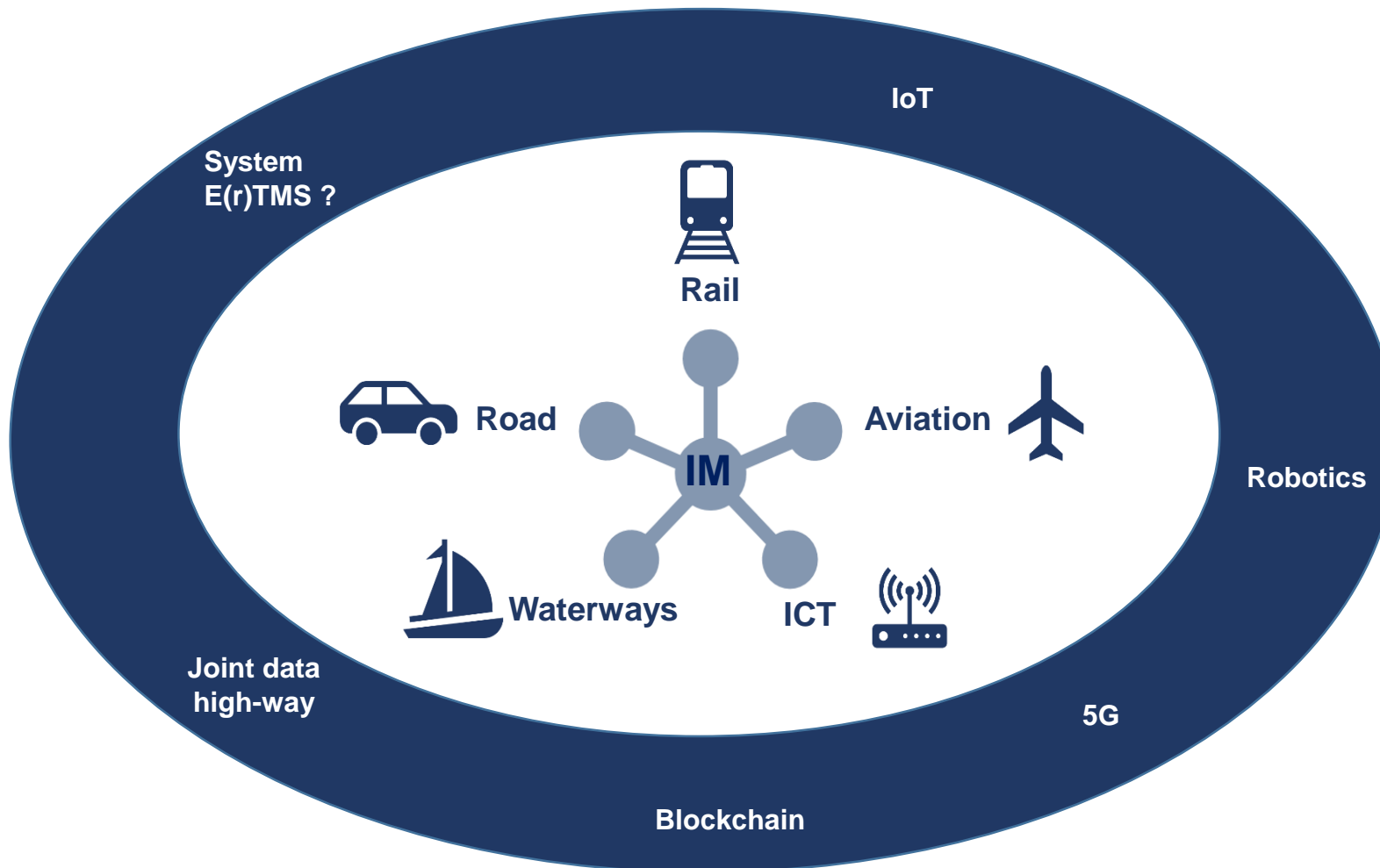
- Limited budget resources
- High costs due to complexity
- Budget EU vs non-EU

IV. How can the issues be solved ?



VI. Which target system should we prepare for ?

One multi-modal system with infrastructure as its backbone



Your thoughts ?

