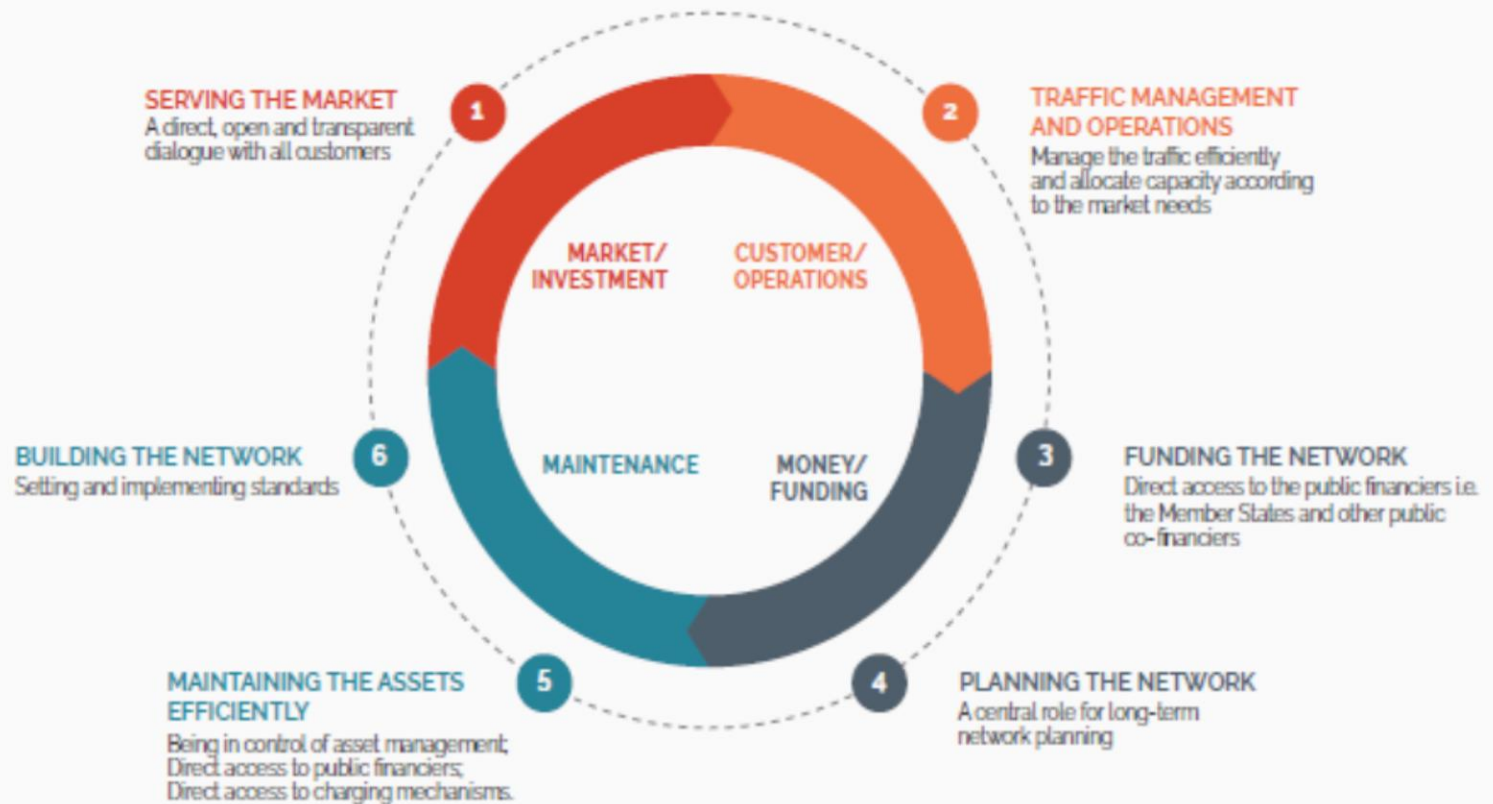


# « Trends & Priorities for 2019-2024 »

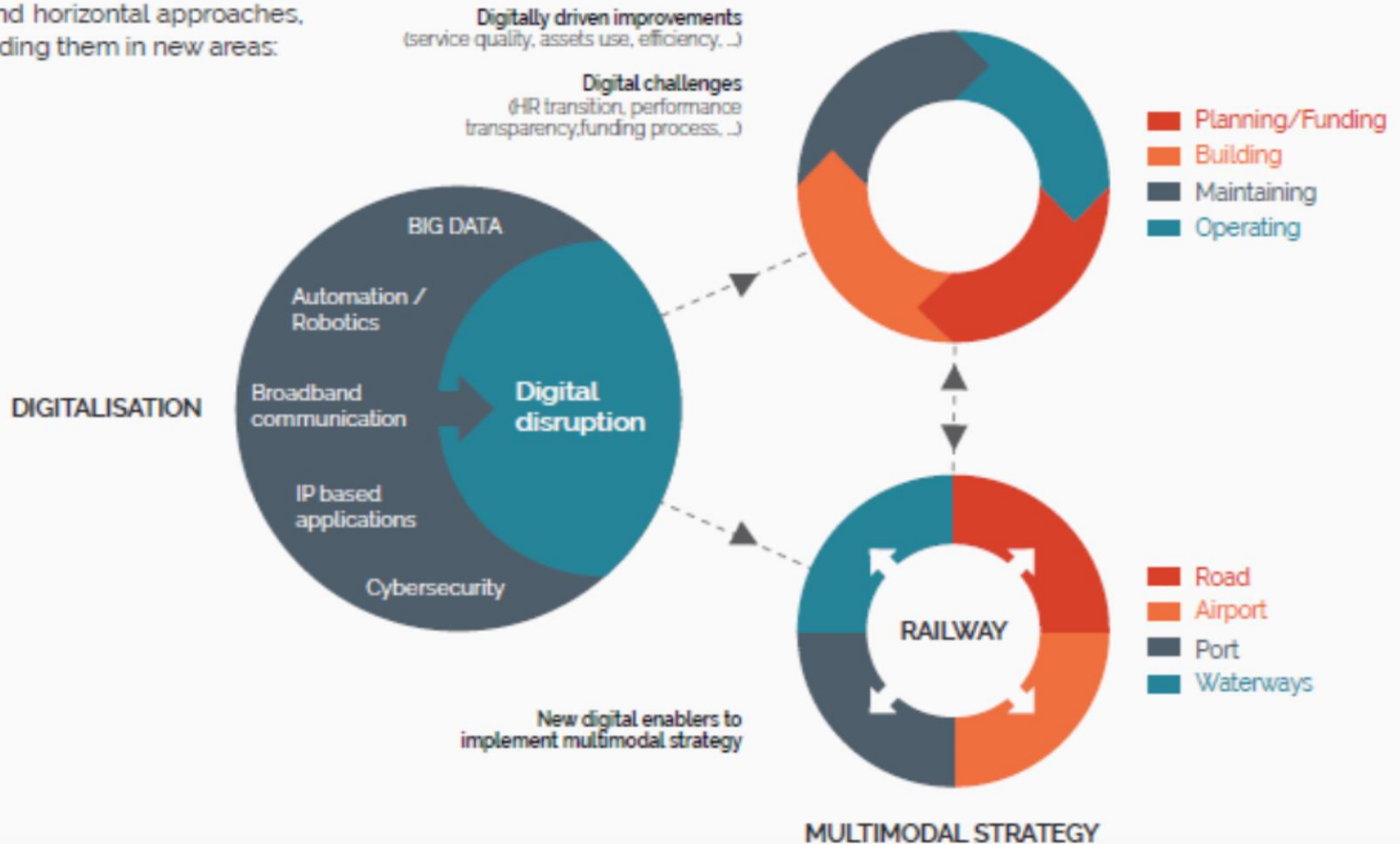
Presentation to the PRIME Plenary Meeting  
Agenda point 6) “Priorities for the 2019-2024 Commission – Presentation of EIM”  
Author: Monika Heiming  
Thursday, 13<sup>th</sup> June 2019  
Bern (CH)

# The business model of rail infrastructure managers



# The evolution of rail infrastructure managers

EIM supports its members through vertical and horizontal approaches, whilst guiding them in new areas:



# Main trends relevant for the IMs

The 5 main trends below have the highest impact on the Single European Railway Area



Multimodal Transport



IM  
becomes the  
Mobility manager



Green Transport



IM  
facilitates green  
mobility



Connected Transport



IM provides  
seamless  
connectivity



Innovative Transport



IM becomes  
smart and  
automised



Military Mobility



IM prepares  
for dual use on  
its network

# Main expectations from the EU

**Political framework** reflecting the strategic role of the rail infrastructure manager



- Connectivity between modes
- Interfacing between IMs
- Multimodal layers and services

**Increased EU funding** (CEF, other)



- Deployment of TEN-T and RFCs
- Deployment of ERTMS
- More capacity, performance, sustainability

**Innovation programme** favouring the development of the rail infrastructure manager (e.g. Horizon Europe)



- Smart rail infrastructure
- Shift to digitalisation and robotisation
- Quicker innovation cycles

# Outlook

## Innovation made by PRIME

© Prime plenary meeting, 13th June 2019 in Bern (CH)

The next  
generation IM