

PRIME
Warsaw 3rd June 2015
Feedback from
HLIM Cultural Change working group

Lynn Chamberlain-Clark

Network Rail

Working group overview

Item 5: Background note HLIM safety working group to date

Following the session held during the HLIM in Sweden in June 2014, Network Rail offered to lead a working group on Safety Culture.

The purpose of the working group was:

1. To understand the approaches to developing safety maturity across Europe
2. To establish a cultural baseline for the European rail industry
3. To share best practise/skills and knowledge on safety culture development
4. To work together to have a consistent approach to supporting a safe railway culture in Europe including how we can measure the culture/behavioural change
5. To agree what we are aiming for a the railway safety culture across Europe



The HLIM have met three times in the last 9 months London – September 2014; Madrid – January 2015; Brussels– May 2015, and provided report backs to PRIME meetings during the year. The group have agreed to next meet in September 2015

Attendees:

ERA; RSSB; ORR; Network Rail; [ProRail](#); Latvian Railways; [Trafikverket](#); EIM Rail, HS1, RFI, Infrabel, PLK, Refer, EIM Rail, [Trenitalia](#) SNCF, TUC Rail, [Adif](#)

The group has:

- Established an agreed working definition of Safety Culture
- Established a baseline of how we focus on Safety culture now-often through process not behaviours
- Agreed the behaviours needed for Culture Change (a baseline for European railways both individually and collectively)
- Agreed how we are going to measure Culture Change consistently across Europe
- Established a forum and mechanism to share best practise and provide support for cross European safety culture development
- For us to use this as a measure and as a tool for change - what is it possible and helpful for us to measure from our safety conversations?

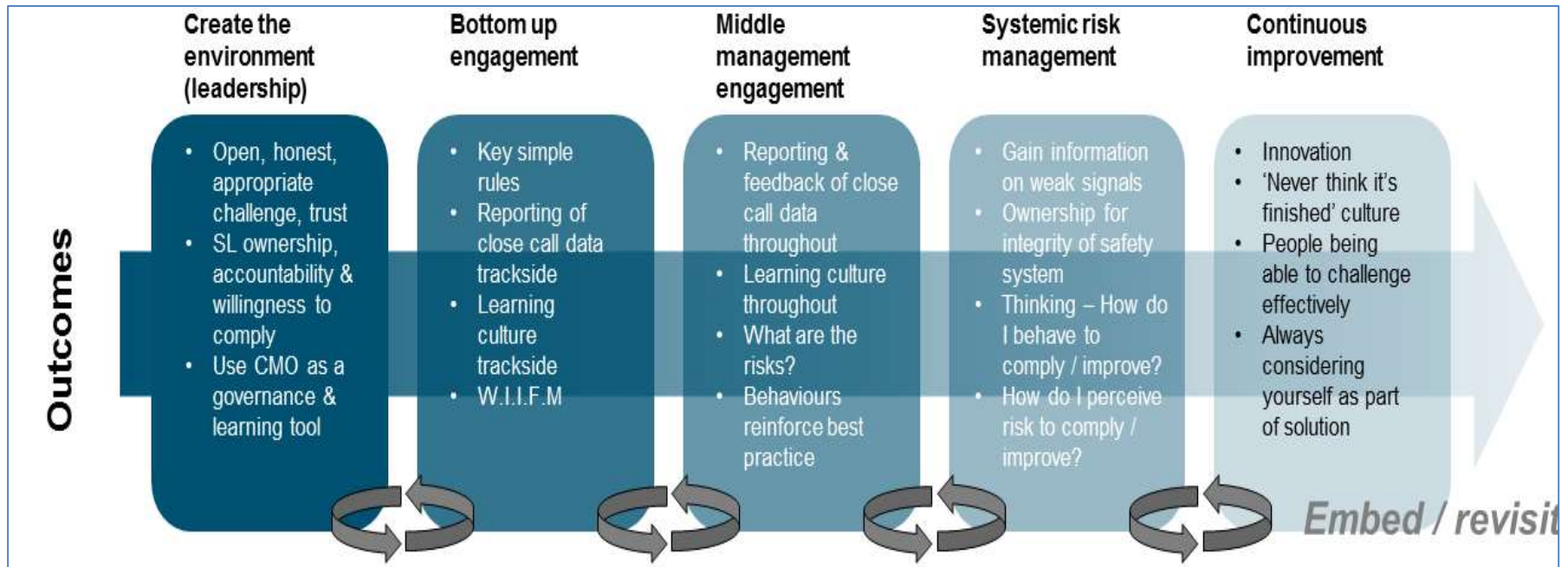
The presentation to PRIME in June will explain the outcomes from the work group, outline the planned next steps, and adopt the working group into PRIME's activity.

How we will work Cultural Change

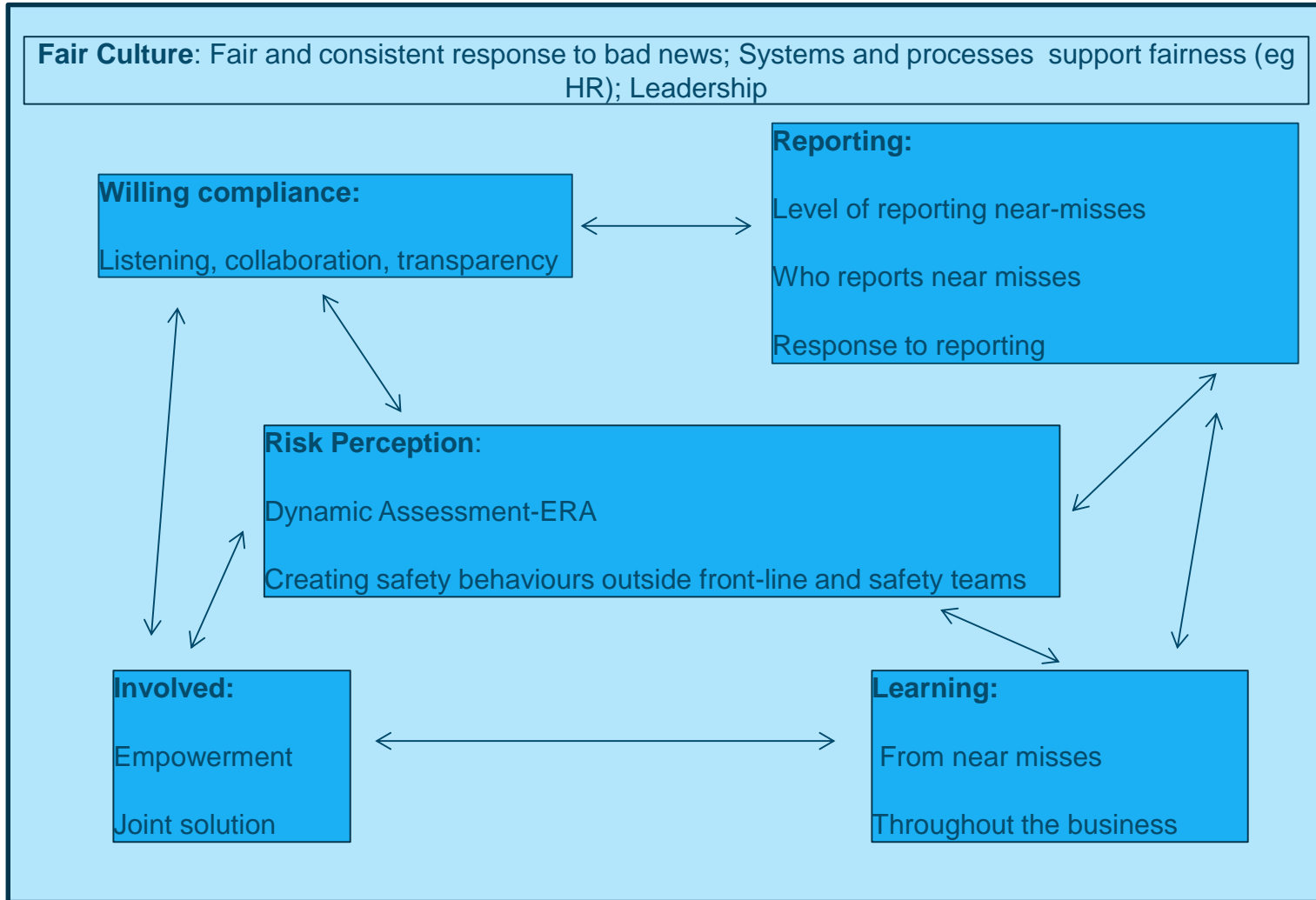
Now: We need to agree behavioural measures – the 7 cultural themes



The Cultural Change journey



Creating a baseline



Next steps:

Sharing

What to Baseline?

***What to focus on developing
across Europe?***

'Sharepoint' site



Welcome to HLIM - Safety Culture SharePoint site

This site provides the HLIM working group the opportunity to share useful documents relating to Safety Culture, access the post event packs, host discussions and ask questions.

Team Discussion





Subject

Questions still to be answered - What one question would you most like to ask the group?

What one question would you most like to ask the group?

[Add new discussion](#)

Documents

Type	Name	Modified By
	HLIM May 2015 Materials and post event pack	Murphy Amy
	HLIM January 2015 Materials and post event pack	Murphy Amy
	HLIM September 2014 Materials and post event pack	Murphy Amy
	Shared documents to support Safety Culture	Murphy Amy

[Add new document](#)

Safety Leadership and safety conversations



Network Rail

Ironmen Runaway - Gwaun-Cae-Gurwen
Loss of Control
 1st November 2014

Please select the 'Menu' button below to continue

Menu ← Back Next → ← Sound Pause ||

Exploring the barriers

Menu ← Back Next → ← Sound Pause ||

Close call data and learning

Motivation and ownership

Close Call examples

- Generator with no drip tray in place
- Texting while walking down the stairs
- Ceiling leak at a station
- Going to take a call on hands-free while driving
- Going to enter a site where ballast dust is being created without proper protection
- Obstacles blocking safe passage

CLOSE CALL REPORTING 01908 723 500

onlyone home safe every day



Feedback



Thank you for your time

Any questions?