



# Development of pan-European reference data sets

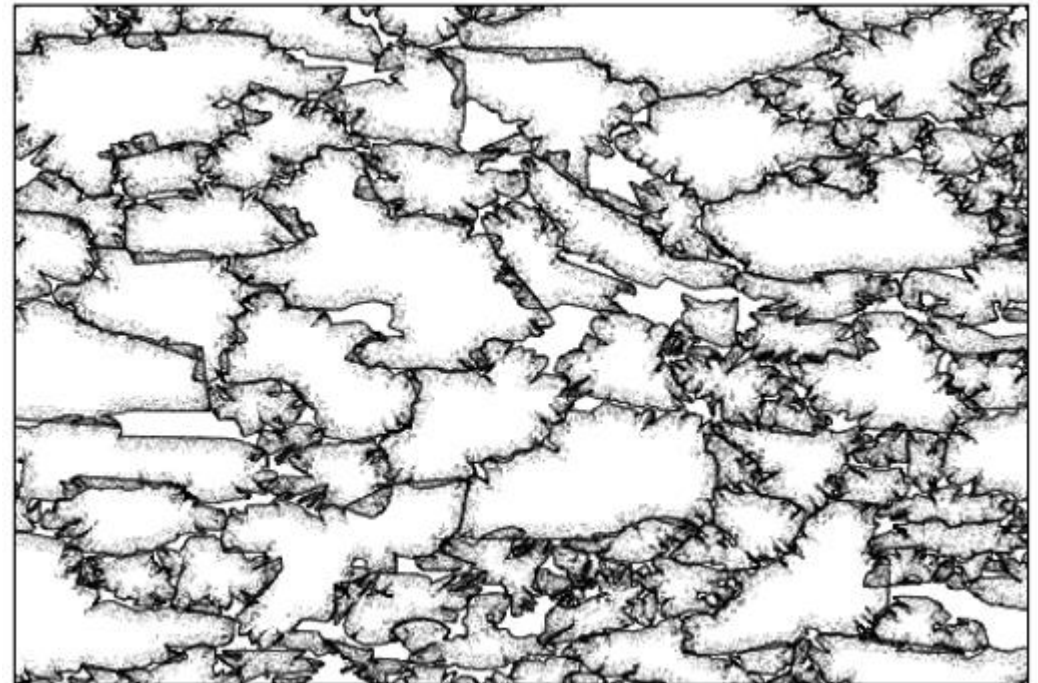
ESTAT – E4 – GISCO

# Objective

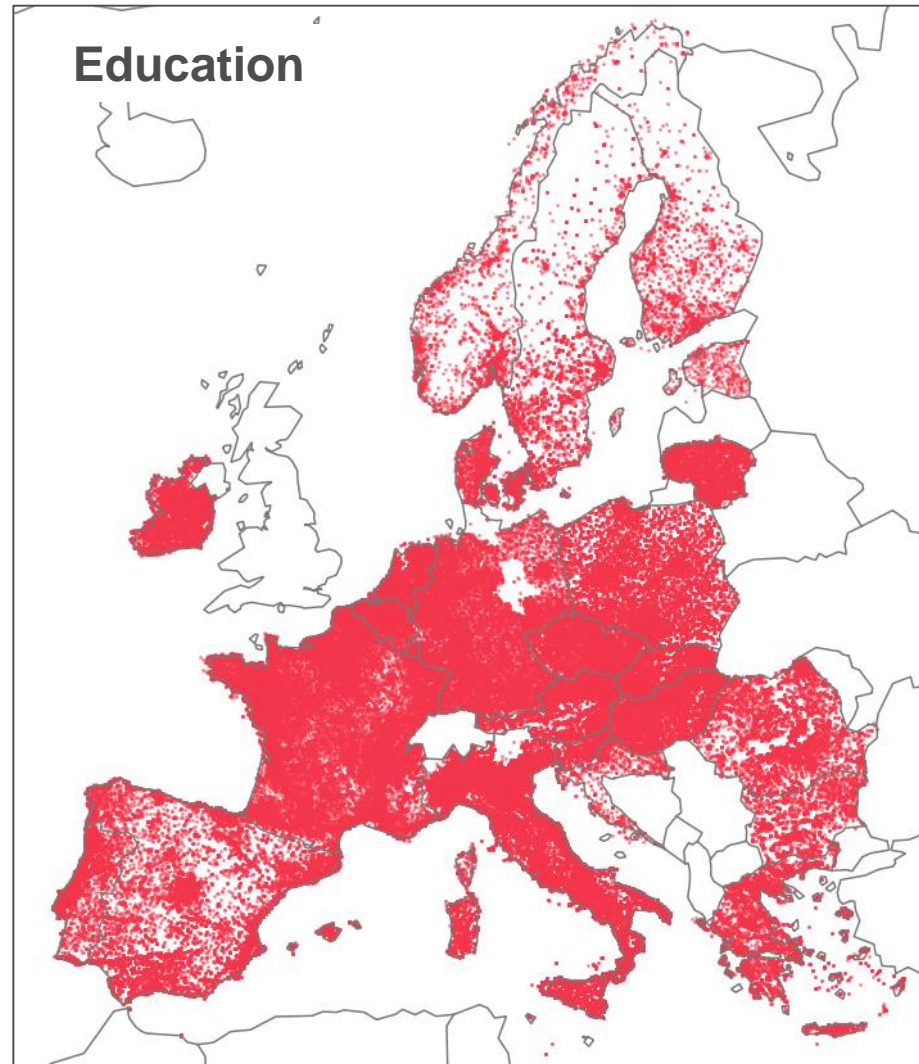
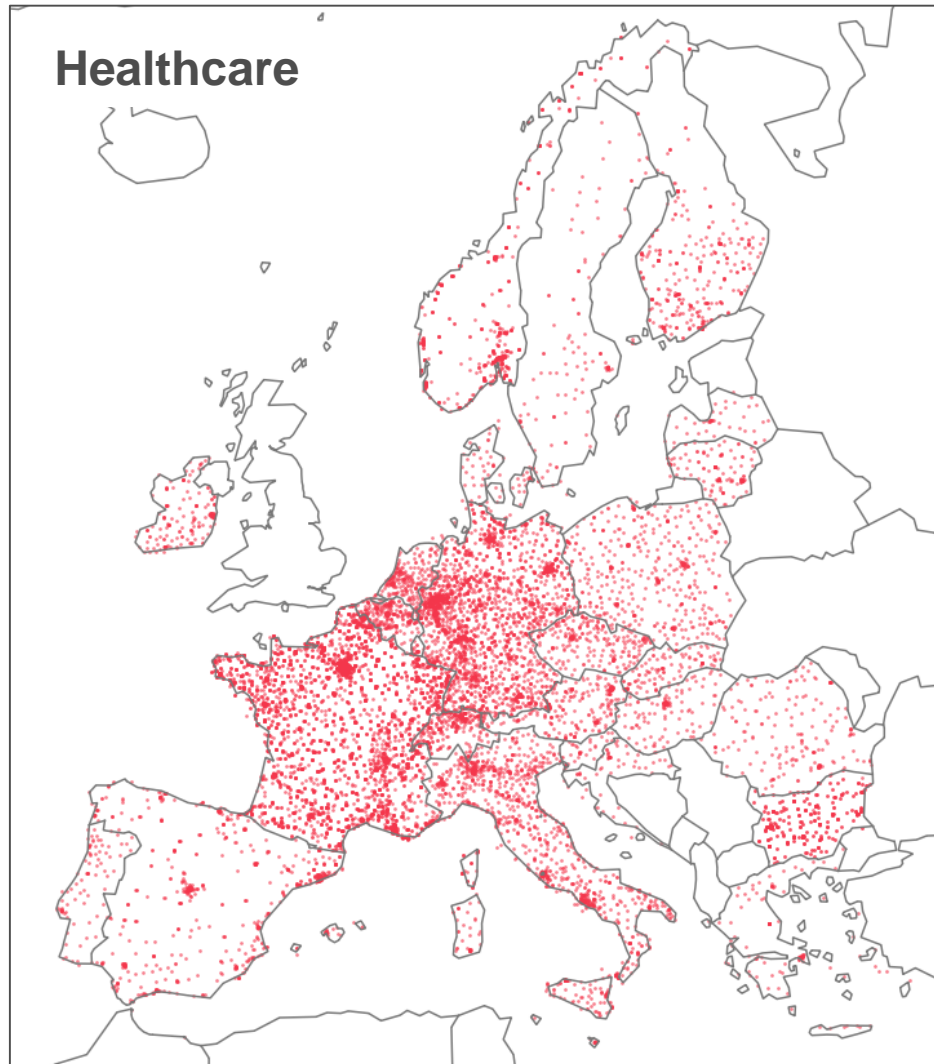
- Provide a consolidated and consistent overview of Commission needs
- Set out cross-cutting and domain specific requirements of the European Commission for EU wide geospatial information from Member States
- To support to Sustainable Development and other EU policies.
- Seek support from Member States to obtain more and better quality data

# EC Geospatial Data Requirements (II)

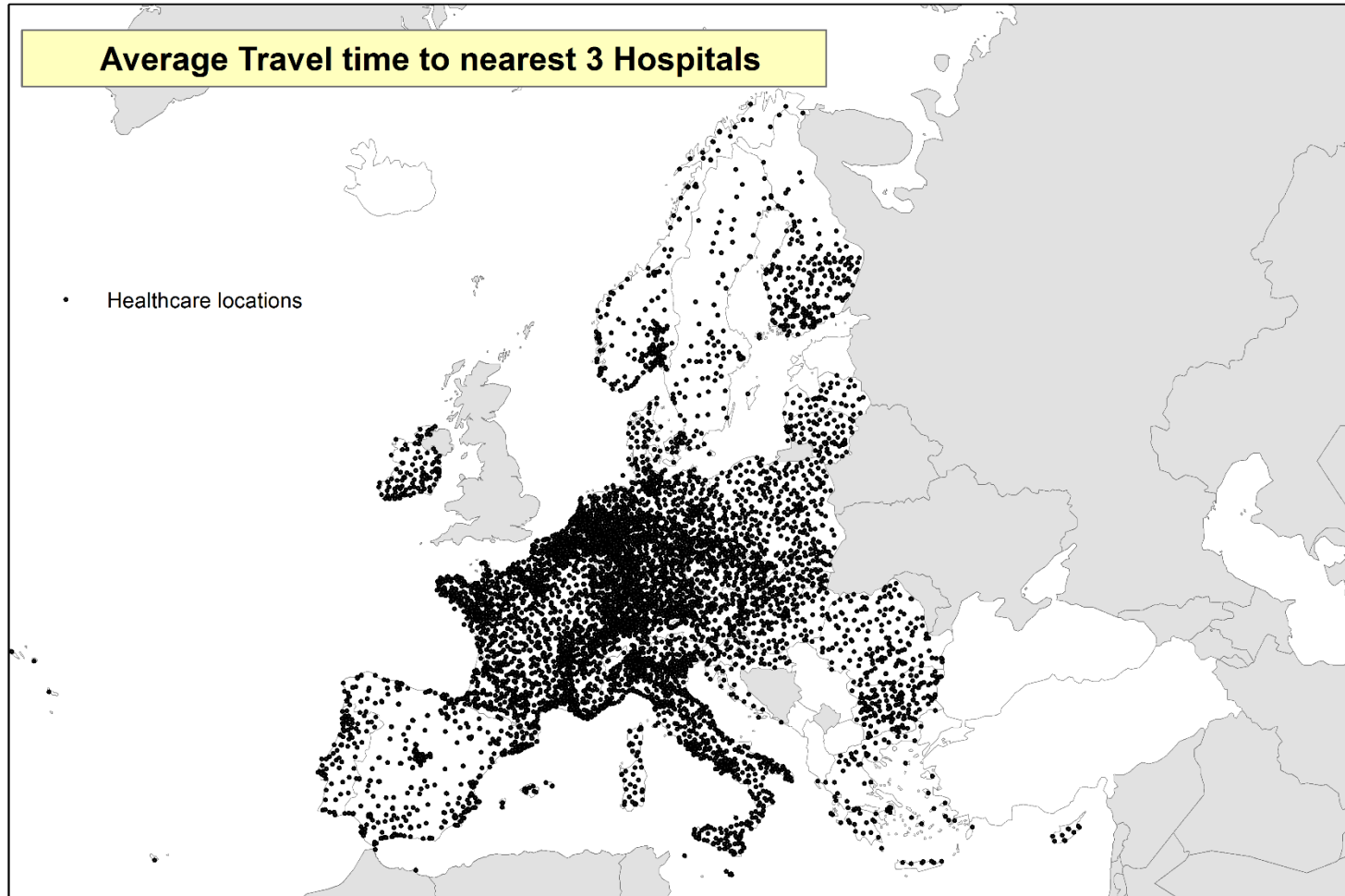
- Buildings (BU),
- Cadastral Parcels (CP),
- Addresses (AD),
- Administrative units (AU),
- Statistical Units (SU),
- Transport Networks (TN),
- Land Parcel Information System (LPIS)
- Postal Codes (PC)
- Utility and governmental services (US)



# EC Geospatial Data – (I)

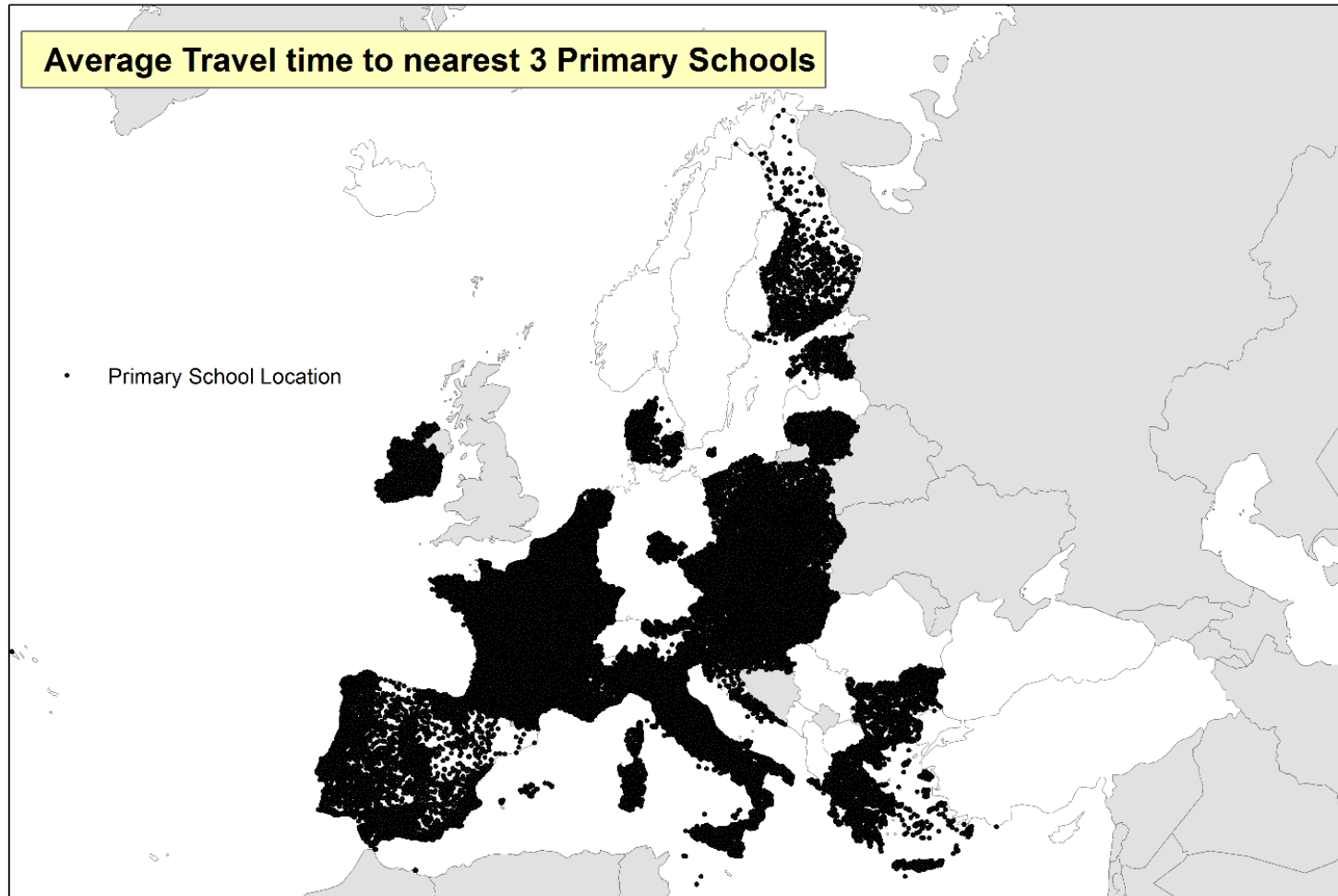


# EC Geospatial Data – (III ) – Health



© OpenStreetMap contributors

# EC Geospatial Data – (III) – Education

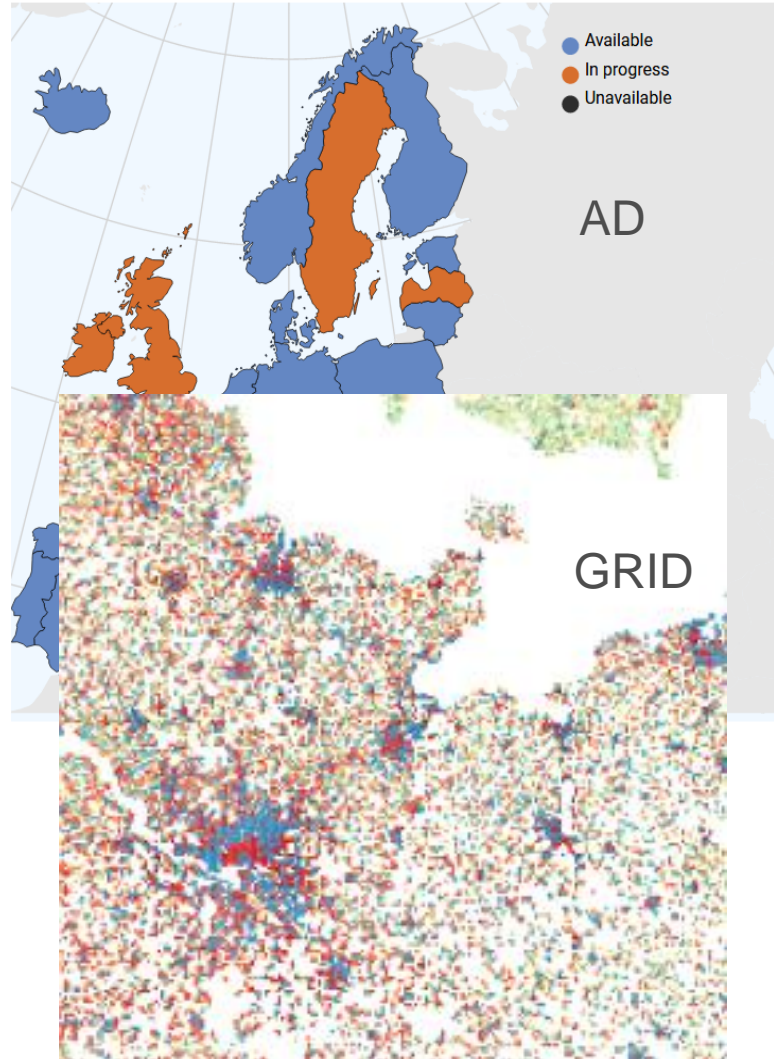


© OpenStreetMap contributors

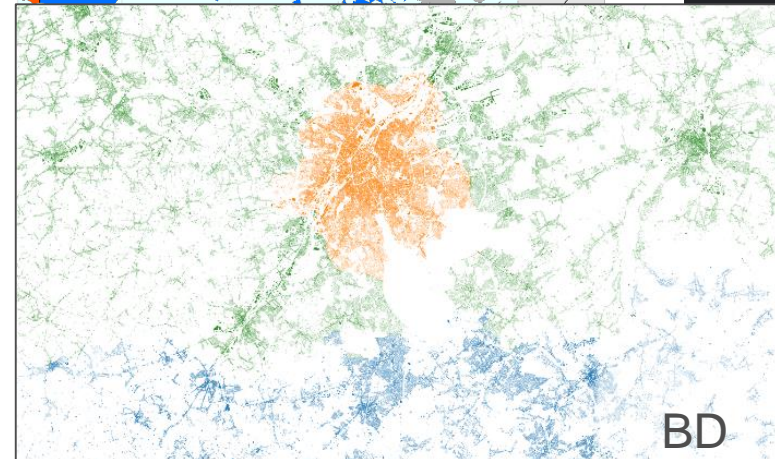
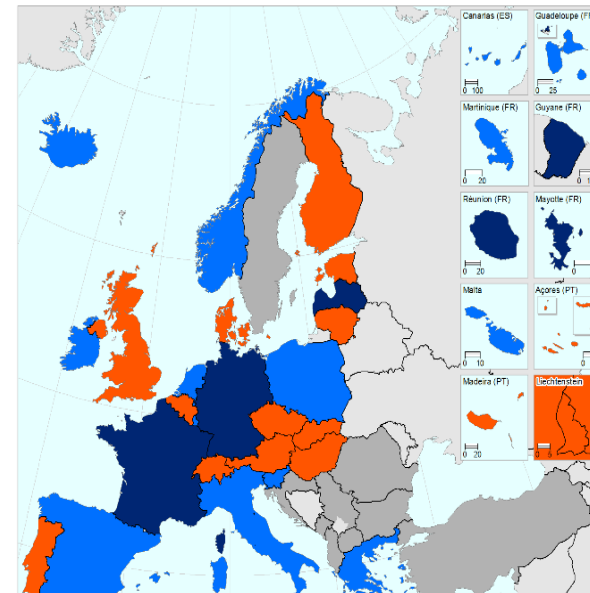
preliminary data and first calculations – validation in progress



# EC Geospatial Data – (II)



Approximate scales



# EC Geospatial Data – (IV)



GISCO Address API

English EU

API + Graphical User Interface based on eUI



# Points for consideration

- **Outdated** data (temporally) **Requirement:** update data at least once a year (\* we have access now to daily data from some MS)
- Data exists but are **not documented** in Metadata systems (neither European or MS ones). **Requirement:** Data are documented in INSPIRE/EuropeanDataPortal
- **Generalized** data (250k scale vs 10k on ground) – not usable **Requirement:** Data provided according to EU core reference data specifications
- Data are **not aligned** across datasets (AU,AD,PC, BD,TN) (road in the middle of a building, address point in a different AU unit), **Requirement:** QAQC in MS
- **Dispersed datasets per country** without a central authority **Requirement:** Central Access Point
- Quite **varying quality** control across themes and countries **Requirement:** Quality Control
- The question **who is the master** of a dataset occurs on a regular basis. **Requirement:** Coordination inside the MS
- Depending on organisations - Administrative hurdles / **Lock down mentality** –not user centric **Requirement:** Data Access for EC
- **No officially data** exists, but commercial datasets exists for the same area. **Requirement:** Public Administration data MUST exists
- Various **slight variations of INSPIRE** implementation – we prefer INSPIRE implementations. **Requirement:** Harmonising INSPIRE implementations
- **Richness** of datasets **differs** extremely (from line geometries only without attributes to full stack dataset according to INSPIRE specifications) **Requirement:** Rich data content needs to be in distributed datasets
- **Feedback loop** with MS extremely important **Requirement:** Resources at MS level to fix issues
- Missing a central repository of **QAQC tools for Memberstates**

# How can Member States contribute?

- Enhance Quality beyond INSPIRE requirements: scale, thematic coverage, temporal coherence;
- Favourable Access and use conditions: open data, reasonable fees and rights to re-disseminate;
- Increase Reactivity: speed at which new data requirements from EU services can be met (INSPIRE/UNGGIM:Europe);
- Better Harmonisation: differences in the implementation and interpretation of INSPIRE make the compilation of pan-EU products difficult without further harmonisation work;
- Ensure Availability of download services as-is. Please ensure communication if you see a white spot...

# Thank you

Contact: [estat-gisco@ec.europa.eu](mailto:estat-gisco@ec.europa.eu)



© European Union 2021

Unless otherwise noted the reuse of this presentation is authorised under the [CC BY 4.0](https://creativecommons.org/licenses/by/4.0/) license. For any use or reproduction of elements that are not owned by the EU, permission may need to be sought directly from the respective right holders.

