

Integrated Administration Control System : data sharing process by AGRI

19/06/2020

11th INSPIRE MIG meeting



European Commission
DG AGRI D.3

Mohamed EL AYDAM
mohamed.el-aydam@ec.europa.eu





OUTLINE

1. DG AGRI D3 – Implementation support and IACS
2. DG AGRI process about IACS data sharing
3. EU policy context
4. MS declaration (digital transformation)
5. CAP 2020+
6. IACS (Integrated Administration Control System)?
7. IACS spatial and non personal data
8. Concluding remarks



DIRECTORATE-GENERAL FOR AGRICULTURE AND RURAL DEVELOPMENT

Direction D - Sustainability and income support

(...) by supporting and monitoring Member States' implementation of direct support schemes, in particular as far as the Integrated Administration and Control System (**IACS**), including **LPIS**, is concerned (...)

Unit D3 - Implementation support and IACS

- ensure the establishment and follow-up of the **IACS legislative framework**
- support** the Member States in their **implementation** of the direct payments schemes as regards IACS (including dissemination of best practices)
- ensure that **action** is taken **if implementation is lacking**, (including LPIS QA).

Director-General					
Deputy Director-Generals					
A	A1	A2	A3	A4	A5
B	B1	B2	B3	B4	
C	C1	C2	C3	C4	
D	D1	D2	D3	D4	
E	E1	E2	E3	E4	E5
F	F1	F2	F3	F4	F5
G	G1	G2	G3	G4	
H	H1	H2	H3	H4	H5
I	I1	I2	I3	I4	I5
R	R1	R2	R3	R4	R5

HR Business Correspondent

+ scientific & technical support from **JRC**

Concretely: Assistance (visit to MS), Missions (LPIS QA, area monitoring system...), Technical guidelines, Conferences (MARS...), Workshops (LPIS QA, IACS...), Trainings, Services (Satellite imagery...)



DG AGRI process

Process launched in 2017

Objective:

- Efficient access to and effective re-use of IACS data

Methodological approach:

- Legal framework : INSPIRE Directive
- Collaboration with MS and EC services (ENV, CLIMA, EEA, ESTAT)
- Use case driven (→ monitoring, evaluation, reporting)
- Pilot implementation (EC support to MS)

(Main) Preliminary results:

- More and more participants in MS (4→ 15) and EC services (DEFIS, CNECT...)
- More discovery for IACS data in EU geoportal
- Support in situ to MS (BG ...)
- Guidance documents (ongoing: interpretation of INSPIRE, methodology for metadata and harmonization)

EU policy context

A European Green Deal

An economy that works for people

A Europe fit for the digital age

Protecting our European way of life

A stronger Europe in the world

A new push for European democracy

- **Data** and AI are the ingredients for innovation that can help us to find solutions to **societal challenges**, from health to **farming**, from security to manufacturing.
- **Balance** the flow and wide **use of data** while **preserving high privacy, security, safety and ethical standards**.
- Need to move from “**need to know**” to “**need to share**”
- **The public sector** has an important role in stimulating digital transformation.

MS Declaration

**Declaration for A smart and sustainable digital future
for agriculture and rural areas**

Signed in April 2019 (**almost all MS**)

(...)

*increase CAP administration efficiency, **notably in sharing
geospatial information among public administrations***

(...)

<https://ec.europa.eu/digital-single-market/en/news/eu-member-states-join-forces-digitalisation-european-agriculture-and-rural-areas>

CAP 2020+

New delivery model – shift to performance

need for data (reporting, evaluation, monitoring)

Environmental and climatic ambitions

Cross-cutting objective: digitalisation

Art 65 (HZR regulation) – data keeping and sharing



IACS ?

Article 68

Elements of the integrated system

1. The integrated system shall comprise the following elements:

(a) a computerised database;

(b) an identification system for agricultural parcels;

(c) a system for the identification and registration of payment entitlements;

(d) aid applications and payment claims;

(e) an integrated control system;

(f) a single system to record the identity of each beneficiary of the support referred to in Article 67(2) who submits an aid application or a payment claim.

**System set up
by the MS
(Regulation
1306/2013) for
CAP
management**

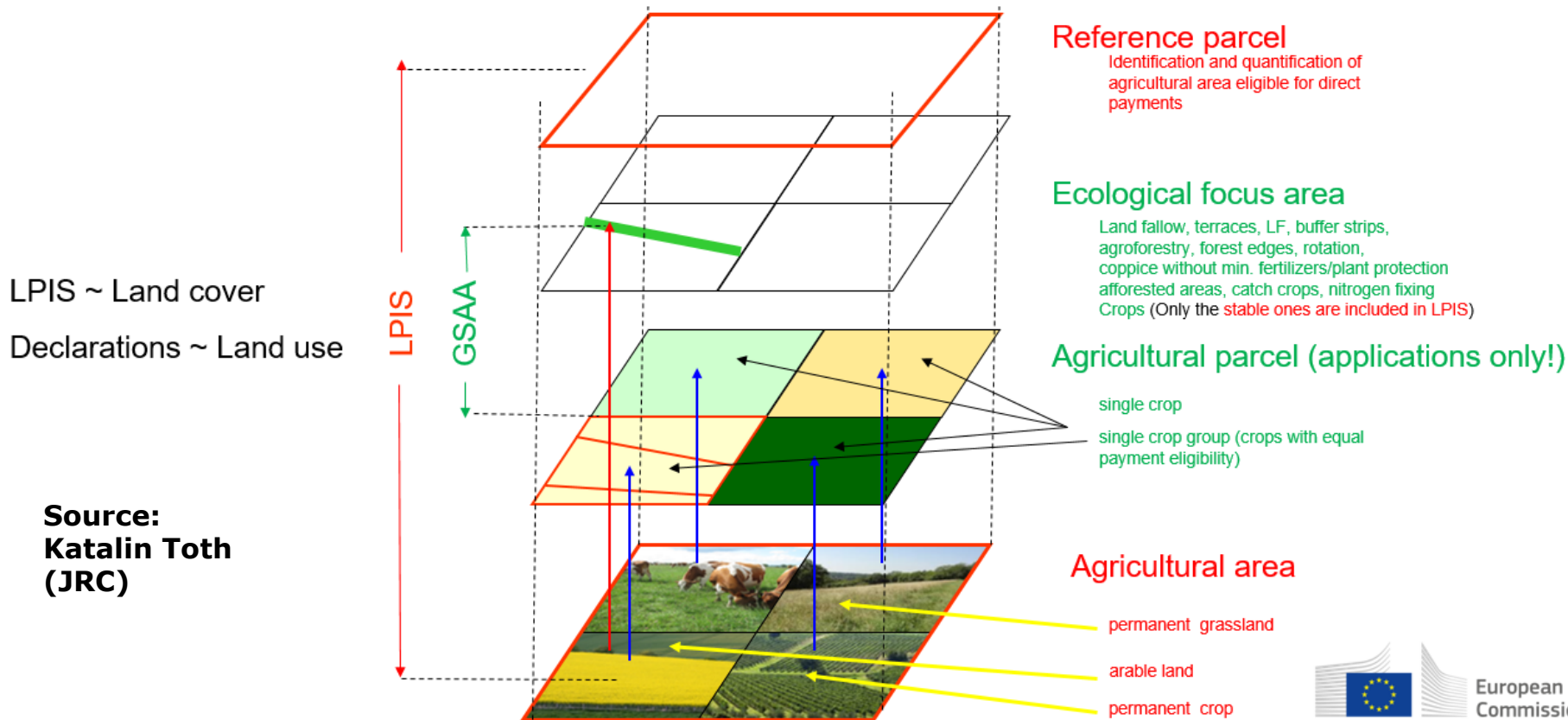


LPIS Implementing act (640/2014)

Implementing act (article 5(2) of EU Regulation 640/2014 as regards LPIS

- layer maximum eligible area for the purpose of the support schemes listed in Annex I to Regulation (EU) No 1307/2013;
- layer maximum eligible area for the purpose of the area-related measures referred to in Articles 28 to 31 of Regulation (EU) No 1305/2013;
- (c) layer of ecological focus areas listed in Article 46 of Regulation (EU) No 1307/2013
- (d) layer determine for mountain areas, areas facing significant natural constraints and other areas affected by specific constraints as referred to in Article 32 of Regulation (EU) No 1305/2013, Natura 2000 areas, areas covered by Directive 2000/60/EC.
- e) layer of agricultural land authorised for cotton production pursuant to Article 57 of Regulation (EU) No 1307/2013.
- f) layer of areas naturally kept in a state suitable for grazing or cultivation as referred to in Article 4(1)(c)(iii) of R. (EU) No 1307/2013
- g) layer of areas which have been notified to the Commission in accordance with Article 20 of Regulation (EU) No 1307/2013,
- h) layer of areas covered with permanent grasslands which are environmentally sensitive in areas covered by Council Directive 92/43/EEC or Directive 2009/147/EC of the European Parliament and of the Council
- i) layer of sensitive areas referred to in Article 45(1) of Regulation (EU) No 1307/2013 and/or areas designated by the Member States in accordance with Article 48 of that Regulation apply

List of IACS data to be shared > AGRI recommendations



+ area-related rural development measures



European
Commission

MS implementation

Shapefiles of Slovenia (LPIS data)

lpis.shp

Information provided per each parcel

GEN_ID	AREA	RABA_ID
4073408	40919.4807	1221
4073473	5091.7376	1300
4073715	1240.7032	1100
4073969	608.0908	1211
4064494	3961.0734	1100
4066827	10937.6339	1300
4199902	412.9662	1222
4735507	536.4765	1300
5351418	415.9702	1240
5351426	408.3911	1240
5306028	1880.0542	1100
5351546	1760.1335	1100
4067524	4381.1375	1300
4735587	580.2648	1211
4737365	303.8342	1100
5162120	2097.0236	1100
4070485	2003.1911	1211
4070489	365.1421	1211

Special Filter/ Query is possible

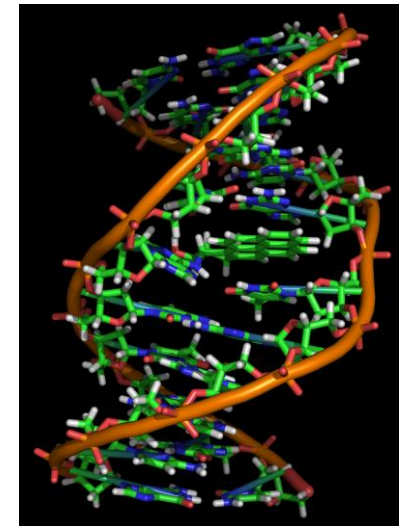
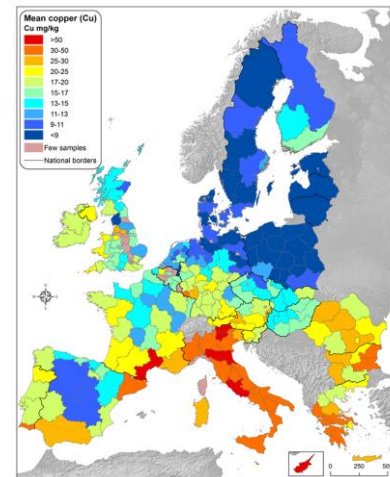
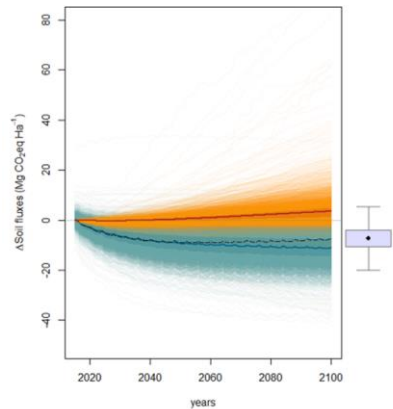
Entité	Valeur
GEN_ID	4800050
(X du point)	14.670514
(Y du point)	45.751946
Numero de parcelle	431051
Numero du sommet le plus proche	2
Partir	1
Périmètre (actuel)	147.801 m
Périmètre (ajusté, WGS84)	147.814 m
Superficie	10
Surface (actuelle)	1185.455 m ²
Surface (ajustée, WGS84)	1185.674 m ²
X du sommet le plus proche	14.670528
Y du sommet le plus proche	45.751927
Y le plus proche	68058.870000

Extremely diverse from MS to another...

sometimes between regions within a MS

Exemplifying through soil health use-case

Soil C/N fluxes Soil erosion/degradation Pesticides/pollution Soil biodiversity



- **IACS and beyond:**
 - **Land Cover, Crops/Groups, Pesticides use, fertilizer regimes, tillage, GAEC practices, crop rotation, harvest practices, vehicle loadings,...**



Concluding remarks

**Experience in data sharing by the MS:
some experience but efficiency?**

**Local implementation of IACS by the MS:
appropriate but harmonisation?**

- **DG AGRI will continue to support MS for an efficient and effective data sharing process**
 - **Under INSPIRE...**
 - **...before development towards EU data space**

- **Involvement of MIG in the process?**

Thank you for your attention