

# Canarian Islands endemic pollinators of the Laurel Forest zone

Conservation plan 2023–2028



Yeray Monasterio León, Carlos Ruiz Carreira, Ruth Escobés Jiménez, Javier Almunia, Martin Wiemers, Ante Vujic, Craig Macadam, Julia Raser, Axel Hochkirch





# Canarian Islands endemic pollinators of the Laurel Forest zone

Conservation plan 2023–2028

Yeray Monasterio León<sup>1</sup>, Carlos Ruiz Carreira<sup>2</sup>, Ruth Escobés Jiménez<sup>3</sup>, Javier Almunia<sup>4</sup>, Martin Wiemers<sup>5</sup>, Ante Vujic<sup>6</sup>, Craig Macadam<sup>7</sup>, Julia Raser<sup>8</sup>, Axel Hochkirch<sup>8,9</sup>

1. Asociación Española para la Protección de las Mariposas y su Medio (ZERYNTHIA)
2. University of La Laguna
3. Asociación Española para la Protección de las Mariposas y su Medio (ZERYNTHIA)
4. Loro Parque Foundation
5. Butterfly Conservation Europe
6. University of Novi Sad
7. Buglife
8. Universität Trier
9. IUCN SSC Invertebrate Conservation Committee

Neither the European Commission nor any person acting on behalf of the Commission is responsible for the use that might be made of the following information.

Luxembourg: Publications Office of the European Union, 2023

© European Union, 2023

Reuse is authorised provided the source is acknowledged.

The reuse policy of European Commission documents is regulated by Decision 2011/833/EU (OJ L 330, 14.12.2011, p. 39).

For any use or reproduction of photos or other material that is not under the EU copyright, permission must be sought directly from the copyright holders.

PDF ISBN: 978-92-68-01057-0 doi: 10.2779/75306 KH-07-23-141-EN-N

## Getting in touch with the EU

### In person

All over the European Union there are hundreds of Europe Direct information centres. You can find the address of the centre nearest you at: [https://europa.eu/european-union/contact\\_en](https://europa.eu/european-union/contact_en)

### On the phone or by email

Europe Direct is a service that answers your questions about the European Union. You can contact this service:

– by freephone: 00 800 6 7 8 9 10 11 (certain operators may charge for these calls),

– at the following standard number: +32 22999696 or

– by email via: [https://europa.eu/european-union/contact\\_en](https://europa.eu/european-union/contact_en)

## Finding information about the EU

### Online

Information about the European Union in all the official languages of the EU is available on the Europa website at: [https://europa.eu/european-union/index\\_en](https://europa.eu/european-union/index_en)

### EU publications

You can download or order free and priced EU publications at: <https://publications.europa.eu/en/publications>. Multiple copies of free publications may be obtained by contacting Europe Direct or your local information centre (see [https://europa.eu/europeanunion/contact\\_en](https://europa.eu/europeanunion/contact_en)).

## EU law and related documents

For access to legal information from the EU, including all EU law since 1952 in all the official language versions, go to EURLex at: <http://eur-lex.europa.eu>

## Open data from the EU

The EU Open Data Portal (<http://data.europa.eu/euodp/en>) provides access to datasets from the EU. Data can be downloaded and reused for free, both for commercial and non-commercial purposes.

## Citation information

This publication has been drafted by IUCN within the framework of the contract No 07.0202/2020/839411/SER/ENV.0.2 'Action Plans for conservation of threatened pollinator species in the EU'. The information and views set out in this publication do not necessarily reflect the official opinion of the Commission, or IUCN. The Commission does not guarantee the accuracy of the data included in this publication. Neither the Commission nor IUCN or any person acting on the Commission's behalf, including any authors or contributors of the publication themselves, may be held responsible for the use which may be made of the information contained therein. The designation of geographical entities in this book, and the presentation of the material, do not imply the expression of any opinion whatsoever on the part of the European Commission, IUCN or other participating organisations concerning the legal status of any country, territory or area, or of its authorities, or concerning the delimitation of its frontiers or boundaries. The views expressed in this publication do not necessarily reflect those of the European Commission, IUCN or other participating organisations. Reproduction is authorised provided the source is acknowledged.

**Text:** © European Union, 2023

**Authors:** Yeray Monasterio León, Carlos Ruiz Carreira, Ruth Escobés Jiménez, Javier Almunia, Martin Wiemers, Ante Vujic, Craig Macadam, Julia Raser, Axel Hochkirch

**Design and layout:** Imre Sebestyén jr. / UNITgraphics.com

**Picture credits on cover page:** *Pieris cheiranthi* © Asociación ZERYNTHIA

**Recommended citation:** Yeray Monasterio León, Carlos Ruiz Carreira, Ruth Escobés Jiménez, Javier Almunia, Martin Wiemers, Ante Vujic, Craig Macadam, Julia Raser, Axel Hochkirch (2023). *Canarian Islands endemic pollinators of the Laurel Forest zone - Conservation plan 2023-2028*. Publication prepared for the European Commission within the framework of the contract No 07.0202/2020/839411/SER/ENV.0.2



# Contents

---

<b>Introduction</b> .....	<b>1</b>
<b>Status review</b> .....	<b>4</b>
<b>Canary Islands Large White (<i>Pieris cheiranthi</i>)</b> .....	<b>4</b>
Species description .....	4
Functions and values .....	13
Historical account .....	14
Current distribution and demography .....	14
Habitat and resource assessment .....	16
Threat analysis .....	17
<b>Canary Brimstone (<i>Gonepteryx cleobule</i>)</b> .....	<b>20</b>
Species description .....	20
Functions and values .....	27
Historical account .....	28
Current distribution and demography .....	29
Habitat and resource assessment .....	30
Threat analysis .....	31
<b>Canarian Laurisilva Bee (<i>Lasioglossum chalcodes</i>)</b> .....	<b>32</b>
Species description .....	32
Functions and values .....	33
Historical account .....	33
Current distribution and demography .....	34
Habitat and resource assessment .....	35
Threat analysis .....	35
<b>Laurisilva Hoverfly (<i>Heringia adpropinquans</i>)</b> .....	<b>36</b>
Species description .....	36
Functions and values .....	38
Historical account .....	38
Current distribution and demography .....	39
Habitat and resource assessment .....	39
Threat analysis .....	39
<b>Conservation planning</b> .....	<b>40</b>
<b>Conservation Action Plan</b> .....	<b>41</b>
Vision .....	41
Goals, objectives and actions .....	42
<b>References</b> .....	<b>54</b>
<b>Annexes</b> .....	<b>57</b>





# Introduction

---

This document was drafted within the framework of an EU funded project, Action Plans for conservation of threatened pollinator species in the EU, launched by the European Commission in the context of the implementation of the EU Pollinators Initiative<sup>1</sup>. The objective of the project was to develop three EU Species Action Plans for the most threatened pollinator species, by building on existing experience and using the European Red List as a reference. The methodology to develop these action plans is based on the Guidelines for Species Conservation Planning (IUCN SSC, 2017), developed by the former IUCN SSC Conservation Planning Sub-Committee, as well as the CPSC Conservation Planning Principles and Steps (CPSC, 2020), developed by IUCN SSC Conservation Planning Specialist Group (CPSC).

Over the course of the project, the experts shortlisted 15 species candidates for an action plan. This list was verified during a dedicated workshop on 18 June 2021. After the validation of the selection, three conservation action plans were selected, including the Canary Islands multi-species action.

## **Background on the Canary Islands**

The Canary Islands are part of the Mediterranean/Atlantic Hotspot of Biodiversity (Myers *et al.*, 2000) and home to numerous endemic species, including many insects (Juan *et al.*, 2000; Triantis *et al.*, 2010).

They consist of eight inhabited islands: La Graciosa, Lanzarote, Fuerteventura, Gran Canaria, Tenerife, La Gomera, La Palma and El Hierro (Del Arco Aguilar, Rodríguez Delgado, 2018). The archipelago is located west of the Moroccan coast between 13°20´ and 18°10´ W and 27°37´ and 29°25´ N and belongs to the biogeographic region of Macaronesia together with the Azores, Madeira, Selvagens and Cape Verde (Del Arco Aguilar & Rodríguez Delgado, 2018). The Canary Islands are well known for their high degree of endemism with 45% of the arthropod species being endemic (Triantis *et al.*, 2010). The highest species numbers are found on the central Canary Islands (Tenerife and Gran Canaria), due to the islands being older, their larger size and altitudinal gradients. The vegetation of the central and western Canary Islands is largely shaped by altitudinal belts, with strong variation according to the exposure of the slopes. The northern slopes are generally cooler, more humid and have more rainfall, while the southern slopes are warmer and drier (Figure 1 and Figure 2); (Del Arco Aguilar & Rodríguez Delgado, 2018). The Canarian laurel forests represent relics of a forest type that was widespread in the Mediterranean 20 million years ago (Morales *et al.*, 1996). This ecosystem is particularly important in terms of biodiversity and endemism, and plays an important role for threatened insect species, including pollinators like *Pieris cheiranthi*, *Gonepteryx cleobule*, *Lasioglossum chalcodes* and *Heringia adpropinquans*.

---

<sup>1</sup> <https://eur-lex.europa.eu/legal-content/EN/TXT/?uri=CELEX:52018DC0395>

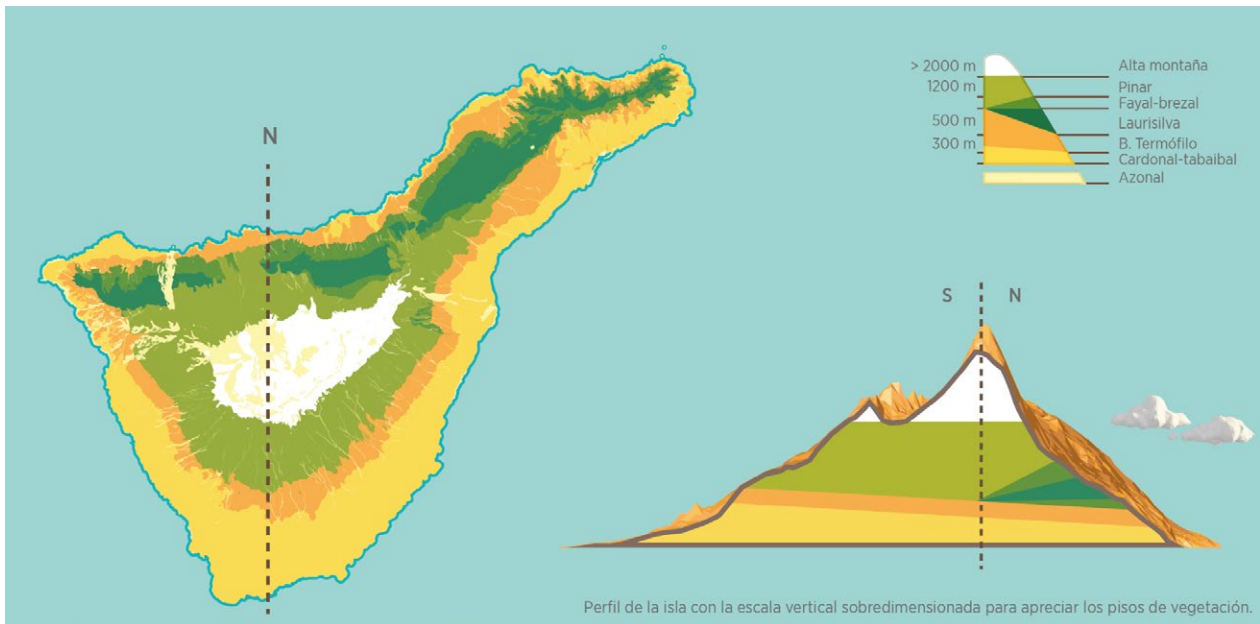


Figure 1 Altitudinal vegetation belts of Tenerife (Gobierno de Canarias, Consejería de Educación, Universidades y Sostenibilidad)

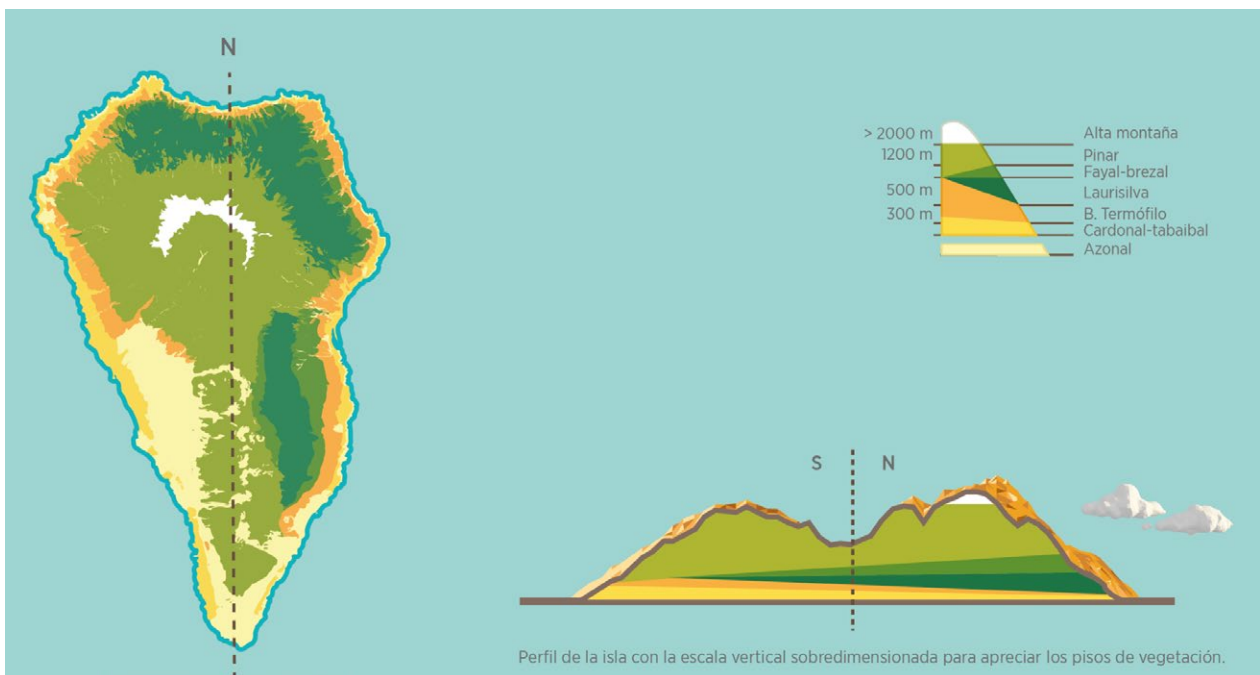


Figure 2 Altitudinal vegetation belts for La Palma (Gobierno de Canarias, Consejería de Educación, Universidades y Sostenibilidad)

The Canary network of protected areas (Figure 3) occupies 40.4% of the islands' surface area (Del Arco Aguilar & Rodríguez Delgado, 2018); 89% of Protected Natural Areas were declared as Special Areas of Conservation (SAC) under the Habitats Directive and have consequently specified protection measures in addition to the recovery or conservation of species (Del Arco Aguilar & Rodríguez Delgado, 2018). The

most important conservation legislation started in 1989 with the national Law of Conservation of Natural Reserves and Wild Flora and Fauna (Del Arco Aguilar & Rodríguez Delgado, 2018). The current legislation is Law 42/2007, of 13 December, on Natural Heritage and Biodiversity, last amended on 31 December 2020. The network of protected natural areas (Figure 3) contains large parts of the laurel forests.





Figure 3 Protected Area Network of the Canary Islands (red: Parque Rural, green: Reserva Natural Especial, yellow: Parque Natural, orange: Parque Nacional, dark blue: Monumento Natural, light blue: Paisaje Protegido). (Gobierno de Canarias, Consejería de Educación, Universidades y Sostenibilidad)

## Status review

# Canary Islands Large White (*Pieris cheiranthi*)

## Species description

### Systematics / taxonomy

The Canary Islands Large White (Figure 4), *Pieris cheiranthi* (Hübner, 1808), is endemic to the Canary Islands. It belongs to the family Pieridae, subfamily Pierinae (Dapporto *et al.*, 2019). Its closest relatives based upon a recent phylogeny (Figure 5), (Dapporto *et al.*, 2019) are the Madeira endemic *Pieris wollastoni* (Butler, 1886) and the Large White *Pieris brassicae* (Linnaeus, 1758) (Figure 6), a widespread Palearctic species. The latter species is found from North Africa to the Himalayas and single specimens have been recorded on the eastern Canary Islands (Wiemers, 1995), which are not inhabited by *P. cheiranthi*. The species status of *Pieris cheiranthi* has been confirmed by an allozyme study (Geiger & Scholl, 1985) as well as a study of the

mitochondrial phylogeny (Dapporto *et al.*, 2019); (Figure 5).

*P. cheiranthi* has two subspecies: *P. cheiranthi cheiranthi*, described from Tenerife (Figure 7) and *P. cheiranthi benchoavensis* (Figure 8), described from La Palma (Pinker, 1968). Rose (1976) points out that two different morphs are present on La Palma: one with smaller specimens than those from Tenerife and with less developed black spots and the other barely indistinguishable from the ones found on Tenerife. The smaller specimens are similar to hybrids between *P. cheiranthi* and *P. brassicae* (Wiemers, 1992). Some authors have suggested that the extinct population of La Gomera could also be ascribed to the La Palma subspecies.



Figure 4 *Pieris cheiranthi cheiranthi* from Tenerife. (Photo: Martin Wiemers)

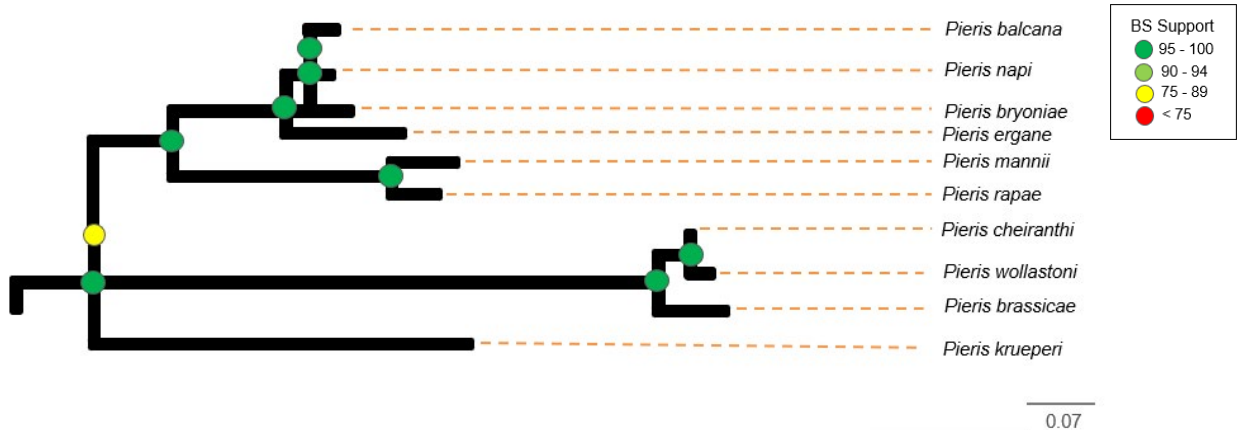


Figure 5 Excerpt of the *Pieris* branch of a multi-locus phylogenetic tree for all European butterfly species (Based on Dapporto et al., 2019)



Figure 6A-D Comparison of the morphology of *P. cheiranthi* (left) male and female (female above) and *P. brassicae* (right) male and female (female above). (Photos: Yeray Monasterio)





Figure 7A-B *Pieris cheiranthi cheiranthi* from Tenerife. (Photos: Yeray Monasterio)



Figure 8A-B *Pieris cheiranthi benchoavensis* from La Palma. (Photos: Yeray Monasterio)



The early egg stages of *P. cheiranthi* differ from *P. brassicae* (Eitschberger & Wiemers, 1991). The yellow eggs of *P. cheiranthi* (Figure 9) have “13–14 longitudinal ribs (17–18 in *P. brassicae*) and about eight of them reach the micropyle zone (this is not the case in *P. brassicae*)”. The caterpillars of *P. cheiranthi* (Figures 10–13) are greenish grey and specimens from La Palma have a yellow touch (Wiemers, 1995). Contrary to *P. brassicae*, the black markings of *P. cheiran-*

*thi* are more regular and smaller and the hair is shorter (Wiemers, 1995). *P. brassicae* caterpillars have a broad black band around the triangular front which is almost missing in *P. cheiranthi* (Figure 12). The pupa of *P. cheiranthi* (Figure 14) has reduced markings and long lateral spines compared to Central European *P. brassicae* (but quite similar to Mediterranean *P. brassicae*) (Wiemers, 1995).



Figure 9 Eggs of *Pieris cheiranthi benchoavensis* (La Palma) on *Crambe* sp. (Photo: Yeray Monasterio)



Figure 10 First instar larvae of *Pieris cheiranthi benchoavensis* (La Palma) on *Crambe* sp. (Photo: Yeray Monasterio)



Figure 11A-B *Pieris cheiranthi cheiranthi* developed caterpillar. (Photos: Yeray Monasterio)





Figure 12 Comparison between *Pieris cheiranthi* (above) and *Pieris brassicae* caterpillars. (Photo: Yeray Monasterio)



Figure 13 *Pieris cheiranthi cheiranthi* pre-pupa. (Photo: Yeray Monasterio)



Figure 14 *Pieris cheiranthi cheiranthi* pupa. (Photo: Yeray Monasterio)



## Biology and ecology

*Pieris cheiranthi* is listed as Endangered on the IUCN Red List of Threatened Species (van Swaay *et al.*, 2010b). The species is multivoltine with seven to eight (not well separated) generations per year, and therefore, all stadia are present throughout the year (Tolman & Lewington, 2012; Wiemers, 1995). The species lives at elevations between 100 and 2,100 metres in deeply excavated barrancos in laurel forest and wet cliffs (van Swaay *et al.*, 2010b). The species prefers cool, moist and shaded locations (Tolman & Lewington, 2012). During the night the butterflies rest in tall herbs (> 1 m), shrubs, exposed or off host-plants (Middleton-Welling *et al.*, 2020a, b).

The primary habitat is made up of deep and humid ravines with the presence of monteverde vegetation. In these environments, caterpillars mainly feed on *Crambe* spp. (Figure 15 and Figure 16). This habitat has a total area of 1,449 ha in Tenerife, where only 19% corresponds to laurel forest. Caterpillars feed on *Crambe monteverde*, *Crambe santosii* and *Descurainia millefolia*. Acosta-Fernández (2009) suggests the possible use of *Lobularia canariensis*, but this hypothesis still needs to be tested. The caterpillars feed on the leaves after the plant has flowered once (Middleton-Welling *et al.*, 2020a, 2020b). The ar-

rival of the nasturtium (*Tropaeolum majus*, Figure 17) on the Canary Islands has favoured colonisation of the secondary habitat of *P. cheiranthi* outside ravines, taking advantage of urban and agricultural environments. This invasive plant of South American origin grows widely in the north of Tenerife, where the microclimatic characteristics favour the butterfly to thrive in anthropised environments. Parasitism rates of *P. cheiranthi* are particularly high in this secondary habitat. The eggs are deposited in batches of 5–50 eggs depending on the plant size (Middleton-Welling *et al.*, 2020a, b ; Wiemers, 1995). Wiemers (1995) found a large batch of eggs on the cultivated *Brassica oleracea* (cabbage plant) in a garden in the Laurel Forest zone, suggesting that other Brassicaceae may occasionally be chosen as host plants.

The species is linked to humid and shady slopes and ravines, often characterised by the existence of monteverde vegetation. In these environments, butterflies tend to fly at the boundary between shady areas and those where sunlight hits. Although specimens have been observed at elevations well above their optimal habitat (up to 2,100 m in Tenerife), it can generally be defined as a relatively sedentary species, closely linked to its habitat.



Figure 15 *Crambe* sp. from Tenerife. (Photo: Yeray Monasterio)





Figure 16 *Crambe* sp. from La Palma. (Photo: Yeray Monasterio)



Figure 17 *Nasturtium* (*Tropaeolum majus*) on Tenerife. (Photo: Yeray Monasterio)





Figure 18 Distribution of *Crambe* species on the Canary Islands. X : *C. sventenii*, \* : *C. scaberrima*, \* : *C. laevigata*, \* : *C. gomerae*, \* : *C. gomerae subsp. hirsuta*, \* : *C. microcarpa*, \* : *C. feuillei*, o : *C. scoparia*, o : *C. pritzelii*, o : *C. tamadabensis*, o : *C. arborea*, o : *C. strigosa*, o : *C. wildpretii*, o : *C. santosii*. (Soto Medina, 2015 <https://acceda.cris.ulpgc.es/handle/10553/24500>)

## Functions and values

Butterflies are among the most suitable flagship species among insects with a similar flagship potential as birds (Oberhauser & Guiney, 2009). Even though their pollination services may be limited (Ollerton, 2017), they are frequently regarded as prominent pollinators by the public. Due to their popularity, butterfly conservation has a huge potential in Europe and conservation action plans exist already for numerous species. The popularity of butterflies is also illustrated by the high number of specialised conservation NGOs, such as Butterfly Conservation Europe, the Swallowtail and Birdwing Conservation Trust, etc. In Spain, the Asociación Española

para la Protección de las Mariposas y su Medio ZERYNTHIA specialises in the conservation of butterflies and moths.

*P. cheiranthi* is protected in the autonomous community of the Canary Islands through Annex I of Law 4/2010, of 4 June, of the Canary Catalogue of Protected Species. The subspecies *P. cheiranthi cheiranthi* (Tenerife) is classified as 'in danger of extinction', while the La Palma population is not protected. It is also a key element in the management of various protected natural areas where it exists, many of them included within the Natura 2000 Network.

## Historical account

Figure 19 shows the historical records of *P. cheiranthi* from La Palma, La Gomera and the north of Tenerife. The records from Gran Canaria (Higgins & Riley, 1970) are doubtful (Wiemers, 1995) and not considered here. In the evaluation for its inclusion in the Catalogue of Threatened Species of the Canary Islands (File Piecheche

11/2009) the area of occupancy was estimated at 3.75 km<sup>2</sup>, equivalent to 15 squares of 500 x 500 metres based on the information available in the Canary Islands Biodiversity Database (2008 version). This report estimates a 90% reduction in its area of occupancy during the last 30 years.



### Legend

- 1800-1974
- ◆ 1975-1994
- ⊙ doubtful/stray

Figure 19 Historical records (1800–1994) of *Pieris cheiranthi* on La Palma, La Gomera, Tenerife and Gran Canaria (from west to east). (Adapted from Wiemers, 1995)

A review of the bibliography of a period of 130 years (1889–2018) provides data assignable to 66 UTM squares of 1x1 km, which implies a historical area of occupancy of about 66 km<sup>2</sup> on Tenerife. 34 squares correspond to the period between

1889 and 2000, 22 squares to 2001–2010, and 30 squares to 2011–2018. Only 45 of these grids are located in their primary habitat. The rest could be considered unique, rambling or isolated specimens.

## Current distribution and demography

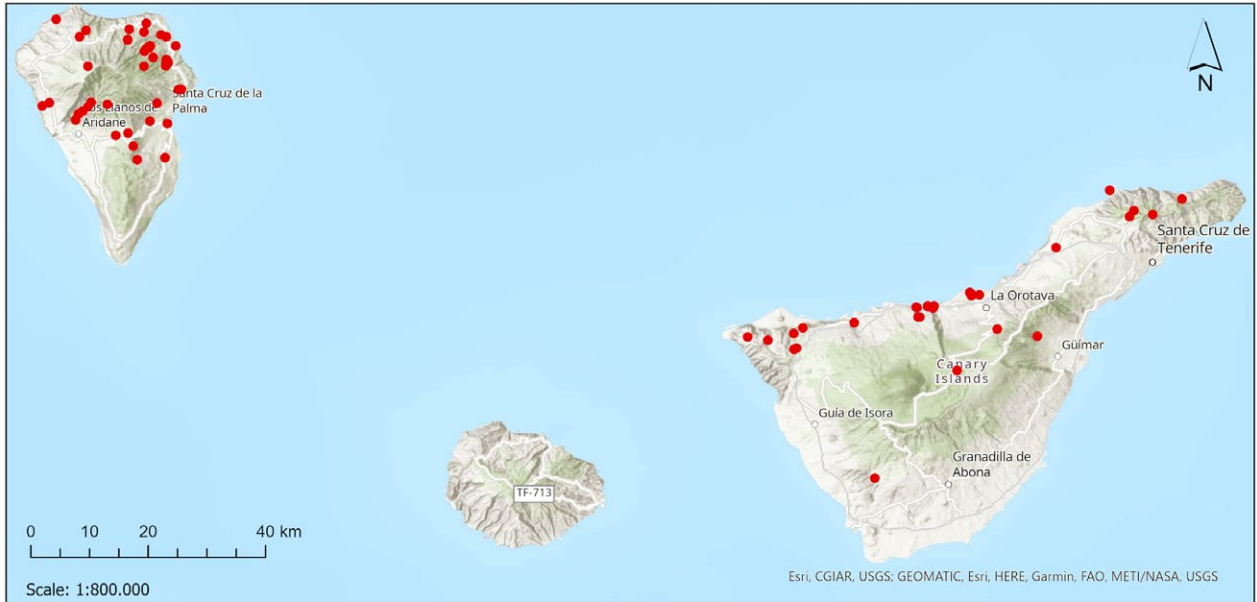
*P. cheiranthi* occurs in the north of Tenerife and one locality in the south of Tenerife (Barranco del Infierno) (Figures 20–22). On La Palma it is widespread and far more common than on Tenerife (van Swaay *et al.*, 2010b). On La Gomera the species had not been found after 1975 and was thought to be regionally extinct (Tolman &

Lewington, 2012, van Swaay *et al.*, 2010b ; Wiemers, 1995). In 2013, a small population (12 fresh butterflies) was reported from near Agulo (Wolfgang Wagner), but further searches by other lepidopterologists (Manuel Archavaleta in 2015, Martin Wiemers in 2017, Dulce Plasencia and Francisco Damián Alfonso in 2019) were

unsuccessful. The existing population in Teno (Tenerife) is separated from Agulo (La Gomera) by a distance of 35 km. Therefore, it seems reasonable to think of a temporary settlement as a result of a dispersion event. The estimated area of occupancy (AOO) is ca. 350 km<sup>2</sup>, the extent of occurrence (EOO) less than 5,000 km<sup>2</sup>.

The number of locations is less than or equal to five (van Swaay *et al.*, 2010b).

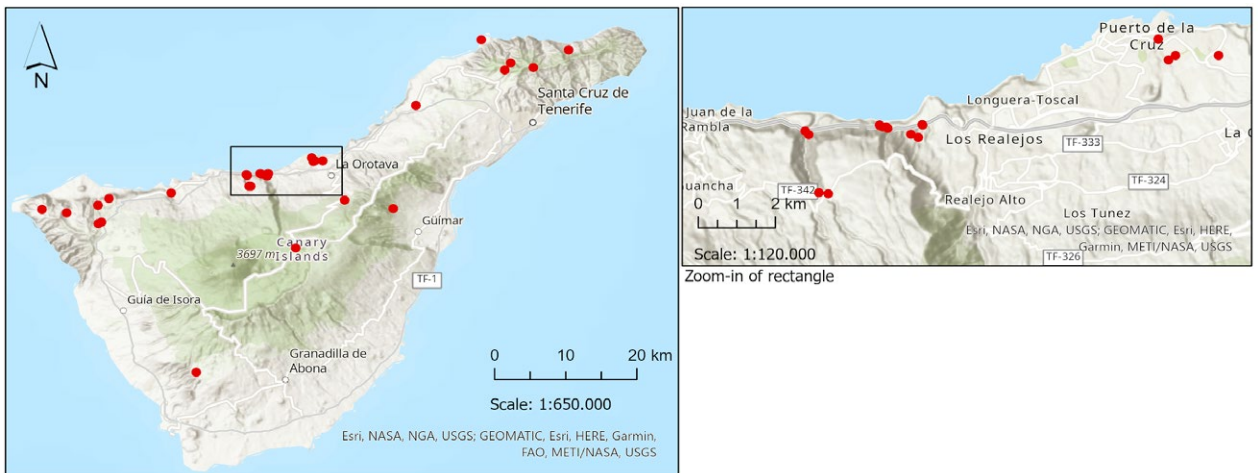
Currently the ZERYNTHIA Association carries out a butterfly monitoring programme in the Canary Islands (Figure 23). The results will make it possible to analyse population trends on Tenerife and on La Palma more thoroughly in the future.



**Legend**

- Validated records from Escobés R, iNaturalist, Monasterio León Y, observation.org, Wiemers M & ZERYNTHIA Association.

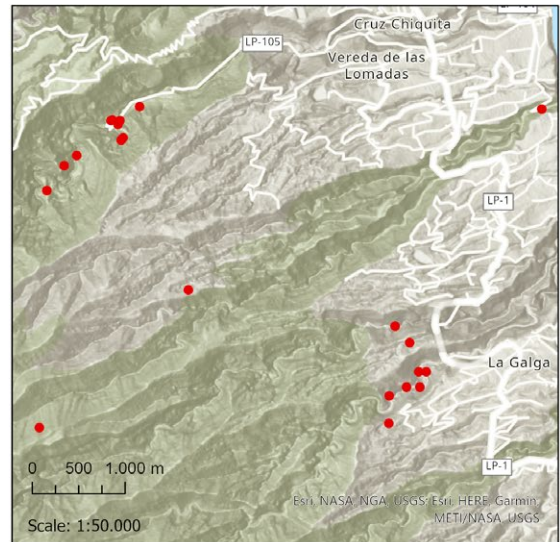
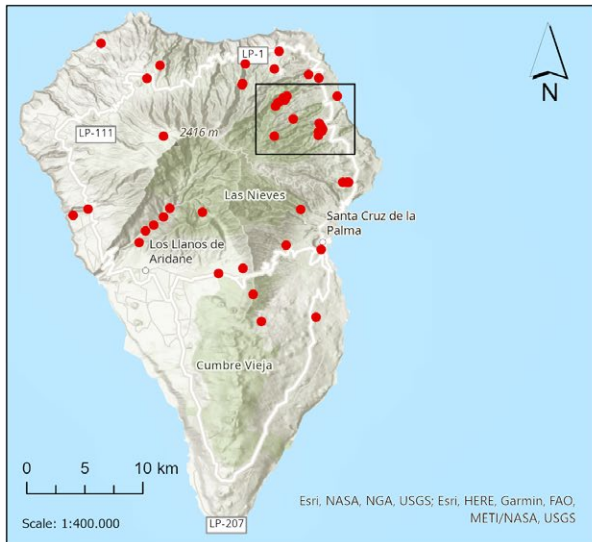
Figure 20 Recent records (1999–2021) of *Pieris cheiranthi*. (The data are based on: Escobés R, iNaturalist, Monasterio León Y, observation.org, Wiemers M. and ZERYNTHIA Association)



**Legend**

- Validated records from Escobés R, iNaturalist, Monasterio León Y, observation.org, Wiemers M & ZERYNTHIA Association

Figure 21 Recent records (1999–2021) of *Pieris cheiranthi* on Tenerife. (The data are based on: Escobés R, iNaturalist, Monasterio León Y, observation.org, Wiemers M and ZERYNTHIA Association)



Zoom-in of rectangle

**Legend**

- Validated records from Escobés R, iNaturalist, Monasterio León Y, observation.org, Wiemers M & ZERYNTHIA Association.

Figure 22 Recent records (1999–2021) of *Pieris cheiranthi* on La Palma. (The data are based on: Escobés R, iNaturalist, Monasterio León Y, observation.org, Wiemers M and ZERYNTHIA Association)

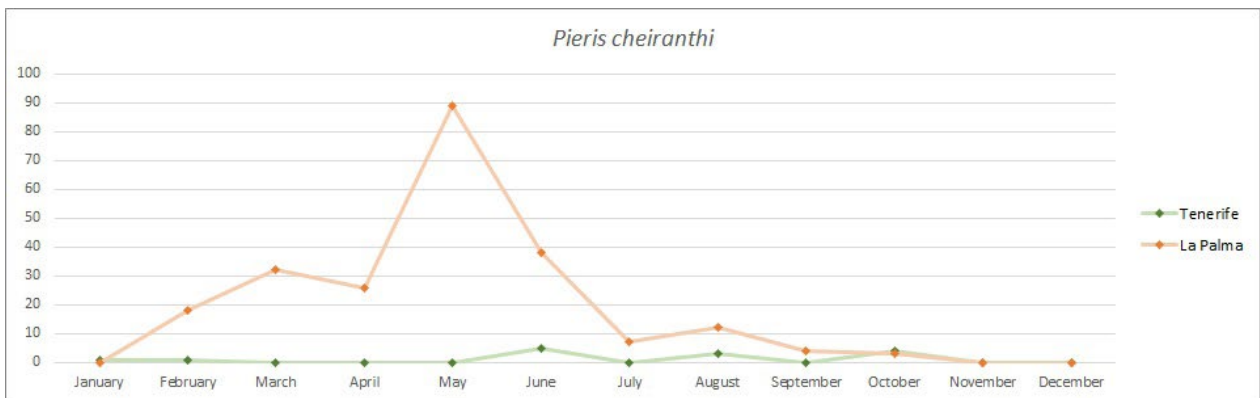


Figure 23 Phenology and abundance of *Pieris cheiranthi* in Tenerife and La Palma from data obtained by volunteers in the monitoring programme carried out by the ZERYNTHIA Association with the support of the island councils. The data for Tenerife cover the period 2017–2021. The data for La Palma reflect only the year 2021. (Graphic: Ruth Escobés. <https://www.asociacion-zerynthia.org/seguimiento-diurnas>)

## Habitat and resource assessment

The Canary laurel forest is a unique habitat of numerous Canary endemic species. Annual rainfall in the forest is between 500 and 1,200 mm, the average annual temperature is between 13 and 18°C, frost only occurs near the highest elevations (Del Arco Aguilar & Rodríguez Delgado, 2018). Fernández-Palacios *et al.*, (2011) emphasise that the laurel forest occupies only 12.5% of its potential area in Macaronesia (Table 1). Within the former range of *P. cheiranthi*, large

areas of laurel forest are still found on La Palma (6,000 ha), La Gomera (4,600 ha) and Tenerife (4,000 ha). However, this represents just 30% of the original cover on La Palma, 52% on La Gomera and 10% on Tenerife (Table 1). Deforestation has probably started with human land use during the first millennium BCE on the Canaries. In the 15<sup>th</sup> century, most of the laurel forest (especially on Gran Canaria) disappeared due to agriculture (Fernández-Palacios *et al.*, 2011).



Table 1 Potential (i.e. pre-human colonisation) and present distribution of the Macaronesian laurel forest (Fernández-Palacios et al., 2011)

Island	Potential area (thousands of ha)	Present area (thousands of ha)	Potential %
Gran Canaria	20	0.2	1
Tenerife	40	4	10
La Palma	20	6	30
La Gomera	9	4.6	52
El Hierro	6	2.5	42
Total Canaries	105	19	18
Madeira	60	15	25
Azores	200	6	3
Total Macaronesia	365	40	12.5

Wildfires regularly occur on the Canary Islands, but the fire pattern has significantly changed during the last century (Molina-Terrén *et al.*, 2016). Since the 1960s, fire intervals have become larger, but fire sizes have become much greater. Höllermann (2000) highlights that most fires have an anthropogenic origin. The peak is during the arid season from July to September. Even though the laurel forest is naturally wet and cloudy, it is also sensitive to fires due to progressive degradation and destruction (Höllermann, 2000). For example, a large wildfire in 2012 has severely affected the laurel forests of La Gomera with 750 ha being burnt (Notario del Pino *et al.*, 2015). In August 2020 there was another wildfire in Garafía (north of La Palma) that affected 1,200 ha.

Del Arco Aguilar and Rodríguez Delgado (2018) describe a predictable rise in temperature and a decrease in precipitation as a result of climate change. According to the authors, many species probably will not adapt (depending on, e.g. the species phenotypic capacity, migratory capacity, its degree of tolerance to change, longevity, production and type of diaspore, competitiveness, habitat loss, degree of fragmentation) to the new conditions. Moreover, extreme weather events (storms, droughts, heat waves) may threaten laurel forests (Del Arco Aguilar & Rodríguez Delgado, 2018). *Pieris cheiranthi* is also found in wet cliffs outside the laurel forest (Wiemers, 1995), suggesting that it is more a species of the forest edge rather than the interior. However, it still probably requires a cool and humid climate.

## Threat analysis

The main threat for *Pieris cheiranthi* is the anthropogenic destruction of habitat (van Swaay, 2021a). As the species is linked to humid areas of monteverde, the degradation of its habitat is the main threat. Although the habitats with native vegetation where *P. cheiranthi cheiranthi* is found have not suffered high degradation in recent decades, some authors highlight elements such as house constructions, over-extraction of

water, with the replacement of traditional water channels by plastic tubes (Rowlings, 2012; Wiemers, 2003). This reduces the availability of water for plants like *Crambe spp.* Monasterio *et al.*, (2011) detected discharges of garbage and water with possible pollutants in the Barranco de Ruíz, originating from the surrounding houses. Wildfires may also pose a substantial threat to the species (Figure 24). These are further fuelled by



climate change, which has increased the risk of droughts in the Canary Islands. Climate change might also have direct effects on the butterflies, particularly on the development of eggs and caterpillars or the availability of food plants.

The habitat in some areas has been reduced due to the planting of alien tree species, such as *Pinus radiata* and *Eucalyptus* spp., both for the exploitation of their wood and to hold the soil and prevent erosion. In Tenerife, the island council approved in 2020 a plan to remove the *Pinus radiata* from protected natural areas, so this action will allow the recovery of traditional vegetation.

A specific threat to *P. cheiranthi* is the introduced non-native parasite *Cotesia glomerata* (Braconidae, Hymenoptera) (Lozan et al., 2008). The samples collected in La Palma were genetically very similar to those of the European continent, suggesting a recent introduction from Europe (Lozan et al., 2008). Lozan et al., (2008) studied two colonies of *P. cheiranthi*: the first colony was near La Galga (n = 30) in a marginal laurel forest. Half (n = 15) of the caterpillars were parasitised. The habitat of *C. glomerata* is linked to sunny, exposed and agricultural areas (Lozan et al., 2008) which could pertain to the marginal laurel forest. The second colony of *P. cheiranthi* (n = 25) was near Los Tilos in the centre of the laurel forest and no caterpillars were parasitized. Lozan et al., (2008) emphasise the coherence of the parasitised caterpillars and the habitat and its importance for the protection of the butterflies' natural habitat to avoid the distribution of *C. glomerata*. It is likely that the parasite was already introduced some decades ago as Pinker

(1968) already documents the existence of high rates of parasitism (literally hundreds of pupae). In addition to the impact of this parasite, other pathogens could be introduced in the future through the import of food or other goods.

Illegal capture of specimens by collectors is usually not a significant factor for most lepidopterans, given their reproductive capacity. However, in the case of species with a very limited distribution and small population size (as in Tenerife), it does at least need to be mentioned. It is possible to find advertisements and offers of *P. cheiranthi cheiranthi* on the internet for sale, both specimens in collection and immature stages for breeding in captivity.

The early detection of possible imports of cabbage with immature stages of *Pieris brassicae* is of particular importance. This species is very common on the European continent, but has not been recorded on Tenerife so far. In the event of it accessing the island, it could compete with *P. cheiranthi* and even hybridise naturally, altering the genetics or even genetically displacing this endemic species. A similar case has occurred in Madeira with *Pararge xiphia* (similar to the Canarian *P. xiphoides*) after the accidental arrival of *Pararge aegeria* from the European continent (Bland & Lacey, 2020; Jones et al., 1998).

The impacts of pesticides on Canarian pollinators is inadequately understood. As the target species are affiliated with forest vegetation, direct pesticide effects are unlikely, but spill-over from adjacent agricultural areas may occur.

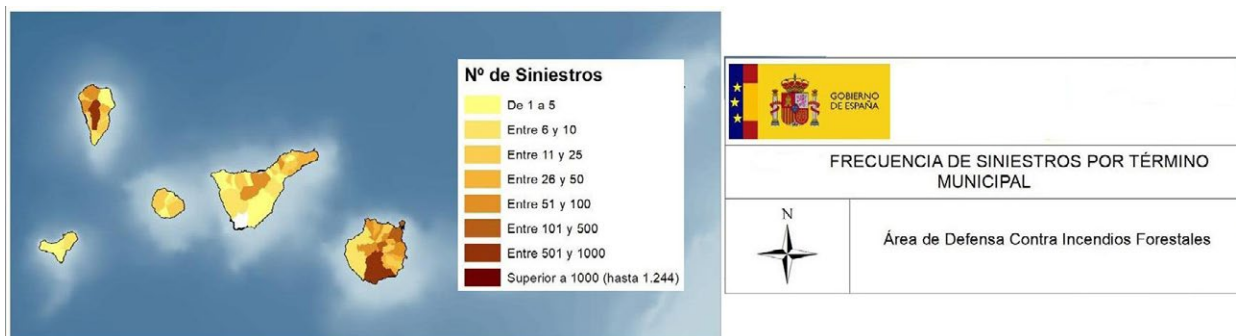


Figure 24 Historical frequency of fires in each municipality. Dark colours indicate the occurrence of a greater number of fires. (Image adapted from: Government of Spain. Forest Fire Defense Area. [https://www.miteco.gob.es/es/biodiversidad/estadisticas/Incendios\\_default.aspx#prettyPhoto](https://www.miteco.gob.es/es/biodiversidad/estadisticas/Incendios_default.aspx#prettyPhoto))

Table 2 Overview of the major threats to *P. cheiranthi*

Threat	Timing	Knowledge	Presumed impact
Water extraction	Ongoing	Low	High
Wildfires	Ongoing	Medium	Low
<i>C. glomerata</i>	Ongoing	Medium	High
House constructions	Past	High	Medium
Climate change	Ongoing	Medium	High
Pesticides	Ongoing	Low	Medium
Introduction of <i>P. brassicae</i>	Future	Low	High
Collection	Ongoing	Medium	Low
Introduction of new pathogenic organisms	Future	Low	Low
Habitat reduction due to the use of alien forest species or alien species	Past	High	Medium

# Canary Brimstone (*Gonepteryx cleobule*)

## Species description

### Systematics / taxonomy

The Canary Brimstone, *Gonepteryx cleobule* (Hübner, 1831) (Figures 25–27), is another endemic butterfly species on the Canary Islands (van Swaay *et al.*, 2010a). It belongs to the family Pieridae, subfamily Coliadinae (Wiemers *et al.*, 2018). Three subspecies of *G. cleobule* have been described, but their status and validity are disputed: (1) *G. c. cleobule* Hübner, 1825 from Tenerife (Figure 25), (2) *G. c. eversi* Rehnelt, 1974 from La Gomera (Figure 27a, b) and (3) *G. c. palmae* Stamm, 1963 from La Palma (Figure 26a, b). Separate species status was proposed by Rehnelt (1974a, b, 1989) as well as Ziegler and Jost (1990), but recently this division into distinct species has been doubted (Wiemers, 1995; Wiemers *et al.*, 2018). Brunton and Hurst (1998)

found some genetic differentiation between the populations on La Gomera and Tenerife/La Palma. However, it remains unclear whether this differentiation justifies a taxonomic subdivision into separate species. In addition to *G. cleobule*, the genus contains four more species in Europe: (1) *G. rhamnii* (Linnaeus, 1758), which occurs in NW Africa, Europe, Turkey to West Siberia and Mongolia; (2) *G. cleopatra* (Linnaeus 1767), which is found in NW Africa, S Europe, Turkey and the Middle East; (3) *G. maderensis* Felder, 1862, which is endemic to Madeira; (4) *G. farinosa* (Zeller, 1847), which occurs in SE Europe via W Asia to Tajikistan (Tolman & Lewington, 2012; Wiemers *et al.*, 2018). Recent phylogenetic studies (Figure 28) suggest that *G. cleobule* is closely related to *G. cleopatra* and *G. rhamnii* (Dapporto *et al.*, 2019).



Figure 25 *Gonepteryx cleobule cleobule* (Tenerife). Male and female. (Photo: Yeray Monasterio)



Figure 26A-B *Gonepteryx cleobule palmae* (La Palma). (Photos: Yeray Monasterio)





Figure 27A-B *Gonepteryx cleobule eversi* (La Gomera). (Photos: Yeray Monasterio)





Figure 28 Extract of the multi-locus phylogenetic tree for all European butterfly species. (Based on Dapporto et al., 2019)

Even though no other *Gonepteryx* species is found on the Canary Islands, adult butterflies may be mistaken with *Catopsilia florella*. The eggs of *G. cleobule* are pale yellow with eight longitudinal ribs (Wiemers, 1995) (Figure 29). The caterpillars are green with white lateral stripes bordered ventrally by fine yellow lines (Wiemers, 1995) (Figure 30–32). The pupa is brown at the head spine, the origins of the wings and small spots across the body and the outer border of the wing sheath are visible (Wiemers, 1995). Moreover, Wiemers (1995) reports about white lateral stripes being discernible on the pupas' green basis colour.



Figure 29 Egg of *G. cleobule* on *Rhamnus crenulata* on Tenerife. (From: Lepiforum e.V., 2021) © Wolfgang Langer.



Figure 30 First instar of the *Gonepteryx cleobule* caterpillar on *Rhamnus glandulosa* (Tenerife). (Photo: Yeray Monasterio)



Figure 31 Intermediate instar of the *Gonepteryx cleobule* caterpillar on *Rhamnus glandulosa* (Tenerife). (Photo: Yeray Monasterio)



Figure 32 Fully developed caterpillar of *Gonepteryx cleobule* on Tenerife. (From: Lepiforum e.V., 2021) © Reiser.



Figure 33 Fully developed caterpillar of *Gonepteryx cleobule* on La Palma. (Photo: Yeray Monasterio)

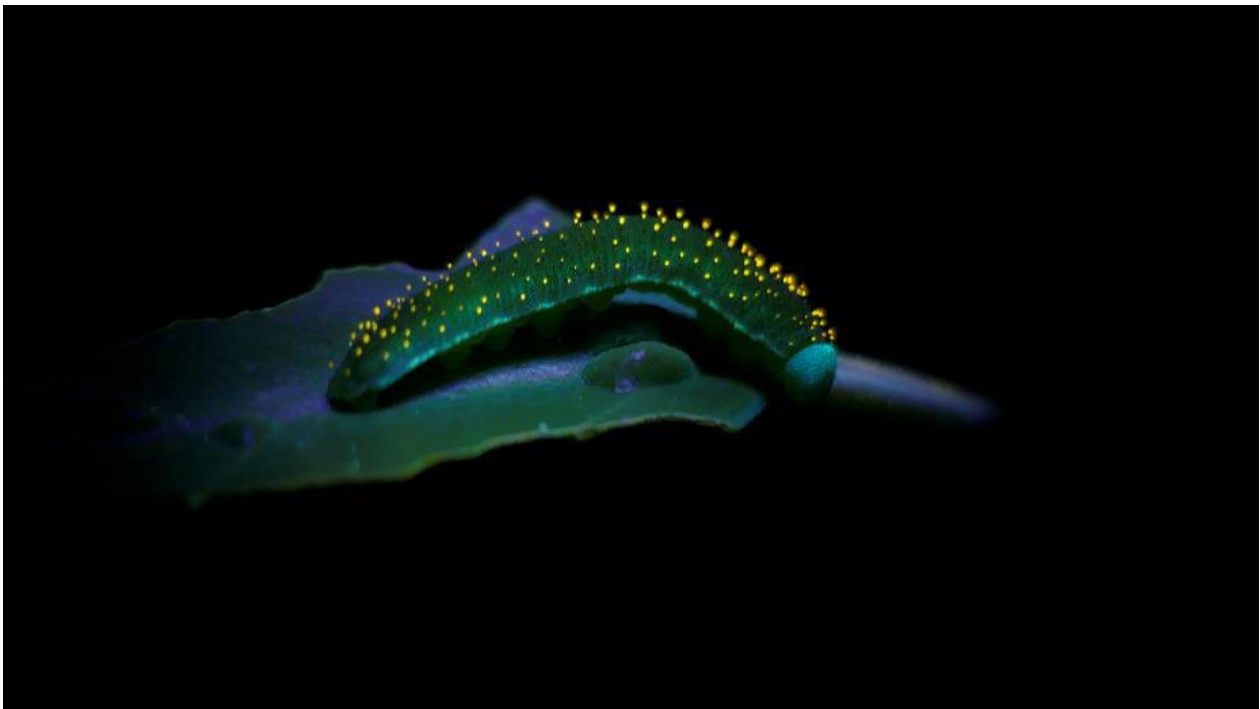


Figure 34 Response to artificial ultraviolet light of a fully developed caterpillar of *Gonepteryx cleobule* on La Palma. (Photo: Yeray Monasterio)





Figure 35 Pupa of *Gonepteryx cleobule* on La Palma. (Photo: Yeray Monasterio)



Figure 36 *Rhamnus glandulosa* in Tenerife. (Photo: Yeray Monasterio)

## Biology and ecology

*Gonepteryx cleobule* is listed as Vulnerable on the IUCN Red List of Threatened Species (van Swaay *et al.*, 2010a). Its life cycle is not known completely, but the species has been recorded throughout the year (Tolman & Lewington, 2012). Wiemers (1995) concludes that the butterflies breed perennially. It is not resolved whether the species has a winter diapause and if more than one generation per year might breed

(Wiemers, 1995). The adults deposit a single egg per host plant (Middleton-Welling *et al.*, 2020a, b) (Figure 29). Eggs and caterpillars feed on *Rhamnus crenulata* (endemic to the Canary Islands) and *Rhamnus glandulosa* (Rhamnaceae) (van Swaay *et al.*, 2010a; Ziegler & Jost, 1990). *Rhamnus crenulata* is found at the boundary between succulent bush vegetation and laurel forest, while *Rhamnus glandulosa* grows inside laurel forest (Wiemers, 1995) (Figure 37).



Figure 37 Egg of *Gonepteryx cleobule* on *Rhamnus glandulosa* (Tenerife). During summer *G. cleobule* is found at elevations between 1,000 and 1,500 m (up to 2,000 m). In winter it also occurs at lower elevations (van Swaay *et al.*, 2010a). The species flies in bright glades in the laurel forests (Tolman & Lewington, 2012) but is also found in other forest types (van Swaay *et al.*, 2010a). (Photo: Yeray Monasterio)

## Functions and values

Even more than *P. cheiranthi*, the Canary Brimstone (*Gonepteryx cleobule*) is a suitable flagship species. This is mainly due to its beautiful coloration compared to the Canary Islands Large White. Even though it may be less threatened than *P. cheiranthi*, conservation measures for

this species may also help other forest insects. As a pollinator, *Gonepteryx cleobule* visits many flowering plants and is not specialised. It can be regularly found on Arabian pea (*Bituminaria bituminosa*), but also on blackberries, thistles or sow thistles.



## Historical account

Figure 38 shows the historical distribution of *Gonepteryx cleobule*. Van Swaay *et al.*, (2010a) estimated a population decline of 10% (probably

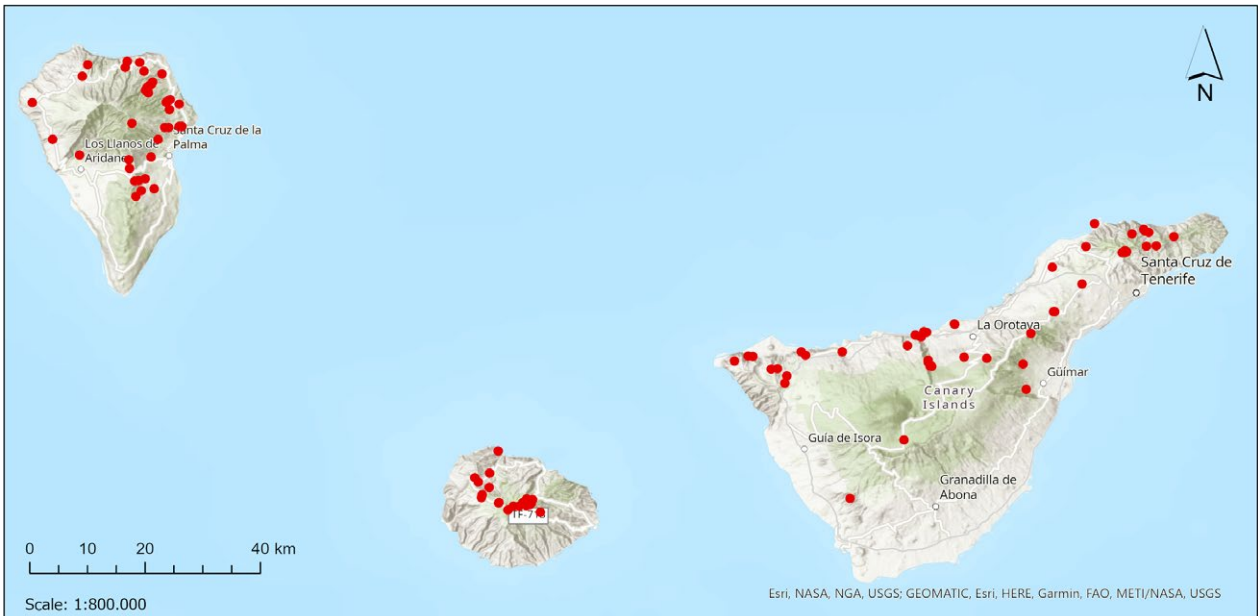
over 10 years) and inferred a continuing decline of the number of mature individuals from the reduction of the habitat.



### Legend

- ◆ 1975-1994
- ▣ 1800-1974

Figure 38 Historical records (1800–1994) of *Gonepteryx cleobule*. (Data adapted from Wiemers, 1995)



### Legend

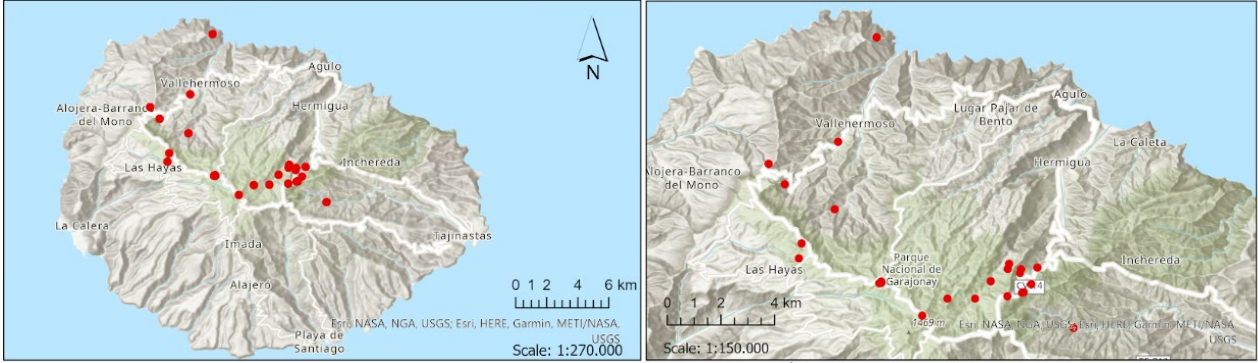
- Validated records from Escobés R, iNaturalist, Monasterio León Y, observation.org, Wiemers M & ZERYNTHIA Association.

Figure 39 Recent records of *G. cleobule* (1999–2021). (The data are based on Escobés R, iNaturalist, Monasterio León Y, observation.org, Wiemers M and ZERYNTHIA Association)

## Current distribution and demography

The current distribution of the species is shown in Figures 39–42. The extent of occurrence of *Gonepteryx cleobule* has been estimated as

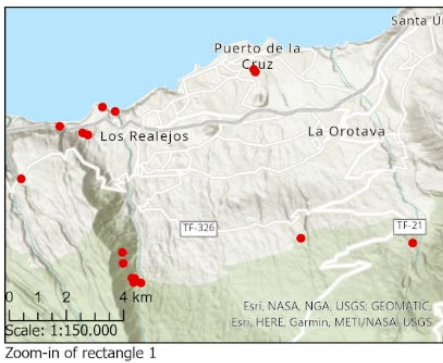
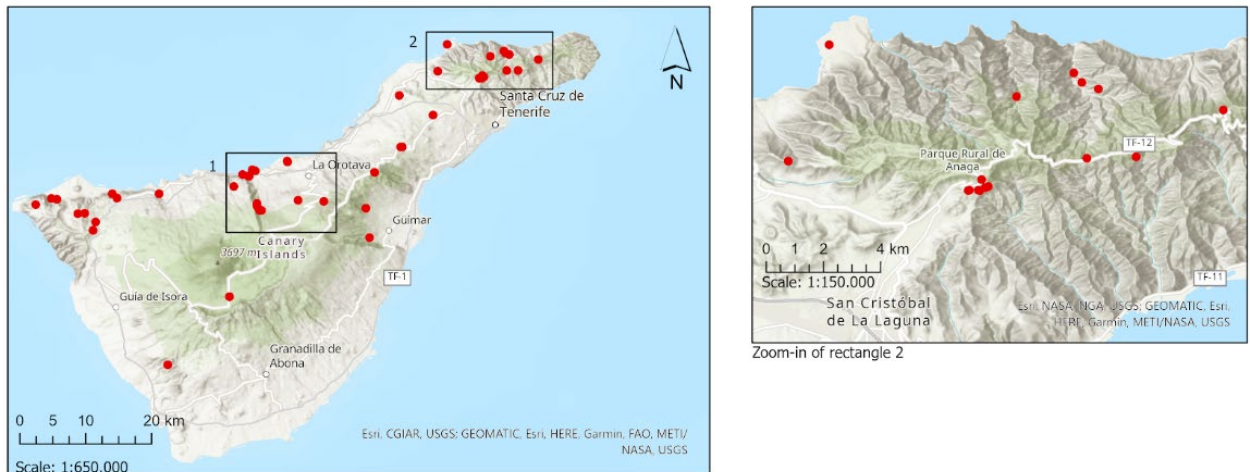
< 5,000 km<sup>2</sup> (van Swaay *et al.*, 2010a). The number of locations is estimated at less than ten (van Swaay *et al.*, 2010a).



### Legend

- Validated records from Escobés R, iNaturalist, Monasterio León Y, observation.org, Wiemers M & ZERYNTHIA Association.

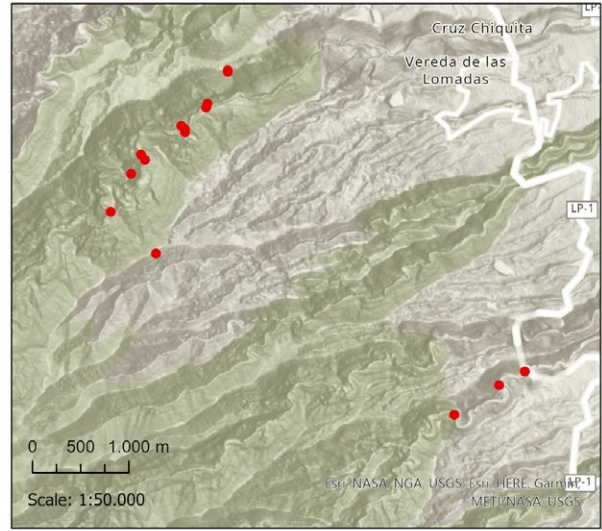
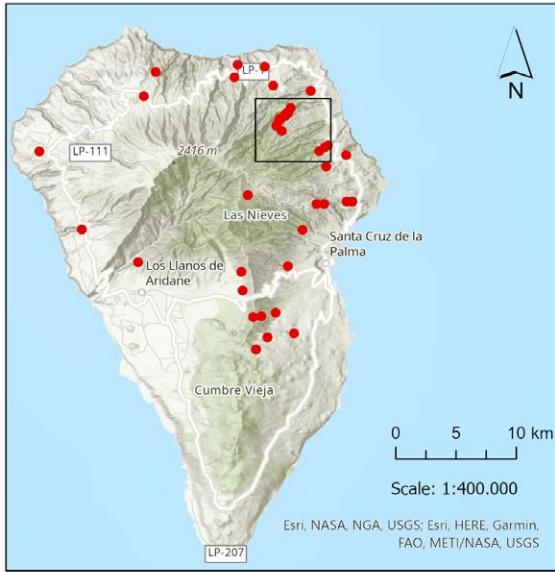
Figure 40 Current distribution of *G. cleobule* (1999–2021) on La Gomera. (The data are based on: Escobés R, iNaturalist, Monasterio León Y, observation.org, Wiemers M. and ZERYNTHIA Association)



### Legend

- Validated records from Escobés R, iNaturalist, Monasterio León Y, observation.org, Wiemers M & ZERYNTHIA Association.

Figure 41 Current distribution of *G. cleobule* (1999–2021) on Tenerife. (The data are based on: Escobés R, iNaturalist, Monasterio León Y, observation.org and Wiemers M and ZERYNTHIA Association)



Zoom-in of rectangle

**Legend**

- Validated records from Escobés R, iNaturalist, Monasterio León Y, observation.org & Wiemers M.

Figure 42 Current distribution of *G. cleobule* (1999–2021) on La Palma. (The data are based on: Escobés R, iNaturalist, Monasterio León Y, observation.org and Wiemers M)

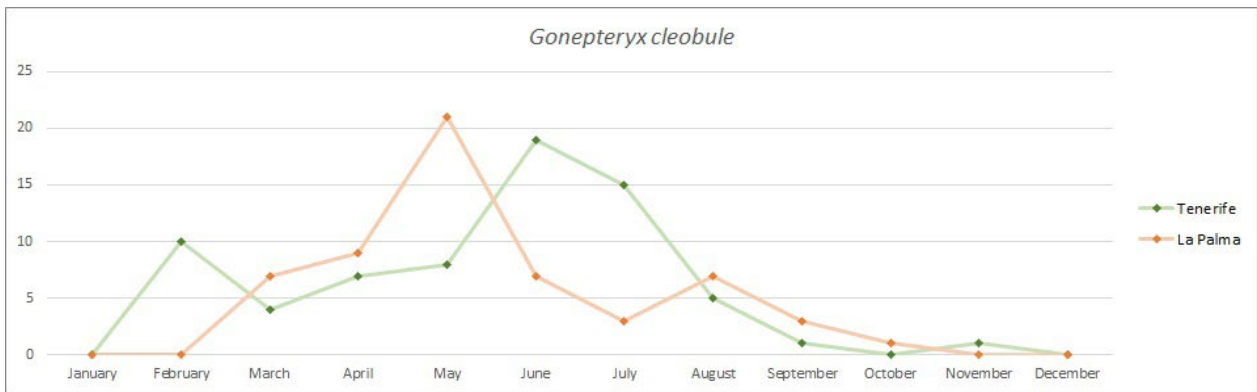


Figure 43 Phenology and abundance of *Gonepteryx cleobule* in Tenerife and La Palma from data obtained by volunteers in the monitoring programme carried out by the ZERYNTHIA Association with the support of the island councils. The data for Tenerife cover the period 2017–2021. The data for La Palma reflect only the year 2021. (Graphic: Ruth Escobés. <https://www.asociacion-zerynthia.org/seguimiento-diurnas>)

## Habitat and resource assessment

Adults of *G. cleobule* can be found in different elevations and in different habitat types depending on the season (Ziegler & Jost, 1990). In spring, *G. cleobule* is found at sea level and in elevations between 500 and 1,000 m and flies in the laurel forest and along sheer, shrubby and sun-exposed rocks (Ziegler & Jost, 1990). In summer, the species occurs at higher altitudes up to 2,000 m and flies mainly in the transition area of laurel–pine forest zones (Ziegler & Jost, 1990). The Canary Pine woodland is generally

drier than the Laurel Forest zone. It is characterised by a precipitation of 450–550 mm and an average temperature of 11–15°C (Del Arco Aguilar *et al.*, 2010). Pine woodlands are less threatened on the Canary Islands, even though they are also influenced by human impacts (e.g. for firewood, building timber or agriculture). Due to the forestry use of pine woodlands, they have been expanded and also planted on islands where the Canary Pine did not originally occur (e.g. La Gomera).

## Threat analysis

Destruction of the laurel forests is the major threat to *G. cleobule*, even though large parts of this habitat are legally protected (van Swaay *et al.*, 2010a). Tourist resorts and illegal buildings especially alongside roads or close to settlements are impacting laurel forest habitats (van Swaay *et al.*, 2010a). Moreover, van Swaay *et al.*, (2010a) underline that accidentally and intentionally set for livestock grazing, crop planting, timber and real estate speculation impact the laurel forest. A major recent threat is the increasing number

and size of wildfires. The occurrence of the larval food plants might be a bottleneck factor in some places, because they are not always common in laurel forests. Climate change might increasingly impact the habitat of the species, particularly through droughts and weather extremes, but also from habitat changes caused by the increasing temperatures. While the habitat of *G. cleobule* is not directly affected by pesticides, spill-over from adjacent agricultural areas may also impact the species.

Table 3 Overview of the major threats to *G. cleobule*

Threat	Timing	Knowledge	Presumed impact
Wildfires	Ongoing	Medium	Medium
Rural and tourism development	Past	High	Medium
Climate change	Ongoing	Medium	High
Pesticides	Ongoing	Low	Medium
Habitat reduction due to the use of foreign forest species or alien species	Past	High	Medium



# Canarian Laurisilva Bee (*Lasioglossum chalcodes*)



Figure 44 *Lasioglossum chalcodes* in Tenerife. (Photo: Domingo Sosa)

## Species description

### Systematics / taxonomy

*Lasioglossum* (*Lasioglossum*) *chalcodes* (Brullé, 1839) is endemic to the central and western islands of the Canary Islands. It comprises 4 subspecies: *Lasioglossum c. chalcodes* (Brullé, 1839) distributed on El Hierro and Tenerife, *Lasioglossum c. canariense* (Ebmer, 1993) on Gran

Canaria, *Lasioglossum c. caldereae* (Ebmer, 1993) endemic on La Palma, and *Lasioglossum c. gomera* (Warncke, 1975) from La Gomera.

### Biology and ecology

The species has been found in a variety of habitats but appears to prefer the moist forest zone.

## Functions and values

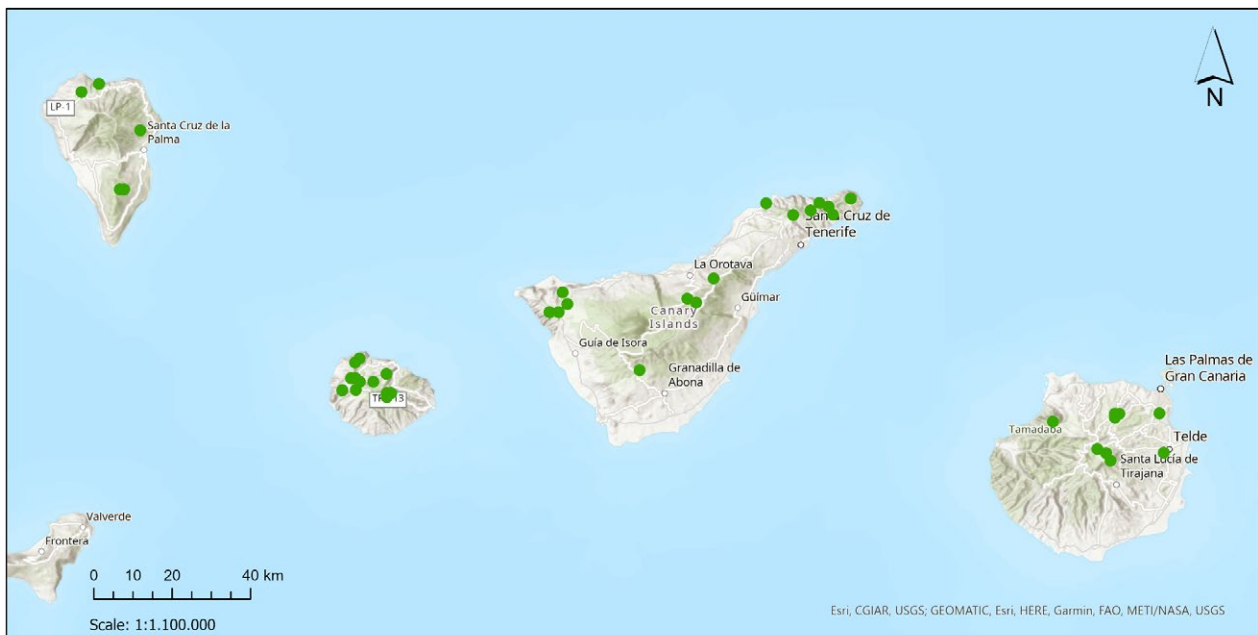
Wild bees are among the most important pollinators on our planet (Ollerton, 2017). According to Ollerton *et al.*, (2011) 78–94% of wild plants depend on pollinators. Pollination by wild insects is known to generate large economic benefits (Gallai *et al.*, 2009). Pollinators are also bioindicators of environmental stress which can reflect introduced competitors, diseases, parasites, predators, pesticides or habitat modification (Kevan, 1999). *Lasioglossum chalcodes* is polylectic and been observed visiting preferentially Asteraceae

(*Andryala pinnatifida*, *Calendula* and *Senecio* sp.), Lamiaceae (mainly *Cedronella canariensis*) and Crassulaceae (*Aichryson laxum*). Due to its distribution, it is one of the pollinators of economically important crops such as apple, kiwi and vegetables. It has been recorded as one of the pollinators of apple orchards in Tenerife and La Palma (unpublished data). Adults are active throughout the year, although with a peak of abundance from December to June.

## Historical account

The species is endemic to central and western Canary Islands, restricted to humid areas. It is mainly found at higher elevations on northern slopes of Gran Canaria, Tenerife, La Gomera and

La Palma (Figure 45). Figure 46 shows a map of the inferred distribution based upon climate niche modelling.



### Legend

- Historical records (1981-1990) from Hohmann *et al.* (1993)

Figure 45 Historical records (1981–1990) of *Lasioglossum chalcodes*. (Data adapted from Hohmann *et al.*, 1993)

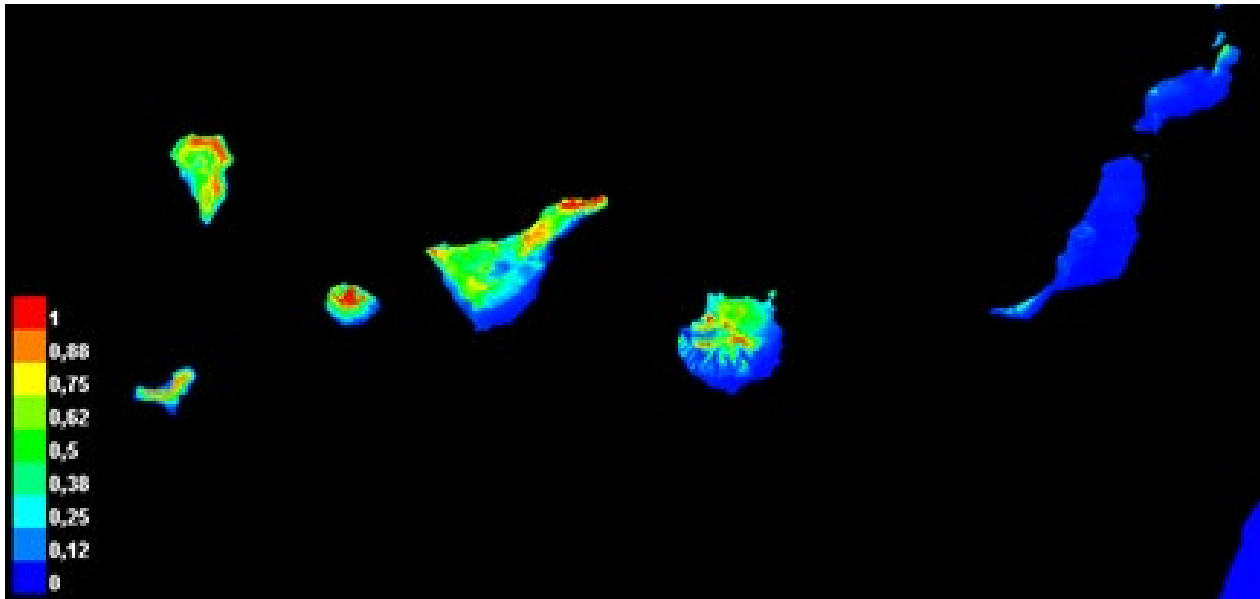


Figure 46 Potential distribution map of *Lasioglossum chalcodes* based upon species distribution modelling.

## Current distribution and demography

Data on the distribution and population status of *Lasioglossum chalcodes* is scarce. It is listed as Least Concern on the IUCN Red List based on its suspected stable populations, its preference for a wide variety of habitats, and the lack of known threats to the species (Kemp *et al.*, 2013). Based on known distribution localities, the estimated area of occupancy (AOO) was 24 km<sup>2</sup> and the extent of occurrence (EOO) less than 12,850 km<sup>2</sup>. A more

accurate estimation of its potential distribution based on SDM showed a restricted distribution in the humid habitats with an AOO of 1,204 km<sup>2</sup> and an EOO of 21,759 km<sup>2</sup>. Field surveys have shown that it is not common, however, the population trend remains unknown. Further research should be conducted on the population status, trends and future threats to this species. Figure 47 shows some recent records of the species.



### Legend

- Records of Carlos Ruiz Carreira (2019)

Figure 47 Recent records (2019) of *Lasioglossum chalcodes*. (Data from: Carlos Ruiz Carreira)

## Habitat and resource assessment

*Lasioglossum chalcodes* is one of the few bee species associated with laurel forests. Its distribution area overlaps with that of the laurel forest

or degraded areas of the laurel forest (Hohmann *et al.*, 1993), and thus may benefit from conservation action in this habitat.

## Threat analysis

The most likely threat to the species is the transformation of its habitat by agriculture or forestry. Additionally, it may be threatened by exotic wild bee species (Russell & Kaiser-Bunbury, 2019), such as *Bombus ruderatus*, whose populations have spread on the northern and eastern slopes of Tenerife and La Palma (Pérez & Hernández,

2012). Climate change is likely to affect this species as well, either indirectly via habitat shifts or directly via droughts or weather extremes. The role of pesticides on the population trend of this species is poorly understood. While the forest habitat may not be affected by pesticides, spill-overs from adjacent agricultural areas may occur.

Table 4 Overview of the major threats to *L. chalcodes*

Threat	Timing	Knowledge	Presumed impact
Wildfires	Ongoing	Low	Low
Habitat reduction	Past	Low	Low
Climate change	Ongoing	Low	Medium
Pesticides	Ongoing	Low	Medium
Alien bee species	Ongoing	Low	Unknown



# Laurisilva Hoverfly (*Heringia adpropinquans*)

## Species description

### Systematics / taxonomy

The species of the genus *Neocnemodon* have at various times been consigned to *Heringia*, but recent genetics work argues for separation of *Heringia* from *Neocnemodon* (Vujić *et al.*, 2013). There are then only two certain European

*Heringia* species recognised as present, *Heringia heringi*, present in the continental part of Europe and the Canary Isles endemic, *Heringia adpropinquans* (Speight, 2020) (Figure 48 a-c). Both species are very similar (*Heringia heringi*, Figure 49. a-b) and differ in the structure of the male genitalia.



Figure 48A-C *Heringia adpropinquans*, Santa Cruz de Tenerife (a-b: © Gustavo Peña – some rights reserved (CC BY-NC), c: © djbich, some rights reserved (CC-BY-NC))



Figure 49A-C *Heringia heringi*: A. habitus, male, dorsal view; B. head, male, lateral view; C. head female, lateral view. (Photos: Sander Bot)

### Biology and ecology

The preferred environment of this species is Laurisilva forest (Báez, 1977). Based on Speight (2020), there is no data about adult hab-

its and flower visitation. The flight period for adults is May and July/August. Developmental stages have not been described, but larvae of the genus *Heringia* and related genera are aphidophagous.

## Functions and values

Syrphids are among the most important pollinators on our planet, but less well studied than butterflies or wild bees. Syrphids are also known as bioindicators of habitat modification. While

the pollination service of *Heringia adpropinquans* has not been studied in detail, this species is likely to contribute to pollination of wild flowers.

## Historical account

There have been no targeted studies to find more individuals, but unlike *Eumerus purpureus* and other species endemic to the Canary Islands, recent research on the islands has not provided

any new specimen based on a couple of surveys done in the Canary Islands. The known records of the species are shown in Figure 50 (Vujić & Šebić, 2021).

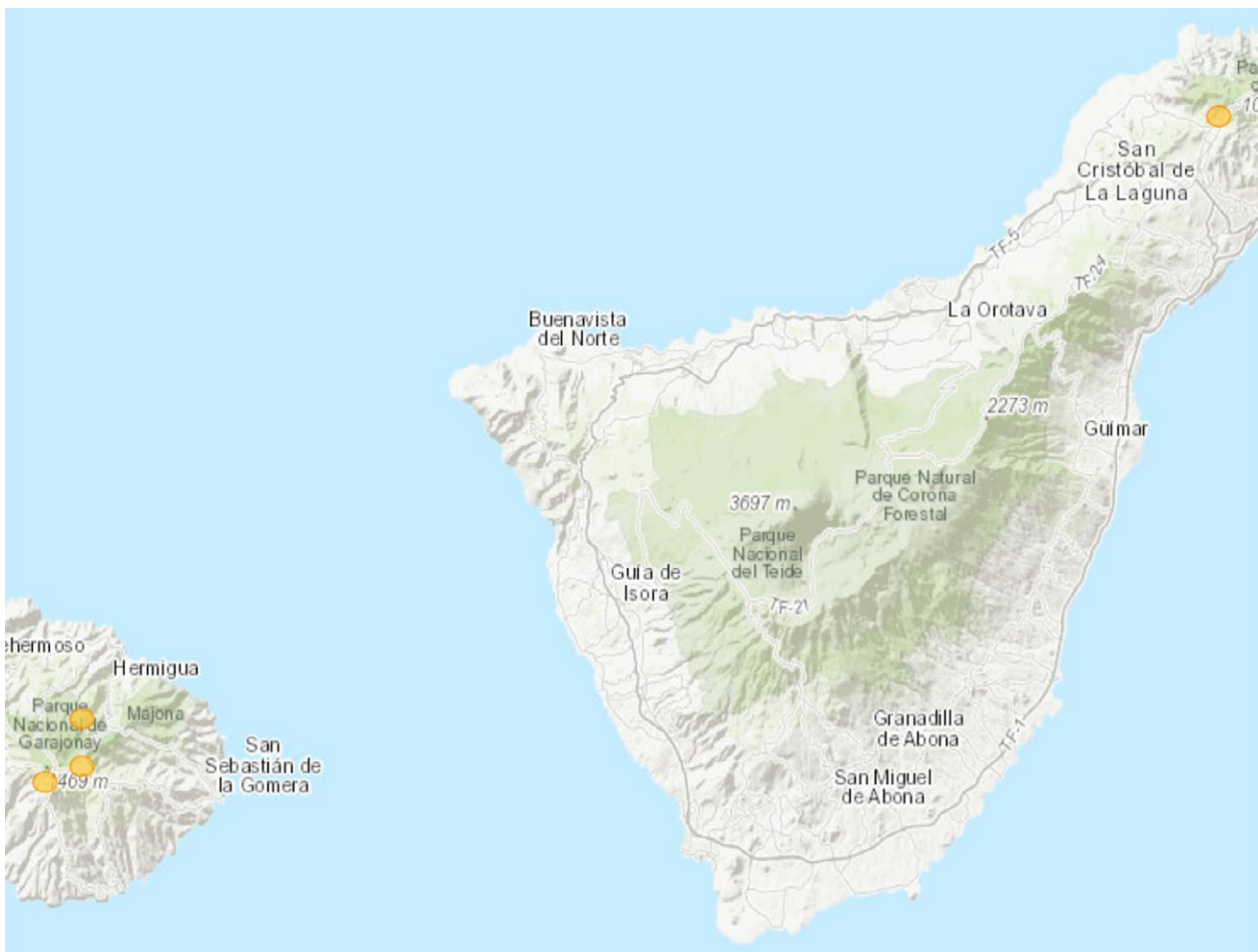


Figure 50 Records of *Heringia adpropinquans* on the Canary Islands.



## Current distribution and demography

This species is endemic to the Canary Islands. There is no data about the population trend of this species, and there are no recent records.

There are <100 specimens found, but most of them date from the beginning of the 1990s.

## Habitat and resource assessment

The species is found within the boundaries of some protected areas which are part of the Natura 2000 network and very close to national parks. However, the habitat of this species has been and still is subject to various influences. The laurel forest has been extensively exploited since the 15th century and nowadays only 11% of the original forest remains. Approximately 85% of the laurel forest is included in the Canarian

Network of Protected Areas and up to 92% within the Natura 2000 Network. Additionally, the first long-term monitoring (12 years) of the laurel forest seedlings bank in the Canary Islands revealed the high regeneration potential of the forest in well-preserved stands, indicating that probably no management interventions are required to ensure the regeneration of the forest.

## Threat analysis

The species is undergoing a continuing decline in the quality of its habitat due to human-made pressure. Based on IUCN assessment, the species is assessed as Endangered due to its very small area of occupancy (16 km<sup>2</sup>) and extent of occurrence (155 km<sup>2</sup>), a severely fragmented population with no possibility of dispersal between populations situated on two different islands, a low number of locations (2) and a continuing loss of habitat quality due to fire as the main threat (Vujić & Šebić, 2021). The conservation of the species should be based on habitat protection, and protection of the original forest,

prohibition of illegal house construction within the protected areas and regulation of other human activities. As this species inhabits laurel forests, it may be affected by direct or indirect effects of climate change. Increasing droughts and weather extremes may affect survival or development of eggs and larvae or alter the forest habitat. The role of pesticides for this species is unknown. While forest habitats may be less affected by pesticides than agricultural land, spill-over of pesticides into the habitat of *H. adpropinquans* may occur.

Table 5 Overview of the major threats to *Heringia adpropinquans*

Threat	Timing	Knowledge	Presumed impact
Wildfires	Ongoing	Medium	High
Forestry (habitat destruction)	Ongoing	Medium	High
Climate change	Ongoing	Medium	Medium
Pesticides	Ongoing	Low	Medium

# Conservation planning

---

To develop a conservation strategy for the four target pollinator species, the approach of the IUCN Species Survival Commission was adopted according to the IUCN Guidelines for Species Conservation Planning (IUCN SSC Species Conservation Planning Sub-Committee, 2017) and the Species Conservation Planning Principles and Steps (CPSG, 2020). A draft strategy was prepared by a core group of stakeholders and discussed and amended during a participatory workshop, involving species specialists and planners, state government agencies, managers, researchers, NGOs and other stakeholders.

The workshop was held on 22 and 23 November 2021 with one 4-hour long session each day. The

first day started with introductions to IUCN and the project, and to the strategic conservation planning methodology. During the first day, the biology and conservation of the four key species were introduced as well as their historical and current distribution trends. Finally, the participants discussed and modified the draft vision, goals and objectives of the action plan developed by the core group together with the first major objective, research.

The second day was fully dedicated to discussing the remaining major objectives, such as conservation management, monitoring, legal protection, outreach and funding. The workshop agenda is given in Annex I.

# Conservation Action Plan

## Vision

The Canary Islands maintain large, well connected areas of native laurel forest vegetation, providing adequate, sustainable habitat for endemic pollinators, including the Canary Islands Large White, the Canary Brimstone, the Canarian Laurisilva Bee and the Laurisilva Hoverfly. These pollinators are flagship species for Canarian insect conservation and have self-sustaining, healthy populations, so that future generations can enjoy them and benefit from the services they provide. Local communities are aware of their importance and the threats to their populations and engage in conservation action.

The vision was carefully worded to reflect the following points:

- (i) “large, well connected areas of native laurel forest”: Laurel forests occupy only 12.5% of their original range on the Canary Islands; species affiliated with these ecosystems are threatened by habitat loss and fragmentation; increasing habitat connection requires restoration of habitat, particularly in areas with larger gaps in forest vegetation.
- (ii) “providing adequate, sustainable habitat”: Habitat management is key to ensure the provision of adequate habitat and the survival of threatened species, this includes management of wildfires, water extraction, invasive species, tourism, forestry, agriculture and development.
- (iii) “endemic pollinators”: The Canary Islands are known for their high number of endemic species, including endemic pollinators, for which an enhanced responsibility exists to ensure their survival.
- (iv) “flagship species for Canarian insect conservation”: Insects are often unknown to the public, so awareness needs to be enhanced.
- (v) “self-sustaining, healthy populations”: This highlights the aim to secure existing populations and improve the status of threatened pollinator species; a population is considered self-sustaining if its survival is ensured with high probability over the long term.
- (vi) “future generations can enjoy them and benefit from the services they provide”: Insects, and particularly butterflies, provide multiple ecosystem services, including pollination, but they are also of high aesthetic and educational value.
- (vii) “Local communities are aware of their importance and the threats to their populations and engage in conservation action”: This highlights the local responsibility and need for increased awareness, not only of the values of pollinators, but also their main threats and the opportunity to engage in their conservation by planting host plants.



# Goals, objectives and actions

## Goal 1: Governance and protection

Governance and protection established and secured for the four selected Canary pollinators (*Pieris cheiranthi*, *Gonepteryx cleobule*, *Lasioglossum chalcodes*, *Heringia adpropinquans*), facilitating the implementation of the Conservation Action Plan.

### Objective 1.1 Governance

To establish a steering group by 2021 in order to guide and facilitate implementation of the plan and review progress regularly.

#### Actions

##### 1.1.1 Creation of a steering group

Purpose: To guarantee the implementation of all actions

Note: Regular meetings each year to review progress (more often during the first year). The steering group was established during the workshop. The members are listed below.

Who? IUCN SSC Mid Atlantic Island Invertebrate Specialist Group (MAISG) / University of La Laguna (ULL) / ZERYNTHIA / Loro Parque Fundación (LPF) / Gobierno de Canarias (GC) / Ministry for the Ecological Transition and Demographic Challenge (MITECO) / Butterfly Conservation Europe (BCE) / IUCN SSC Invertebrate Conservation Committee (ICC) / IUCN SSC Hoverfly SG (HSG)

By when? 2021

Indicator? Regular meetings

Resources required? Volunteer time

### Objective 1.2 Inclusion of pollinators in key legal documents

To add the target pollinator species (*Pieris cheiranthi*, *Gonepteryx cleobule*, *Lasioglossum chalcodes*, *Heringia adpropinquans*) to existing key legal documents of the Canary Islands and Spain, in order to set the basis for implementation of conservation action.

#### Actions

1.2.1 Motion for inclusion of laurel forest pollinators in the Biodiversity Strategy of Tenerife.

Who? ZERYNTHIA / ULL / BCE / LPF / ICC / MAISG / HSG

By when? December 2021

Indicator? Motion submitted

Resources required? Volunteer time

Note: The motion was submitted during the consultation period of the new Biodiversity Strategy (2020–2030) of Tenerife, asking for the inclusion of laurel forest pollinators in the Tenerife Biodiversity Strategy. This action was finalised in December 2021. The Local Government of Tenerife has accepted the motion and included the pollinators in the 2020–2030 Biodiversity Strategy (accessible here: <https://www.tenerife.es/documentos/medioambiente/2022EstrategiaBiodiversidadTenerife.pdf>)

### 1.2.2 Inclusion of all four target pollinator species in the Canarian Regional Catalogue of Threatened Species

Purpose: Increasing legal protection of species (either of special interest or endangered) in the Canary Islands and/or Spain, which is the necessary basis for any species conservation action

Note: Including also *P. cheiranthi benchoavensis* on La Palma

Who? ZERYNTHIA / ULL / BCE / LPF / ICC / MAISG / HSG

By when? Proposal submission 2023

Indicator? Species are listed in the Regional Catalogue of the Canary Islands

Resources required? Volunteer time

### 1.2.3 Inclusion of *Pieris cheiranthi* in the Spanish National Catalogue of Threatened Species

Purpose: Increasing legal protection (currently only protected on Tenerife)

Note: Provided it fulfils the necessary criteria

Who? ZERYNTHIA / BCE / LPF / ICC / MAISG

By when? 2026

Indicator? Species is listed

Resources required? Volunteer time

## Goal 2: Research

Research on the Canarian pollinator population status (focusing on the four selected species), to better understand the dynamics and associated drivers, to identify and understand better the present and likely future threats, and to clarify their genetic uniqueness and ecological roles.

### **Objective 2.1 Distribution and ecology**

To clarify the number of existing populations of the four Canarian pollinator species, their spatial extent and key ecological requirements (including diet, nesting requirements) in order to implement the most suitable conservation action.

### **Actions**

#### 2.1.1 Systematic survey on distribution and abundance of the four selected species on the Canary Islands (including search for *P. cheiranthi* on La Gomera)

Purpose: High quality spatial data on the current population status. This is an important basis for several other actions below!

Note: To be coordinated with any other existing monitoring activities for pollinators, including the [EU Pollinator Monitoring Scheme](#)

Who? MAISG / BCE / ZERYNTHIA / ULL / HSG

By when? 2023

Indicator? High quality map of key areas for conservation / population status

Resources required? Funding for personnel and travel costs

#### 2.1.2 Study on suitability of different *Crambe* species as host plants for *Pieris cheiranthi* on the Canary Islands

Purpose: Clarifying suitable food plants (for management or potential reintroduction on La Gomera)

Note: Field study (also check *Brassica*) on the relevant sites where the species are present

Who? BCE / ZERYNTHIA / ULL (botanists)

By when? 2024

Indicator? Assessment of suitable *Crambe* species

Resources required? Funding for personnel and travel costs

**2.1.3 Study on suitability of different *Rhamnus* species as host plant for *G. cleobule* on the Canary Islands**

Purpose: Clarifying suitable food plant species for improving management of habitats of *G. cleobule*  
 Who? BCE / ZERYNTHIA / ULL (botanists)  
 By when? 2024  
 Indicator? Assessment of suitable *Rhamnus* species  
 Resources required? Funding for personnel and travel costs

**2.1.4 Study on host plant distribution for the four selected Canary pollinator species**

Purpose: Obtaining better knowledge of suitable areas for enhanced management  
 How: Could be studied with survey (2.1.1) / Citizen Science / species distribution modelling  
 Who? ZERYNTHIA / beekeepers  
 By when? 2024  
 Indicator? Map of host plant distribution (using the existing information and closing knowledge gaps) (incl. data on phenology)  
 Resources required? Funding for personnel and travel costs

**2.1.5 Research on nesting requirements of *Lasioglossum chalcodes* on the central and western Canary Islands**

Purpose: Identification of critical resources for *L. chalcodes*  
 Who? ULL / Trier University (TU)  
 By when? 2024  
 Indicator? Knowledge of nesting requirements  
 Resources required? Student (thesis)

**2.1.6 Research on larval and adult habitat requirements of *Heringia adpropinquans* on the Canary Islands**

Purpose: Better knowledge of critical resources for the conservation of *H. adpropinquans*  
 Who? HSG  
 By when? 2024  
 Indicator? Knowledge of habitat requirements (larvae and adults)  
 Resources required? Travel costs

**2.1.7 Study of the nectariferous sources of the four Canary pollinator target species using environmental DNA techniques (pollen)**

Purpose: Better knowledge of important food plants  
 Who? ULL (in collaboration with labs, such as IBE CSIC, TU or IPNA CSIC)  
 By when? *L. chalcodes*: 2027 (for butterflies not as important)  
 Indicator? Analysis of food plants of the four pollinators  
 Resources required? Personnel and consumables

**Objective 2.2 Improving knowledge to mitigate threats**

To obtain better knowledge of the major threats to Canary pollinator species, specifically to the four selected species, and clarify the impact of lesser known threats, such as climate change, parasitoids and pesticides.

**Actions**

**2.2.1 Research on the major threats to *Lasioglossum chalcodes***

Purpose: Better knowledge of the key factors for its conservation  
 How: Analysing anthropogenic impact in the main areas of occurrence (based upon 2.1.1)  
 Who? ULL  
 By when? 2025  
 Indicator? Analysis of the threats to *L. chalcodes*  
 Resources required? Personnel



### 2.2.2 Research on the major threats to *Heringia adpropinquans*

Purpose: Better knowledge of the key factors for its conservation  
 How: Analysing anthropogenic impact in the main areas of occurrence (based upon 2.1.1)  
 Who? HSG  
 By when? 2025  
 Indicator? Analysis of the threats to *H. adpropinquans*  
 Resources required? Travel costs / Personnel

### 2.2.3 Research on potential future habitats of all four species (and host plants) under climate change

Purpose: Identification of important future habitats  
 How: Species Distribution Modelling  
 Who? ULL / TU  
 By when? 2023  
 Indicator? Species Distribution Models available  
 Resources required? Student

### 2.2.4 Research on the role of parasitoids on population dynamics of *P. cheiranthi*

Purpose: Better knowledge of the impact of parasitoids (*Cotesia glomerata*)  
 How: Breeding caterpillars from different habitats (during captive breeding project)  
 Who? Loro Parque Fundación (LPF) / ZERYNTHIA / BCE  
 By when? 2026  
 Indicator? Data on parasitoid load  
 Resources required? Personnel

### 2.2.5 Research on the use of agrochemicals (pesticides and herbicides) in high altitudes and their potential impacts on pollinators in the Canary Islands, focusing mostly on the four species (*Pieris cheiranthi*, *Gonepteryx cleobule*, *Lasioglossum chalcodes*, *Heringia adpropinquans*)

Purpose: Better knowledge on the potential impact of pesticides and herbicides on the target species

Note: It appears that pesticides are mainly used in agriculture, not in forestry. They are banned in road maintenance by some Canarian local governments. A study would start with an initial inquiry to obtain data on pesticide types and typical applications to assess potential effects in relevant areas

Who? ULL / TU  
 By when? 2023  
 Indicator? Information on pesticide/ herbicide use  
 Resources required? Student or personnel

### 2.2.6 Research on potential effects of honey bee keeping on native pollinators on the Canary Islands

Note: Honey bees have been shown to outcompete native wild bees in several places globally, including Teide National Park (Valido *et al.*, 2014, 2019)

Who? ULL / beekeepers  
 By when? 2025  
 Indicator? Report available  
 Resources required? Personnel

## Objective 2.3 Taxonomy, systematics and population genetics

To clarify the taxonomic status and genetic differentiation of the four target species in order to identify management units and avoid inbreeding and outbreeding depression.

### Actions

#### 2.3.1 Taxonomic study to improve identification of *L. chalcodes* (distinguishing from *L. viride*)

Purpose: Increasing the potential of monitoring and Citizen Science engagement

Who? ULL / Université Libre de Bruxelles (ULB)  
 By when? 2023

Indicator? Availability of a field identification method

Resources required? Personnel

### 2.3.2 Genetic study to clarify the management units of *P. cheiranthi*

Purpose: Clarification of the subspecies status to identify management units (particularly on La Gomera)

Note: Subspecies from Tenerife and La Palma strongly differentiated (clear management units)

Who? Senckenberg Deutsches Entomologisches Institut (SDEI) / ZERYNTHIA / IBE-CSIC

By when? 2026

Indicator? Assessment of subspecies status

Resources required? Personnel and consumables

### 2.3.3 Genetic study to clarify the taxonomic status of the different populations of *G. cleobule*

Purpose: Clarification of the subspecies status to identify management units

Who? SDEI / ZERYNTHIA / IBE-CSIC

By when? 2026

Indicator? Assessment of subspecies status

Resources required? Personnel and consumables

### 2.3.4 Research on systematic and population genetics of different subspecies of *Lasioglossum chalcodes*

Purpose: Clarification of the subspecies status to identify management units

Who? ULL

By when? 2025

Indicator? Assessment of management units

Resources required? Personnel and consumables

### 2.3.5 Population genetics of *H. adpropinquans*

Purpose: Clarifying genetic isolation of different populations

Who? HSG / ULL

By when? 2028

Indicator? Population genetic analysis

Resources required? Personnel and consumables

## Objective 2.4 Population monitoring

To set up a monitoring programme for the four Canarian pollinators in order to estimate their population trends and the effectiveness of conservation action.

### Actions

#### 2.4.1 Improve the population monitoring programme for butterflies by adding five transects on Tenerife and five on La Gomera

Purpose: Comprehensive coverage of all Canarian populations (10 transects exist on La Palma and 10 on Tenerife)

Note: The monitoring should be linked to the EU Pollinator Monitoring Scheme.

Who? ZERYNTHIA in collaboration with regional competent authorities (GC / Cabildos)

By when? 2025

Indicator? 5 new transects on La Gomera / Tenerife

Resources required? Volunteer time / material / personnel

#### 2.4.2 Establishment of monitoring protocols for *L. chalcodes* and *H. adpropinquans* on the Canary Islands

Purpose: Data on population trends (training rangers? bee-keepers!)

Who? ULL / HSG in collaboration with regional competent authorities (GC / Cabildos)

By when? 2025

Indicator? Monitoring scheme in place

Resources required? Personnel

### 2.4.3 Monitoring the effectiveness of conservation management actions for the four selected Canarian pollinator species and feeding back into management practices

Purpose: Assessment of effectiveness of actions

How: Obtaining detailed population data in areas where actions took place

Who? ZERYNTHIA / ULL / HSG in collaboration with regional competent authorities (GC / Cabildos)

By when? 2023–2030

Indicator? Monitoring data available

Resources required? Personnel, volunteer time, travel costs

### 2.4.4 Monitoring the conservation status trends of pollinators of the Laurel Forest zone on the Canary Islands

Note: Green-listing

Who? ZERYNTHIA / ULL / HSG / BCE / MAISG / ICC

By when? 2028

Indicator? Monitoring data available

Resources required? Personnel and volunteer time

## Goal 3: Species Support for *Pieris cheiranthi*

*Pieris cheiranthi* with an improved conservation status through an ex-situ captive population and reintroduction on La Gomera.

### Objective 3.1 Species Recovery Plan

To compile a species recovery plan approved by the Canarian regional government by 2023 in order to set the legal basis for captive breeding and reintroduction of the Canary Large White.

#### Actions

#### 3.1.1 Species Recovery Plan for the Canary Large White

Who? ZERYNTHIA / ULL / LPF / BCE to revise the draft in collaboration with GC

Note: The plan should also include an assessment, whether a captive breeding programme is justified (see objective 3.2); consider existing legislation:

<https://www.miteco.gob.es/es/biodiversidad/temas/conservacion-de-especies/conservacion-ex-situ/ce-exsitu-reintroduccion.aspx>

[https://www.miteco.gob.es/es/biodiversidad/temas/conservacion-de-especies/doc\\_directrices\\_reintroduccion\\_tcm30-198128.pdf](https://www.miteco.gob.es/es/biodiversidad/temas/conservacion-de-especies/doc_directrices_reintroduccion_tcm30-198128.pdf)

By when? 2023

indicator: Recovery plan approved

Resources required? Personnel

### Objective 3.2 Captive breeding programme for *Pieris cheiranthi*

To establish a captive back-up population of the Canary Large White on Tenerife by 2025 in order to reduce extinction risk and create a source population for further reintroduction.

#### Actions

#### 3.2.1 Identification of suitable source populations for the captive breeding programme for *P. cheiranthi*

Purpose: Minimising risk of threatening existing populations by determining how many can be collected at what times?

Note: Data available from Action 2.1.1 (survey)

Who? ZERYNTHIA / BCE / LPF

By when? 2023

Indicator? Analysis of suitable source populations

Resources required? Personnel



### 3.2.2 Development of a captive breeding protocol for *P. cheiranthi*

Purpose: Optimising the captive breeding programme  
 Note: Building on experience of the butterfly house in Icod  
 Test suitability of food plants  
 Who? LPF (with EAZA) / ZERYNTHIA / BCE  
 By when? 2024  
 Indicator? Captive breeding protocol  
 Resources required? Personnel

### 3.2.3 Collection of eggs, caterpillars and/or adult females of *P. cheiranthi*

Purpose: Foundation of the captive population (including parasitoid monitoring – see above)  
 Note: Permits need to be applied for early enough / early collection for avoidance of parasitisation  
 Who? ZERYNTHIA / BCE / LPF  
 By when? 2025  
 Indicator? Individuals collected  
 Resources required? Personnel / travel costs / material

### 3.2.4 Captive breeding of *P. cheiranthi* on Tenerife

Purpose: Back-up population in at least one zoo  
 Note: Only breed the individuals from the same island where breeding takes place; extension to other zoos is possible later  
 Who? LPF (with EAZA) / ZERYNTHIA / BCE  
 By when? 2026  
 Indicator? Captive population in place  
 Resources required? Personnel / cages

## Objective 3.3 Reintroduction of *Pieris cheiranthi* on La Gomera

To prepare the reintroduction of the Canary Large White (*Pieris cheiranthi*) on La Gomera in order to re-establish a wild back-up population and fill a distribution gap.

### Actions

#### 3.3.1 Feasibility study to determine suitable reintroduction habitats for *P. cheiranthi* on La Gomera and appropriateness of suitable source populations

Note: Considering Ley 42/2007, de 13 de diciembre, del Patrimonio Natural y de la Biodiversidad. Artículo 55. Reintroducción de especies silvestres autóctonas extinguidas.

Basis: Climate maps, micro-distribution of food plant

Purpose: Maximising reintroduction success probability

Who? BCE / ZERYNTHIA / ULL (botanists)

By when? 2025

Indicator? Map with priority sites for reintroduction

Resources required? Personnel

#### 3.3.2 Compiling a reintroduction strategy for *P. cheiranthi* on La Gomera

Purpose: Maximising reintroduction success probability

Note: Consider IUCN reintroduction guidelines, consider research on the genetic structure under 2.3.2 and potential threats in the reintroduction area

How: Introduction of caterpillars or adults from captive breeding

Who? BCE / ICC / ZERYNTHIA

By when? 2026

Indicator? Reintroduction strategy exists

Resources required? Personnel

### 3.3.3 Preparation of recipient sites for new *P. cheiranthi* populations

Purpose: Maximising reintroduction success probability

Note: potentially sowing or promoting *Crambe* spp. etc. Introduction only with *Crambe* spp. that are native on the island

Who? Cabildos / Municipalities / Regional government / ZERYNTHIA / LPF / ULL (botanists)

By when? 2028

Indicator? Recipient sites have been optimised for reintroduction

Resources required? Personnel / travel costs

## Goal 4: Assessment of existing plans and conservation management

An increase in large, well connected, sustainable areas of native laurel forest vegetation within the Canarian pollinators' ranges and a reduction in key threats across the Canary Islands.

By when? 2024

Indicator? Assessment report

Resources required? Personnel

### **Objective 4.1 Assessment of water management in laurel forest**

To assess existing water management plans for each island by 2024 and instigate amendments in order to improve habitat suitability of high-altitude habitats.

#### **Actions**

#### *4.1.1 Assessment of the suitability of water management plans for preserving the selected Canarian pollinator species on each island*

Note: Each island has a different plan, a public consultation was in place for La Gomera; early participation in the ongoing public information procedures needed. The consultation period was closed in May 2022. This page provides links to the documentation of the third cycle hydrological plans, which are with the Ministry to examine and implement the received comments:

[https://www.miteco.gob.es/es/agua/temas/planificacion-hidrologica/planificacion-hidrologica/PPHH\\_tercer\\_ciclo.aspx](https://www.miteco.gob.es/es/agua/temas/planificacion-hidrologica/planificacion-hidrologica/PPHH_tercer_ciclo.aspx).

Who? ULL / ZERYNTHIA / Insular Water Councils (Cabildos) (e.g. Consejo Insular de Aguas de La Gomera)

Collaboration with other experts (hydrologists) needed

#### *4.1.2 Instigate amendments to water management plans on the Canary Islands where this is needed for the protection of the four Canarian pollinator species*

Purpose: Increasing habitat availability and quality (might be necessary for reintroduction)

Who? ULL / ZERYNTHIA

Collaboration with other experts (hydrologists) needed

By when? 2025

Indicator? Water extraction reduced at least in one key habitat

Resources required? Personnel

### **Objective 4.2 Reduce the risk of importing potentially harmful alien species**

To review the existing list of potentially invasive species for the Canary Islands and instruct inspection services for health of vegetable products in order to minimise potential future threats of introducing potentially harmful alien species, such as *Pieris brassicae*.

#### **Actions**

#### *4.2.1 Review the existing lists of potentially invasive alien species on the Canary Islands for potential gaps*

Some more information is found here:

<https://www.miteco.gob.es/es/biodiversidad/temas/conservacion-de-especies/especies-exoticas-invasoras/default.aspx>

Who? ULL / ZERYNTHIA / BCE

By when? 2024

Indicator? Import of potentially invasive alien species reduced

Resources required? Personnel

#### 4.2.2 Instruct inspection services for health of vegetable products regarding the risk of introducing *P. brassicae* eggs or caterpillars

Note: A special sanitary regulation (decree) exists for Canary Islands (including Cabbage)

Who? ZERYNTHIA / LPF / GC / Agricultural Ministry

By when? 2023

Indicator? Inspection services have included steps to reduce risk of *P. brassicae* introduction

Resources required? Personnel / travel costs

### Objective 4.3 Pesticide reduction

To work with farmers on the reduction of pesticide use in order to mitigate risk to the four selected pollinators.

#### Actions

##### 4.3.1 Reduction of pesticide use in farmland adjacent to habitats of the four selected Canarian pollinators

How? Beekeepers make contracts with farmers for pollination of their fields, including the requirement to ban pesticides.

Who? Beekeepers / ZERYNTHIA / ULL

By when? 2022

Indicator? Number of contracts between beekeepers and farmers

Resources required? Volunteer time

### Objective 4.4 Improving pollinator conservation in protected areas

To facilitate collaboration of park managers and entomologists, review existing habitat management plans, create management principles for lesser known pollinators and create micro-reserves in order to improve consideration of pollinators in protected areas.

#### Actions

##### 4.4.1 Better consideration of threatened pollinator species in existing protected areas on the Canary Islands by facilitating collaboration between PA management and entomologists

Purpose: Avoiding neglect of threatened pollinators

Who? ULL / Cabildos / Canarian Government / ZERYNTHIA / IPNA CSIC

By when? 2024

Indicator? Regular meetings

Resources required? Personnel

##### 4.4.2 Analyse existing habitat management plans for Natura 2000 areas on the Canary Islands for potential gaps regarding the conservation of the four selected Canarian pollinator species

Links: <https://www.gobiernodecanarias.org/planificacionterritorial/temas/informacion-territorial/enp/>  
[https://www.gobiernodecanarias.org/medioambiente/temas/biodiversidad/espacios\\_protegidos/red-natura-2000/red\\_natura\\_2000\\_en\\_canarias/planes-gestion-zec/](https://www.gobiernodecanarias.org/medioambiente/temas/biodiversidad/espacios_protegidos/red-natura-2000/red_natura_2000_en_canarias/planes-gestion-zec/)

Purpose: Analyse plans for potential gaps for consideration of pollinators along ecotones

Who? ULL / ZERYNTHIA / Cabildos / Gobierno de Canarias

By when? 2025

Indicator? Pollinators considered in plans for protected areas

Resources required? Personnel



4.4.3 *Creating habitat management principles for L. chalcodes and H. adpropinquans based upon the best knowledge and revise based on new knowledge*

Note: As the habitat requirements of *L. chalcodes* and *H. adpropinquans* are not sufficiently well known, this action needs to consider the results of research conducted under 2.1.5 and 2.1.6

Who? ULL / HSG

By when? 2027

Indicator? Habitat management measures conducted

Resources required? Personnel

4.4.4 *Delimitation of critical areas for the four selected species and creation of micro-reserves (special zones/exclusion zones within larger protected areas, e.g. site of specific interest) across the Canary Islands*

Note: One should be at the southernmost population in Tenerife (Barranco del Infierno).

Purpose: Better legal protection of the last remaining habitats

Who? ZERYNTHIA / Government / Municipalities

By when? 2030

Indicator? Microreserves exist

Resources required? Personnel

**Objective 4.5 Laurel forest restoration and conservation**

To increase potential habitat of Canarian pollinators by facilitating laurel forest restoration and improving preservation of laurel forest ecotones

**Actions**

4.5.1 *Review and update existing plans for laurel forest restoration on the Canary Islands with a focus on key areas for the four threatened pollinators*

Purpose: Increasing availability of habitat

Note: A laurel forest restoration plan exists (from 1999) and needs to be updated.

Laurel Forest restoration will also help to mitigate mesoclimatic effects and as a measure to mitigate global warming by enhancing carbon storage. Laurel forest restoration is particularly needed on Gran Canaria!

Who? ULL / Cabildos / ZERYNTHIA / HSG / BCE

By when? 2026

Indicator? Updated plans for laurel forest restoration

Resources required? Personnel

4.5.2 *Avoiding degradation of laurel forest ecotones on the Canary Islands*

Purpose: Reduction of pressures to the populations of pollinators

Note: As the threats to *L. chalcodes* and *H. adpropinquans* are not sufficiently well known, this action needs to consider the results of research conducted under 1.2.1 and 1.2.2; Laurel forests have a high priority (and management plans); in line with management plans of Natura 2000 (these have actions to address threats)

Potential threats: invasive alien species; recreational activities; bee-keeping

Who? ULL / Cabildos

By when? 2027

Indicator? Threat mitigation measures conducted

Resources required? Personnel

## Goal 5: Public awareness

An increase in awareness of the importance of native pollinators and their habitats and threats on the Canary Islands, as well as more citizens actively engaged in their conservation.

### **Objective 5.1 Public awareness of endemic pollinator species**

To increase public awareness of endemic pollinator species on the Canary Islands, their importance and genetic uniqueness of populations and their food plants and habitats, such as ecotones.

#### **Actions**

*5.1.1 Creating a website to share information on the Canarian pollinator conservation project, with pages dedicated to the four selected pollinators*

Who? LPF / ZERYNTHIA / ULL  
 By when? 2023–2028  
 Indicator? Website in place and updated  
 Resources required? Personnel / designer / website fee

*5.1.2 Organise a campaign to raise awareness among the general public for the threatened Canarian pollinators (press, educational centres, schools, farmers, municipalities, foresters)*

Purpose: Increasing public awareness of the importance of endemic pollinators  
 Note: Cabildo on Tenerife has pollinator campaign (others may need support)  
 Who? LPF / ZERYNTHIA / beekeepers / ULL  
 By when? 2023  
 Indicator? Awareness campaign started  
 Resources required? Personnel / material

*5.1.3 Creating material for schools on the Canary Islands to inform about the threatened Canarian pollinators*

Who? ZERYNTHIA / ULL / LPF  
 By when? 2023  
 Indicator? Material for schools completed  
 Resources required? Personnel / material

*5.1.4 Butterfly/Pollinator Oasis Campaigns (schools, municipalities, etc.) on the Canary Islands*

Note: Any action in education centres needs approval  
 Who? ZERYNTHIA / ULL / LPF  
 By when? Starting 2022  
 Indicator? Campaigns conducted  
 Resources required? Personnel / material

*5.1.5 Create information signs along hiking trails (also visitor centres) where the four selected Canarian pollinator species occur*

Who? ZERYNTHIA / ULL / Cabildos  
 By when? 2024  
 Indicator? Signs completed  
 Resources required? Personnel / material

*5.1.6 Raise awareness of the importance of the four selected pollinators, and pollinators in general with specific local communities, by identifying those living closest to the last remains of laurel forest.*

Purpose: Improving connection of local communities to their neighbouring fauna  
 Who? LPF / ZERYNTHIA / Cabildos  
 By when? 2024  
 Indicator? Information events conducted  
 Resources required? Personnel / material

## Objective 5.2 Behaviour change

To raise awareness of and reduce threats posed by importing potentially invasive alien species or causing wildfires on the Canary Islands.

### Actions

*5.2.1 Increasing outreach of existing awareness campaigns on the Canary Islands regarding the risk of wildfires and the negative effects on threatened pollinators*

Purpose: Reducing wildfire risk

Note: Cabildos have ongoing campaigns, NGOs and other stakeholders can help to increase outreach

Who? LPF / ZERYNTHIA / Cabildos

By when? 2023

Indicator? Social media posts on risks of causing wildfires

Resources required? Volunteer time

*5.2.2 Raising awareness of the risk of inter-island transfer of endemic organisms on the Canary Islands as a possible threat to their genetic diversity*

Purpose: Education on the threat of gene pool swamping and value of unique genetic (evolutionary) heritage on each island

Who? LPF / ZERYNTHIA / ULL / TU

By when? 2024

Indicator? Education material available

Resources required? Personnel

## Objective 5.3 Citizen engagement

To provide means for citizens and institutions to engage in pollinator conservation by planting food plants for Canarian pollinators and removing human litter from habitats.

### Actions

*5.3.1 Promote growth of *Crambe* spp. in habitats of *P. cheiranthi* on the Canary Islands*

Note: Needs to be informed by research (action 2.1.2); ensure correct *Crambe* species are promoted

How: seed collection, cultivation, e.g. with Botanical Garden?

Who? ZERYNTHIA / BCE ideally with other partners, such as ULL (Botany), Vivero insular de flora autóctona de Tenerife, Jardín de aclimatación da la Orotava, Vivero Caldera de Taburiente

By when? 2024

Indicator? Increased population of *Crambe* spp.

Resources required? Personnel, plant nursery, volunteers

*5.3.2 Promote planting of *Rhamnus* spp. as shrubs in the green spaces of towns and cities, as well as private gardens and schools on the Canary Islands*

Who? ZERYNTHIA / BCE ideally with other partners, such as ULL (Botany), Vivero insular de flora autóctona de Tenerife, Jardín de aclimatación da la Orotava, Vivero Caldera de Taburiente

By when? 2024

Indicator? More localities with *Rhamnus* spp. plants

Resources required? Personnel, plant nursery, volunteers

*5.3.3 Improve the habitats of selected Canarian pollinators by removing litter of human origin and invasive plants*

Purpose: Improving habitat quality, which is also useful to raise public awareness

How? Citizen campaign

Who? Cabildos / ZERYNTHIA / Oficina del voluntariado de Tenerife

By when? 2025

Indicator? Reduction of litter in key habitats

Resources required? Personnel, material, volunteers



# References

- Acosta-Fernández, B. (2009). Presencia de *Cacyreus marshalli* Butler, [1898] en la isla de Tenerife, Islas Canarias, España y otros registros de interés sobre Rhopalocera endémicos de la isla (Lepidoptera: Papilionoidea). *SHILAP Revista de Lepidopterología*, 37, 155–159.
- Báez, M., (1977). Los Sífidos de las Islas Canarias. Instituto de Estudios Canarios (Universidad de la Laguna, Monografías; Sección IV (XV): 143 pp.
- Bland, E.W. & Lace, L.A. (2020). On Madeira, the success of the speckled wood butterfly (*Pararge aegeria*) has coincided with declining populations of the Madeiran speckled wood (*Pararge xiphia*): is the colonist to blame? *Journal of Insect Conservation*, 24: 365–374.
- Brunton, C.F.A. & Hurst, G.D.D. (1998). Mitochondrial DNA phylogeny of Brimstone butterflies (genus *Gonepteryx*) from the Canary Islands and Madeira. *Biological Journal of the Linnean Society* 63: 69–79.
- Conservation Planning Specialist Group (CPSG) (2020). *Species Conservation Planning Principles & Steps*. Appley Valley, MN: IUCN SSC Conservation Planning Specialist Group
- Dapporto, L., Cini, A., Vodá, R., Dincă, V., Wiemers, M. & Menchetti, M., et al. (2019). Integrating three comprehensive data sets shows that mitochondrial DNA variation is linked to species traits and paleogeographic events in European butterflies. *Molecular Ecology Resources* 19: 1623–1636.
- Del Arco Aguilar, M-J., & Rodríguez Delgado, O. (2018). Vegetation of the Canary Islands. *Plant and Vegetation* 16.
- Del Arco Aguilar, M-J., González-González, R., Garzón-Machado, V. & Pizarro-Hernández, B. (2010). Actual and potential natural vegetation on the Canary Islands and its conservation status. *Biodiversity and Conservation* 19: 3089–3140.
- Eitschberger, U. & Wiemers, M. (1991). Dreizehnte Ergänzung zu „Systematische Untersuchungen am *Pieris napi-bryoniae*, Komplex (s.l.)“ Das Ei von *Pieris cheiranthi* (Hübner, 1806) (Lepidoptera, Pieridae). *Atalanta* 21 [1990]: 265–268.
- Fernández-Palacios, J.M., de Nascimento, L., Otto, R., Delgado, J.D., García-del-Rey, E., Arévalo, J.R. & Whittaker, R.J. (2011). A reconstruction of Palaeo-Macaronesia, with particular reference to the long-term biogeography of the Atlantic island laurel forests. *Journal of Biogeography* 38: 226–246.
- Gallai, N., Salles, J-M., Settele, J. & Vaissière, B.E. (2009). Economic valuation of the vulnerability of world agriculture confronted with pollinator decline. *Ecological Economics* 68: 810–821.
- Geiger, H.J. & Scholl, A. (1985). Systematics and evolution of holarctic Pierinae (Lepidoptera). An enzyme electrophoretic approach. *Experientia* 41: 24–29.
- Higgins, L.G. & Riley, N.D. (1970). *A field guide to the butterflies of Britain and Europe*.
- Hohmann, H., Barquín, J., La Roche, F. & Ortega, G. (1993). Bienen, Wespen und Ameisen der Kanarischen Inseln:(Insecta: Hymenoptera: Aculeata) (No. 595.79 BIE).
- Höllermann, P. (2000). The impact of fire in Canarian ecosystems 1983–1998. (Auswirkungen des Feuers in Ökosystemen der Kanarischen Inseln 1983–1998). *Erdkunde* 54: 70–75.
- IUCN – Species Survival Commission (SSC), Species Conservation Planning Sub-Committee (2017). *Guidelines for Species Conservation Planning*. Version 1.0. Gland, Switzerland, 114 pp.
- Jones, M.J., Lace, L.A., Harrison, E.C. & Stevens-Wood, B. (1998). *Territorial behaviour in the speckled wood butterflies Pararge xiphia and P. aegeria of Madeira: A mechanism for interspecific competition*. 21: 297-305.
- Juan, C., Emerson, B.C., Oromí, P. & Hewitt, G.M. (2000). Colonization and diversification: towards a phylogeographic synthesis for the Canary Islands. *Trends in Ecology and Evolution* 15: 104-109.
- Kemp, J.R., Michez, D., Nieto, A. & Pauly, A. (2013). *Lasioglossum chalcodes*. The IUCN Red List of Threatened Species 2013: e.T19198723A43365379.
- Kevan, P.G. (1999). Pollinators as bioindicators of the state of the environment: species, activity and diversity. *Agriculture, Ecosystems & Environment* 74: 373–393.

- Lozan, A.I., Monaghan, M.T., Spitzer, K., Jaroš, J., Žurovcová, M. & Brož, V. (2008). DNA-based confirmation that the parasitic wasp *Cotesia glomerata* (Braconidae, Hymenoptera) is a new threat to endemic butterflies of the Canary Islands. *Conservation Genetics* 9: 1431–1437.
- Middleton-Welling, J., Dapporto, L., García-Barros, E., Wiemers, M., Nowicki, P. & Plazio, E., et al. (2020a). A new comprehensive trait database of European and Maghreb butterflies, Papilionoidea. *Scientific Data* 7: 351.
- Middleton-Welling, J., Dapporto, L., García-Barros, E., Wiemers, M., Nowicki, P. & Plazio, E., et al. (2020b). European & Maghreb Butterfly Trait Data. <https://butterflytraits.github.io/European-Butterfly-Traits/index.html>, accessed on 11.08.2021
- Molina-Terrén, D.M., Fry, D.L., Grillo, F.F., Cardil, A. & Stephens, S.L. (2016). Fire history and management of *Pinus canariensis* forests on the western Canary Islands Archipelago, Spain. *Forest Ecology and Management* 382: 184–192.
- Monasterio León, Y., Escobés Jiménez, R. & Gómez Hernández, J.D. (2011). Nuevos datos y propuestas de conservación para *Pieris cheiranthi* (Hübner 1808) (Lepidoptera, Pieridae). Asociación ZERYNTHIA. Informe inédito. 12 pp.
- Morales, D., Jiménez, M.S., González-Rodríguez, A.M. & Cermák, J. (1996). Laurel forests in Tenerife, Canary Islands. *Trees* 11: 34–40.
- Myers, N., Mittermeier, M.A., Mittermeier, C. G., Gustavo A. B., da Fonseca, G. A. B., & Kent, J. (2000). Biodiversity hotspots for conservation priorities. *Nature* 403: 853–858.
- Notario del Pino, J., Arbelo, Rodríguez C.D., Rodríguez Rodríguez, A., Fernández López, Á. & Gómez González, L.A. (2015). Burned soils at La Gomera wildfire: a preliminary GIS analysis. *Flamma* 6: 95–97.
- Oberhauser, K. & Guiney, M., (2009). Insects as flagship conservation species. *Terrestrial Arthropod Reviews* 1: 111–123.
- Ollerton, J. (2017). Pollinator Diversity: distribution, ecological function, and conservation. *Annual Review of Ecology, Evolution and Systematics* 48: 353–376.
- Ollerton, J., Winfree, R. & Tarrant, S. (2011). How many flowering plants are pollinated by animals? *Oikos* 120: 321–326.
- Pinker, R. (1968). Der Lebensraum von *Pieris cheiranthi* HBN. und die Einwanderung und Ausbreitung der *Catopsilia florella* F. auf den Kanaren. *Arb. Gem. österr. Entomologen* 20: 22–25.
- Pérez, A.J. & Hernández, N.E.M. (2012). Presencia de *Bombus (Megabombus) ruderatus* en Canarias. *Revista de la Academia Canaria de Ciencias: Folia Canariensis Academiae Scientiarum* 24: 103–114.
- Rehnelt, K. (1974a). *Gonepteryx eversi* n. sp., ein neuer Zitronenfalter von den Kanarischen Inseln. *Entomologische Zeitschrift* 84: 51–52.
- Rehnelt, K. (1974b). Zur Merkmalsanalyse der *Gonepteryx*-Arten von den Kanarischen Inseln. *Entomologische Zeitschrift* 84: 95–100.
- Rehnelt, K. (1989). Neuere Farbmessungen an den Zitronenfaltern der Kanarischen Inseln (Pieridae, Gonepteryx). *Verh. Westd. Entomol. Tag 1988*: 317–333.
- Rose, K. (1976). Lepidopterologische Beobachtungen auf La Palma (Kanarische Inseln). *Atalanta* 7: 31–34.
- Rowlings, M. (2012). Canary Islands' Large White (*Pieris cheiranthi*) on Tenerife, Spain. *European Interests Group Newsletter*, 12: 9–15.
- Russell, J.C. & Kaiser-Bunbury, C.N. (2019). Consequences of Multispecies Introductions on Island Ecosystem. *Annual Review of Ecology, Evolution, and Systematics* 50: 169–190.
- Speight, M.C.D. (2020). Species accounts of European Syrphidae, 2020. *Syrph the Net, the database of European Syrphidae (Diptera)*, vol. 104, 314 pp. Dublin: Syrph the Net publications.
- Tolman, T. & Lewington, R. (2012). *Schmetterlinge Europas und Nordwestafrikas. Alle Tagfalter, über 2000 Arten. 2. Aufl.* Stuttgart: Kosmos (Kosmos-Naturführer).
- Triantis, K.A., Borges, P.A.V., Hortal, J. & Whittaker, R.J. (2010). *The Macaronesian province: patterns of species richness and endemism of arthropods*. In: A. R. M. Serrano, P. A. V. Borges, M. Boieiro and P. Oromí (eds.) *Terrestrial arthropods of Macaronesia - Biodiversity, Ecology and Evolution* (pp. 49–71). Portugal: Fundação para a Ciência e Tecnologia
- Valido, A., Rodríguez-Rodríguez, M.C. & Jordano, P. (2014). Impacto de la introducción de la abeja doméstica (*Apis mellifera*, Apidae) en el Parque Nacional del Teide (Tenerife, Islas Canarias). *Ecosistemas* 23: 58–66.
- Valido, A., Rodríguez-Rodríguez, M.C. & Jordano, P. (2019). Honeybees disrupt the structure and functionality of plant-pollinator networks. *Scientific Reports* 9: 4711
- van Swaay, C., Wynhoff, I., Verovnik, R., Wiemers, M., López Munguira, M., Maes, D., Sasic, M., Verstrael, T., Warren, M. & Settele, J. (2010a). *Gonepteryx cleobule*. The IUCN Red List of Threatened Species 2010: e.T173223A6976222.

- van Swaay, C., Wynhoff, I., Verovnik, R., Wiemers, M., López Munguira, M., Maes, D., Sasic, M., Verstrael, T., Warren, M. & Settele, J., (2010b). *Pieris cheiranthi*. The IUCN Red List of Threatened Species 2010: e.T39484A10227844.
- Vujić, A. & Šebić, A. (2021). *Heringia adpropinquans*. The IUCN Red List of Threatened Species 2021: e.T149163476A149163479.
- Vujić, A., Ståhls, G., Ačanski, J., Bartsch, H., Bygebjerg, R. & Stefanovic, A. (2013). Systematics of Pipizini and taxonomy of European *Pipiza* Fallén: molecular and morphological evidence (Diptera, Syrphidae). *Zoologica Scripta*, 42: 288-305.
- Wiemers, M. (1992). *Pieris brassicae brassicae* (Linnaeus, 1758) auf Lanzarote-Erstnachweis für die Kanarischen Inseln. *Atalanta* 23: 103-106.
- Wiemers, M. (1995). The butterflies of the Canary Islands. A survey on their distribution, biology and ecology (Lepidoptera: Papilionoidea and Hesperioidea). *Linneana Belgica* 15 (2): 63-118.
- Wiemers, M. (2003). Spain – Canary Islands. In: C. Van Swaay, and M. Warren (eds): *Prime Butterfly Areas in Europe* (pp. 555-557). Wageningen.
- Wiemers, M., Balletto, E., Dincă, V., Fric, ZF., Lamas, G. & Lukhtanov, V., et al. (2018). An updated checklist of the European Butterflies (Lepidoptera, Papilionoidea). *ZooKeys* 811: 9-45.
- Ziegler, H. & Jost, B. (1990). Beitrag zur Kenntnis der Biologie sowie Beschreibung der ersten Stände von *Gonepteryx eversí* Rehnelt, 1974. *Atalanta* 21: 109-119.



# Annex I: Agenda

## "Canary Islands multi-species Action Plan for Pollinators" Online Workshop

22 and 23 November 2021

The link to join the workshop will be provided to registered participants by email

**Monday 22 November 2021**

13:00	Welcome and introduction
13:20	What is the IUCN and the ICC? What is Strategic Conservation Planning?
13:30	Background of the project, outlining the workshop
13:40	Biology and Conservation of <i>Pieris cheiranthi</i> , <i>Gonepteryx cleobule</i> , <i>Eucera hohmanni</i> , and <i>Heringia adropinguans</i>
14:00	Historic and current species distribution, status assessment and threats
14:45	Coffee Break
15:00	Vision, Goals and Objectives
16:10	Discussion on major objectives: I Research
17:00	End of day 1

**Tuesday 23 November 2021**

13:00	Discussion on major objectives: II Conservation management
14:00	Discussion on major objectives: III Monitoring
15:00	Coffee break
15:10	Discussion on major objectives: IV Legal protection
15:50	Discussion on major objectives: V Outreach
16:45	Discussion on major objectives: VI Funding
17:00	Conclusions
17:30	End of day 2

Time zone:  
Canary Islands,  
Spain (GMT+1)



# Annex II: Action Plan

The plan is organised in two phases (2023–2026 and 2027–2030). Grey cells show general times of activity, while dark grey cells show the milestones as defined in the Action Plan.

Goal	Objective	Action	Text	2021	2022	2023	2024	2025	2026	2027	2028	2029	2030
1	1.1	1.1.1	Creation of a steering group	x	x	x	x	x	x	x	x	x	x
1	1.2	1.2.1	Motion for Biodiversity Strategy Tenerife	x									
1	1.2	1.2.2	Canarian Catalogue of Threatened Species		x	x							
1	1.2	1.2.3	Spanish Catalogue of Threatened Species			x	x	x	x				
2	2.1	2.1.1	Survey on distribution and abundance			x							
2	2.1	2.1.2	Study on suitability of <i>Crambe</i> species for <i>P. cheiranthi</i>			x	x						
2	2.1	2.1.3	Study on suitability of <i>Rhamnus</i> species for <i>G. cleobule</i>			x	x						
2	2.1	2.1.4	Study on host plant distribution			x	x						
2	2.1	2.1.5	Research on nesting requirements of <i>L. chalcodes</i>			x	x						
2	2.1	2.1.6	Research on habitat requirements of <i>H. adpropinquans</i>			x	x						
2	2.1	2.1.7	Study on nectar plants			x	x	x	x	x			
2	2.2	2.2.1	Research on threats to <i>L. chalcodes</i>			x	x	x					
2	2.2	2.2.2	Research on threats to <i>H. adpropinquans</i>			x	x	x					
2	2.2	2.2.3	Research on future habitats under climate change			x							
2	2.2	2.2.4	Research on role of parasitoids				x	x	x				
2	2.2	2.2.5	Research on agrochemicals		x	x							
2	2.2	2.2.6	Research on effects of bee-keeping			x	x	x					
2	2.3	2.3.1	Taxonomic study on <i>L. chalcodes</i>			x							
2	2.3	2.3.2	Genetic study on <i>P. cheiranthi</i>			x	x	x	x				
2	2.3	2.3.3	Genetic study on <i>G. cleobule</i>			x	x	x	x				
2	2.3	2.3.4	Population genetics of <i>L. chalcodes</i>			x	x	x					
2	2.3	2.3.5	Population genetics of <i>H. adpropinquans</i>						x	x	x		
2	2.4	2.4.1	Ten new butterfly monitoring transects			x	x	x					
2	2.4	2.4.2	Monitoring protocols for <i>L. chalcodes</i> & <i>H. adpropinquans</i>			x	x	x					
2	2.4	2.4.3	Monitoring effectiveness of conservation action			x	x	x	x	x	x	x	x
2	2.4	2.4.4	Monitoring conservation status trend (Green-listing)							x	x		

Goal	Objective	Action	Text	2021	2022	2023	2024	2025	2026	2027	2028	2029	2030
3	3.1	3.1.1	Species Recovery Plan <i>P. cheiranthi</i>		x	x							
3	3.2	3.2.1	Identification of source populations		x	x							
3	3.2	3.2.2	Development of captive breeding protocol		x	x	x						
3	3.2	3.2.3	Collection of eggs, caterpillars or adult females				x	x					
3	3.2	3.2.4	Captive breeding on Tenerife					x	x				
3	3.3	3.3.1	Reintroduction feasibility study				x	x					
3	3.3	3.3.2	Reintroduction strategy					x	x				
3	3.3	3.3.3	Preparation of recipient sites						x	x	x		
4	4.1	4.1.1	Assessment of water management plans			x	x						
4	4.1	4.1.2	Amendments to water management plans				x	x					
4	4.2	4.2.1	Review list of invasive species			x	x						
4	4.2	4.2.2	Instruct inspection services			x							
4	4.3	4.3.1	Reduce pesticide use in farmland		x	x	x	x	x				
4	4.4	4.4.1	Consideration of pollinators in PAs			x	x						
4	4.4	4.4.2	Analyse habitat management plans for Natura 2000			x	x	x					
4	4.4	4.4.3	Management principles for <i>L. chalcodes</i> / <i>H. adpropinquans</i>			x	x	x	x	x			
4	4.4	4.4.4	Create micro-reserves			x	x	x	x	x	x	x	x
4	4.5	4.5.1	Review laurel forest restoration plans			x	x	x	x				
4	4.5	4.5.2	Avoid degradation of laurel forest ecotones			x	x	x	x	x			
5	5.1	5.1.1	Website to share information on Canarian pollinator project			x	x	x	x	x	x	x	x
5	5.1	5.1.2	Awareness campaign			x	x	x	x	x	x	x	x
5	5.1	5.1.3	Material for schools			x	x	x	x	x	x	x	x
5	5.1	5.1.4	Butterfly/Pollinator Oasis Campaign		x	x	x	x	x	x	x	x	x
5	5.1	5.1.5	Signs along hiking trails				x	x	x	x	x	x	x
5	5.1	5.1.6	Awareness raising with local communities			x	x	x	x	x	x	x	x
5	5.2	5.2.1	Increase outreach of existing campaigns on wildfires			x	x	x	x	x	x	x	x
5	5.2	5.2.2	Raise awareness for risk of inter-island transfer				x	x	x	x	x	x	x
5	5.3	5.3.1	Promote growth of <i>Crambe</i>			x	x	x	x	x	x	x	x
5	5.3	5.3.2	Promote planting of <i>Rhamnus</i>			x	x	x	x	x	x	x	x
5	5.3	5.3.3	Improve habitats by removing litter					x	x	x	x	x	x

