

LPIS AND GSAA TECHNICAL SPECIFICATIONS AND SCHEMAS

77th MIG-T Meeting

Carlo Cipolloni

ISPRA/INSPIRE National Technical Responsible/MIG-T

IACS Technical Framework

The technical specifications of the IACS in agreement with INSPIRE were also presented several times during the last MIG meeting in November 2023, furthermore the **Land Parcel Identification System (LPIS)** and **GeoSpatial Aid Application (GSAA)** are considered by Regulation 138/2023 as High Value Datasets within the "Geospatial" category.

The national and local agencies that manage agricultural parcels therefore need to implement the datasets also in line with the INSPIRE interoperability rules, possibly by June 2024.

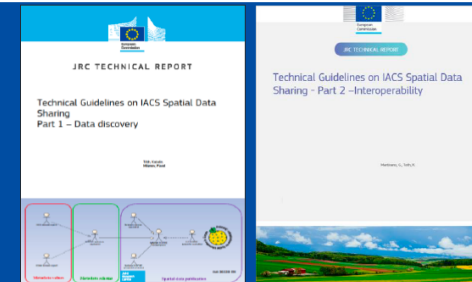
«IACS data sharing» activities

Legal obligation
for Member
States?

REGULATION (EU) 2021/2116 Article 67

3. Member States shall ensure that data sets collected through the integrated system which are relevant for the purposes of Directive 2007/2/EC of the European Parliament and of the Council⁽³⁾ or for monitoring Union policies are shared free of charge between its public authorities and made publicly available at national level. Member States shall also provide the institutions and bodies of the Union with access to those data sets.

- Data sharing following INSPIRE rules: discovery, access, interoperability



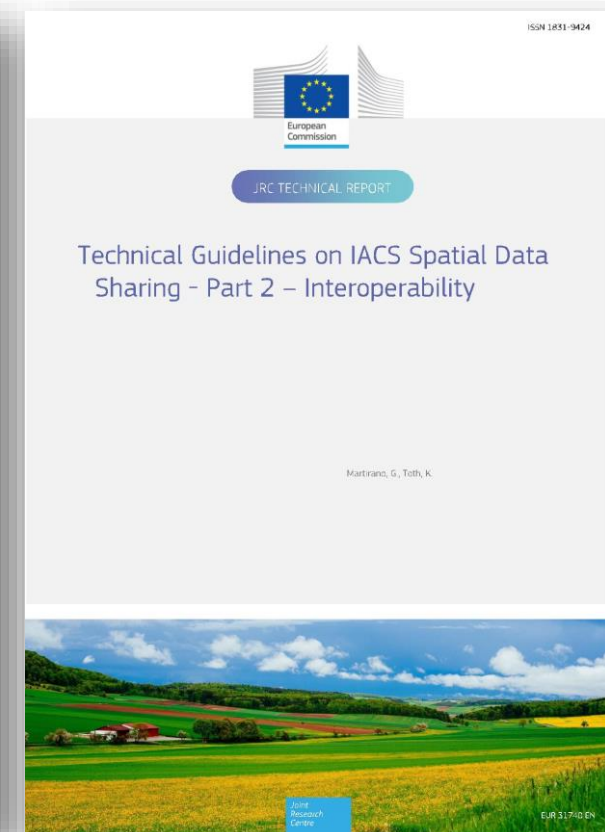
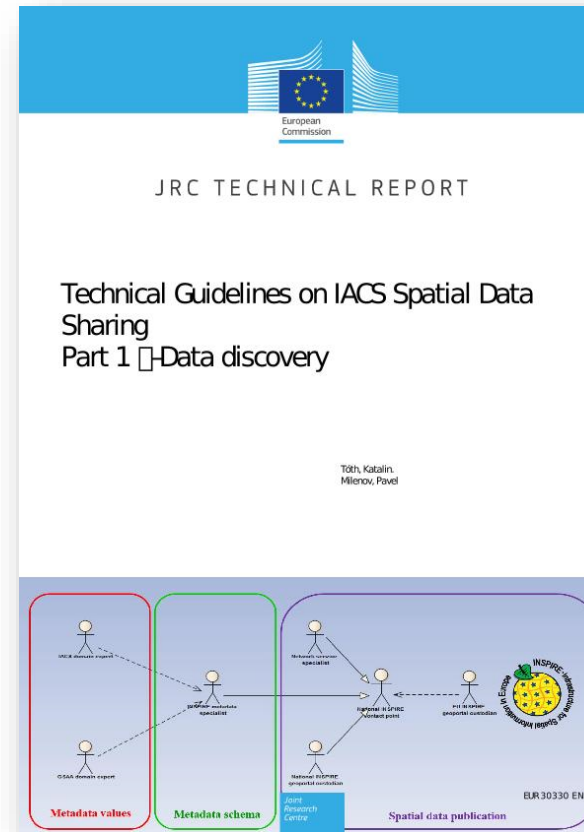
Spatial Ag
Informatic

Discussion proposal

At the moment, to be able to consult the technical specifications you have to do a search on the Web which is not always direct and furthermore there is currently no official repository for the Technical Specifications and for the Application Schema.

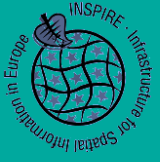
The proposal is:

Do we want to insert the Technical Specification and Application Schema into the INSPIRE Artifacts repository on GitHub?



<https://publications.jrc.ec.europa.eu/repository/handle/JRC132427>

<https://publications.jrc.ec.europa.eu/repository/handle/JRC121450>



ITALIAN OPERATIONAL GUIDELINES FOR HIGH-VALUE DATASETS

77th MIG-T Meeting

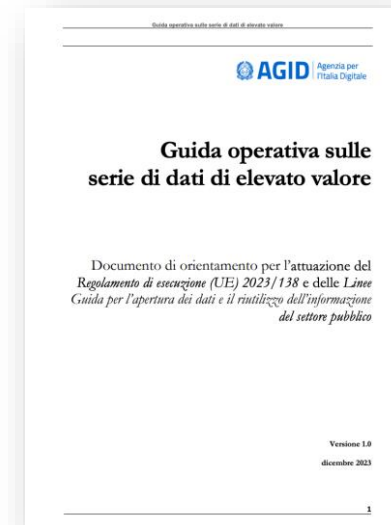
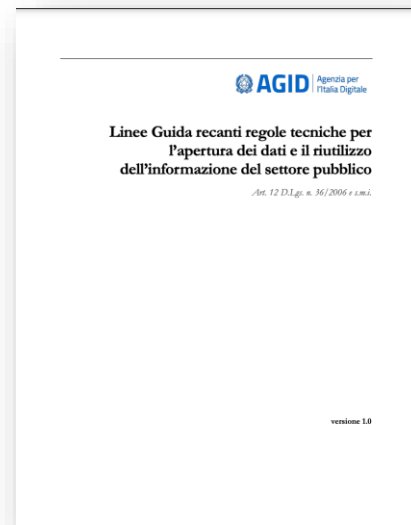
Carlo Cipolloni

ISPRA/INSPIRE National Technical Responsible/MIG-T

The Italian action to align INSPIRE activities and the publication of High Value Data

In the transposition of the Open Data Directive (1024/2019/EU), a binding National Technical Specification for the Administrations on the publication of open data was provided. This Guideline “Guidelines containing technical rules for data opening and reuse of public sector information” are published in August 2023 and in it, in compliance with regulation 138/2023/EU, it was requested to publish an Operational guideline on HVDs publication.

https://www.agid.gov.it/sites/default/files/repository_files/lg-open-data_v.1.0_1.pdf



https://www.agid.gov.it/sites/default/files/repository_files/guida_operativa_hvd_ver.1.0.pdf

Italian Operational guideline on HVDs

Chapter 4 General principles ... 20

4.1 General requirements for publication ... 20

4.2 General requirements for reuse ... 23

Azione #hvd6

For High Value Data that fall within the scope of INSPIRE, follow the network services implementation instructions of **the relevant INSPIRE Technical Guidelines**, with particular reference to the **Get Service Metadata*** operation where applicable.

which corresponds to the OGC Services **GetCapabilities document*

After a general part in which the principles for publication and reuse are recalled, reiterating that the technical rules of INSPIRE must be followed for territorial data; for each topic indicated by the regulation, a reference framework is described and provided on the state of the art and the actions to be undertaken.

Italian Operational guideline on HVDs

Chapter 5 Specific requirements ... 26

5.1 Geospatial data ... 26

5.1.1 Administrative units ... 26

5.1.2 Geographical names ... 29

5.1.3 Addresses ... 31

5.1.4 Buildings ... 32

5.1.5 Land registry parcels ... 35

5.1.6 Reference parcels ... 38

5.1.7 Agricultural parcels ... 42

5.2 Earth observation and environmental data ... 45

5.2.1 Hydrography ... 45

5.2.2 Protected sites ... 48

5.2.3 Elevation ... 53

5.2.4 Geology ... 56

5.2.5 Land cover ... 60

5.2.6 Ortho images ... 63

5.2.7 Areas subject to management/restrictions/regulation and units with obligation to report data ... 65

5.2.8 Biogeographical regions ... 68

5.2.9 Energy resources ... 68

5.2.10 Environmental monitoring systems ... 72

5.2.11 Habitats and biotopes ... 75

5.2.12 Land use ... 78

5.2.13 Mineral resources ... 81

5.2.14 Natural risk areas ... 84

5.2.15 Oceanographic geographic elements ... 89

5.2.16 Production and industrial plants ... 91

5.2.17 Marine regions ... 94

5.2.18 Soil ... 97

5.2.19 Distribution of species ... 100

5.2.20 Air ... 103

5.2.21 Climate ... 106

5.2.22 Emissions ... 109

5.2.23 Nature Conservation and Biodiversity ... 112

5.2.24 Noise ... 116

5.2.25 Waste ... 118

5.2.26 Water ... 121

In the case of HDVs relating to environmental directives, in addition to the descriptive sheet on the state of the art and the actions to be undertaken, a summary table has also been created by cross-referencing the data required by the Directives with the list of Priority Datasets.

Italian Operational guideline on HVDs

Regulation requirement	State of art	Actions
Attribute description	<i>Are the indicated attributes already present?</i>	<i>Indications on how to harmonize the attributes or add missing ones.</i>
License to apply (CC BY 4.0 or CC0 or equivalent)	<i>Is a license already applied? Is it compatible with those indicated?</i>	<i>Which license do you plan to apply? Those indicated or an equivalent one (possibly justify)?</i>
Open, machine-readable format	<i>Formats in which the data is distributed</i>	<i>Indications on actions necessary to adapt the formats or make the data available in formats that respect the characteristics of open data.</i>
API and bulk download	<i>Are APIs already available? Which?</i>	<i>Are there any plans or programs on future APIs? Guidance on actions necessary to implement the required APIs.</i>
Data update	<i>How often is the data updated?</i>	<i>Is there a data update plan? What is needed to update the data?</i>

Italian Operational guideline on HVDs

Regulation requirement	State of art	Actions
Metadata	<i>Is the data already documented through metadata? Do they follow national standards? Are they documented in national catalogues?</i>	<i>Indications on actions necessary to adapt metadata to national standards</i>
Complete, publicly accessible online documentation that describes at least the structure and semantics of the data	<i>In cases where the reference is not INSPIRE, is there such documentation?</i>	<i>Indications on actions necessary to adapt and harmonize the data with respect to the reference specifications</i>
The datasets shall use controlled, publicly documented and Union or internationally recognized vocabularies and taxonomies, where available	<i>Which semantic assets are used?</i>	<i>Indications on semantic assets that can be used</i>

Example of intersection: Priority Dataset vs Directive Dataset in HVDs.

WHAT DATA ARE SUBJECT TO DATASETS IDENTIFIED

WHAT DATA ARE SUBJECT TO DATASETS IDENTIFIED

Articles 4, 9 and 12 of Directive 2009/147/EC (Birds Directive)

Art. 4 Information on Natura 2000 sites (SPAs, Birds Directive) - identifies with **PS INSPIRE** Natura 2000 dataset

Art. 9 National Report on Derogations under the Birds Directive

Art. 12 Report on progress and implementation (Birds Directive) - is identified with the following **SD INSPIRE** datasets: a) Distribution of birds; b) Sensitive distribution of birds; c) Bird range; d) Sensitive range of birds

Articles 4, 6, 16 and 17 of Directive 92/43/EEC (Habitats Directive)

Art. 4 Information on Natura 2000 sites (SCI/ZSC, Habitats Directive) - identifies with **PS INSPIRE** Natura 2000 dataset

Art. 6 Information on compensatory measures

Art. 16 National Report on Derogations under the Habitats Directive

Art. 17 Report on progress and implementation (Habitats Directive) - is identified with the following **SD INSPIRE** datasets: a) Distribution of Species; b) Sensitive distribution of species; it is also identified with the following **HB INSPIRE** datasets: a) Habitat Distribution

BIODIVERSITY