

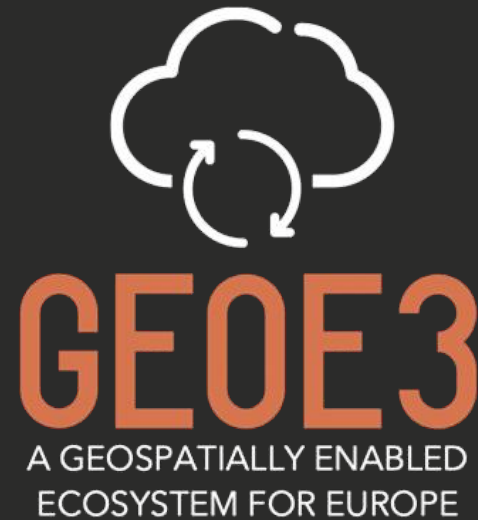


Co-financed by the Connecting Europe
Facility of the European Union

GEOE3 WORKING TOWARDS DATA SPACES AND DIGITAL TWINS

JARI REINI, NLS FINLAND

65TH MIG-T - 2021/04/16



- Common data spaces include; green deal, mobility, health, financial, energy, agriculture, public admin and skills
- Location connects different data and makes it understandable
- Digital twins means not only 3D data but also various dashboards combining huge data volumes
- Everything happens somewhere so location-based user interfaces are natural



Source:<https://kartta.hel.fi/3d/heating/Apps/Helsinki/view.html>

Better access and interoperability of Geospatial data /other data

- Usability of metadata information – e.g. dashboards
- Integration with other data (e.g. statistics, weather data)
- Accessibility through European Data Portal (DCAT.AP)

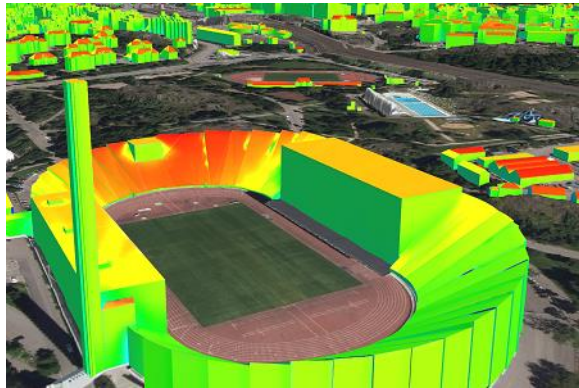
Dynamic harmonisation of geospatial data based on use cases and new APIs

- Example Cloud Platform which will demonstrate use cases and then used for national platform implementations through different APIs and tools

Build an ecosystem based on national platforms

- eLearning videos
- Innovation events
- Benefits

- • Part of Connecting Europe Facility –programme
- • Budget 2.6 million euro, funding 1.9 million euroa
- • Partners 12
 - • National Land Survey of Finland
 - • Finnish meteorological Institute
 - • Statistics Finland
 - • Spatineo (Finland)
 - • Norwegian Mapping Authority
 - • Cadastre, Land Registry and Mapping Agency
 - • Open Geospatial Consortium Europe
 - • CENTRO NACIONAL DE INFORMACIÓN GEOGRÁFICA Spain
 - • Estonian Land Board
 - • Information Technology Center of the Ministry of the Environment Estonia
 - • Aveni Intelligent Communication Norway
 - • DIRECCION GENERAL DEL CATASTRO Spain
- • Started October 2020, 3 years



Solar energy potential and energy efficiency of buildings

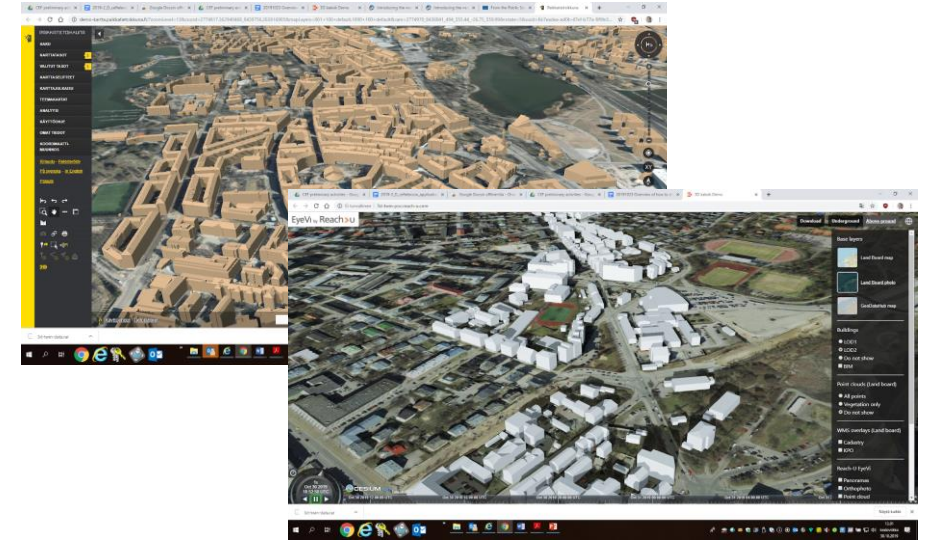
Optimized use of solar energy

Reliable, future-proof planning of buildings



Co-operative Intelligent Transport Systems and Advancing map enhanced driver assistance systems leading to automated driving

Cleaner and safer transport



Cross border & Cross domain Smart City Finland Estonia

City planning for sustainable energy

Sustainable urbanization

Spatial

- Point clouds, Orthophotos
- 3D building model with LoD 2 detail
- Building footprints and address data
- Cadastral data
- Digital Elevation Model, Digital Surface Model (DSM) of the surrounding area
- 2D and 3D road data
- Building plans, urban planning
- Land use and Land cover

**Connected by
Location
Persistent ID
Address**

Other

- Relevant building attributes
- Shadow index coverage
- Number of sunshine hours at the nearest observation station
- Average wind conditions
- Normal air temperature at the nearest observation station
- Monthly mean temperature based on climate scenarios
- Traffic data
- Road signs and Speed limits
- Traffic accidents
- Population statistics
- Petrol stations

1 - Administration and
action management
(NLS-FI)

2 - Content Discovery
and Evaluation
(DISCOVER) (KAD-NL)

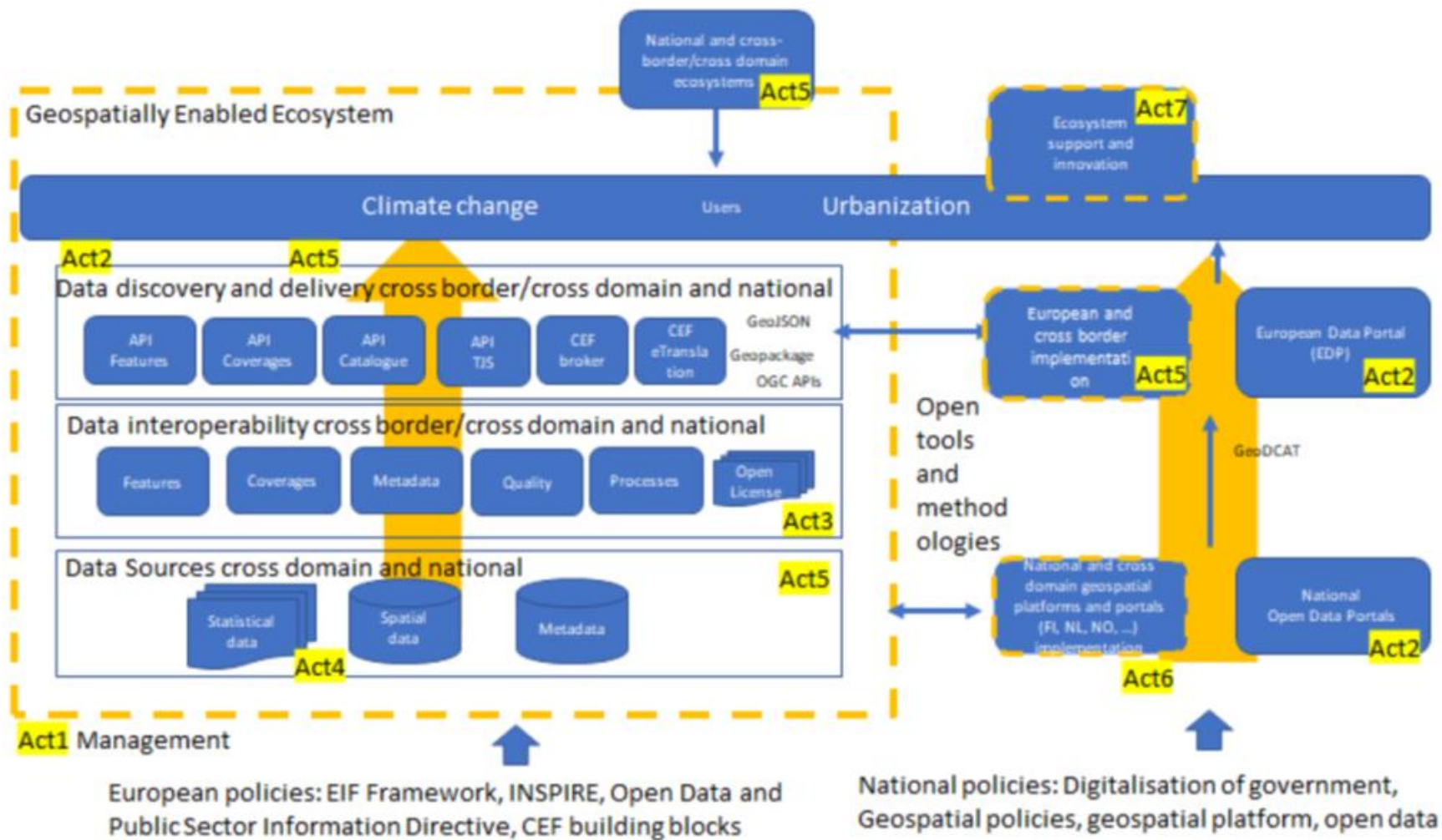
3 - Data interoperability
of the Geospatially
Enabled Ecosystem
(IMPROVE) (KARTV-NO)

4 - Integration of tabular
data in the Geospatially
Enabled Ecosystem
(DISCOVER) (NLS-FI)

5 - Service and tool
development for the
Geospatially Enabled
Ecosystem (IMPROVE)
(FMI-FI)

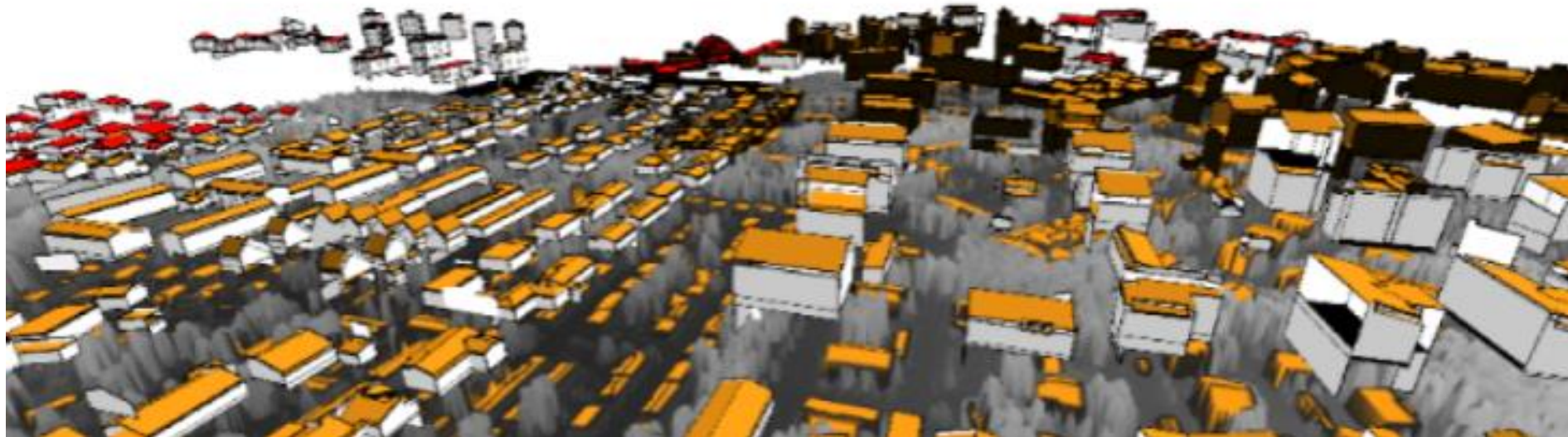
6 - National platform
and cross domain spatial
platforms and portal
implementation (GROW)
(NLS-FI)

7 - Support and
innovation for the
Geospatially Enabled
Ecosystem (GROW)
(OGC-BE)



STATUS OF WORK

- Use cases completed
- Dataset identification ongoing within countries
- Technical architecture work started
- Cloud environment being set up
- Trials with OGC API's started





Home

GeoE3 OAPIF Buildings

Experimental service for cross-border provision of buildings

[geospatial](#) [ecosystem](#) [cross-border](#) [building](#)

Terms of service
License

<https://creativecommons.org/licenses/by/4.0/>
CC-BY 4.0 license



Contact

Collections

View the collections in this service

API Definition

[Documentation](#)

[OpenAPI Document](#)

Conformance

View the conformance classes of this service

Home / Collections

Collections in this service

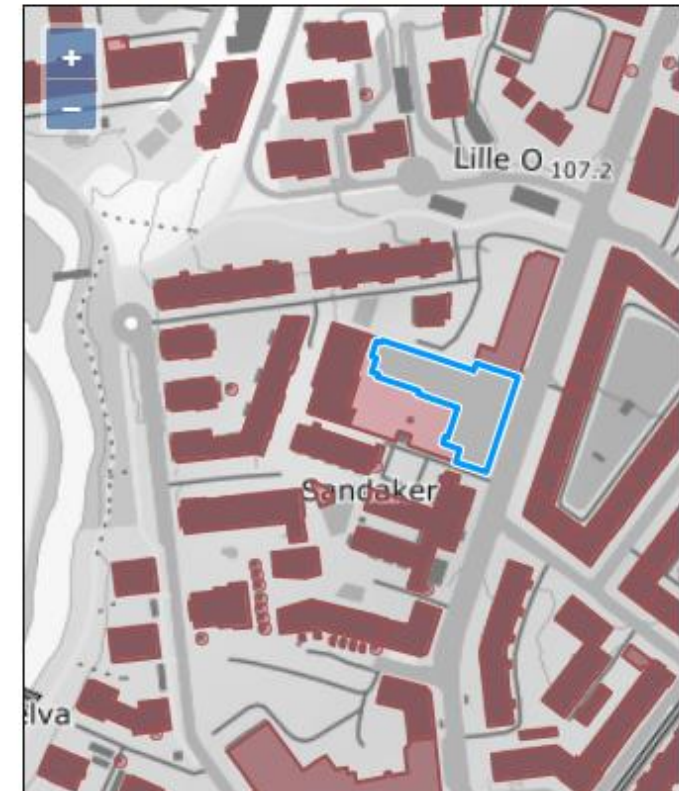
Name	Type	Description
Finland	Feature	Buildings from NLSFI
Norway	Feature	Buildings from Kartverket
Spain	Feature	Buildings from Spanish Cadastre



Home / Collections / Norway / Items / Buildings

Norway

Zoom in to see the items in this collection.



- Communication & Dissemination plan
- Website & Social Media www.geoe3.eu
- Support Events for new APIs and tools
- Innovation Events
- 9 eLearning modules
- GeoE3 network: Based on national geo-platforms, developers, users

- APIs supporting the platform
- Improved metadata access through the European Data Portal
- Tools for interoperability and quality
- Creating a network based on national and regional data providers willing to work on data interoperability
- E-learning videos
- Investigating now a possibility on creating European Digital Innovation Hubs on location



Shaping Europe's digital future

[Home](#) [Policies](#) [News](#) [Library](#) [Funding](#) [Calendar](#) [Consultations](#)

[Home](#) > [European Digital Innovation Hubs](#)

ACTIVITY | 23 MARCH 2021

European Digital Innovation Hubs

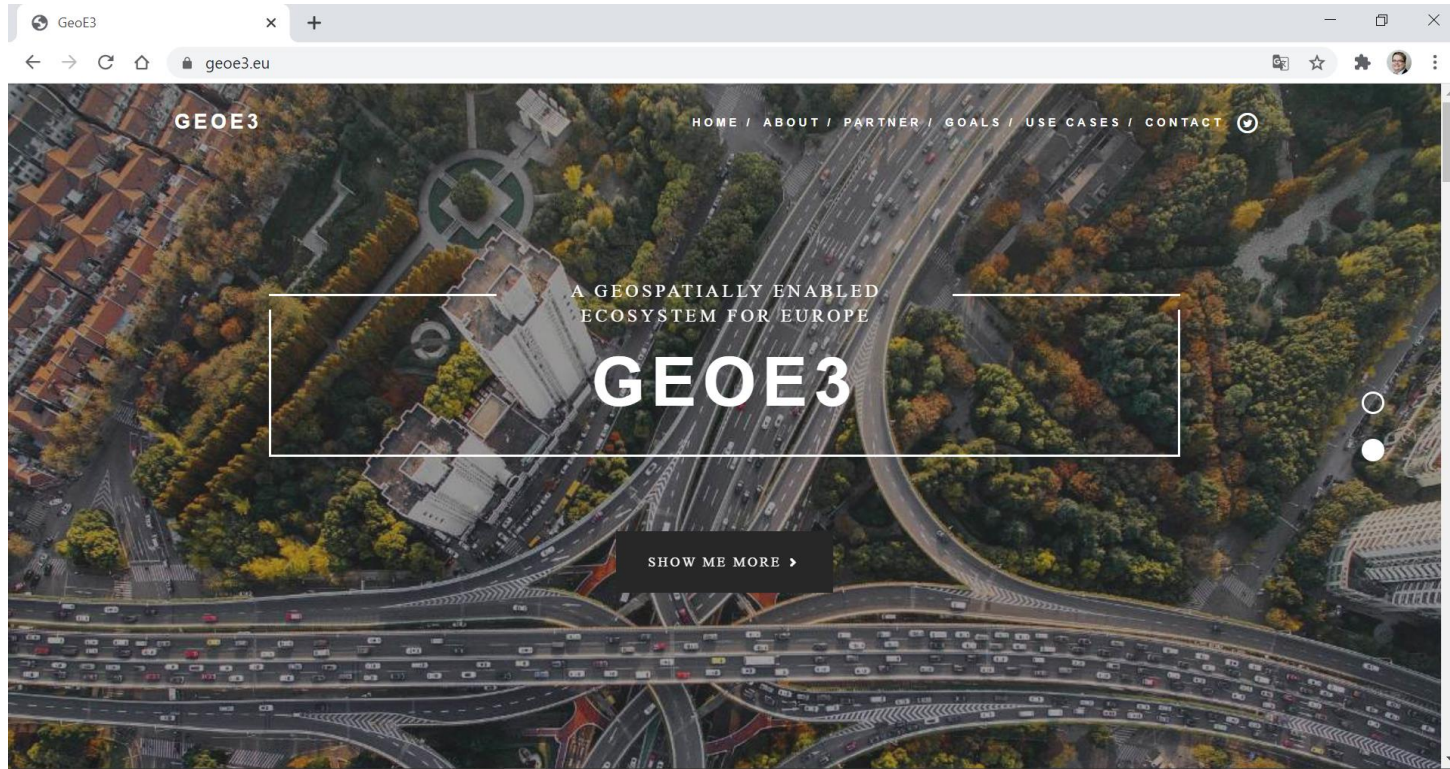
European Digital Innovation Hubs (EDIHs) will function as one-stop shops that help companies dynamically respond to the digital challenges and become more competitive.

By providing access to technical expertise and experimentation as well as the possibility to “test before invest”, EDIHs help companies improve business/production processes, products, or services using digital technologies. They also provide innovation services, such as financing advice, training, and skills development that are needed for a successful digital transformation. Environmental issues are also taken into account, in particular with regard to energy consumption and low carbon emissions.

Location Innovation Hub was accepted as one candidate for a European Digital Innovation Hub

National Land Survey proposal for creating a Location Innovation Hub (LIH) is one of the candidates from Finland for a European Digital Innovation Hub (EDIH). At best, these hubs could start their activities during 2021.

[More information](#)



GEOE3.EU