



IACS data sharing & INSPIRE update

**18th INSPIRE MAINTENANCE AND IMPLEMENTATION
EXPERT GROUP MEETING (MIG)**

AGRI A4, JRC D3 & JRC D5

30/11/2023

«IACS data sharing» activities

Update

IACS data sharing activities

Technical guidelines (interoperability)

Spatial Agricultural Information System

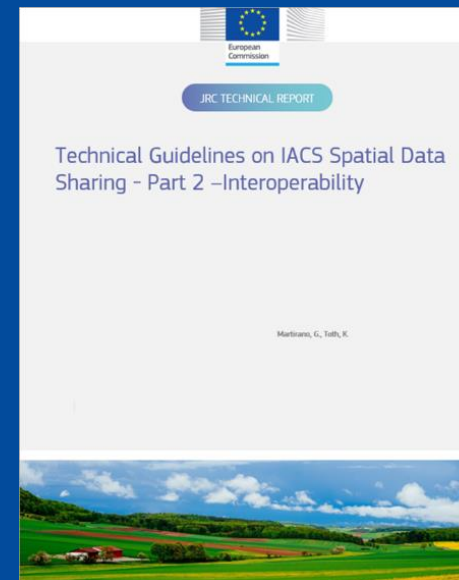
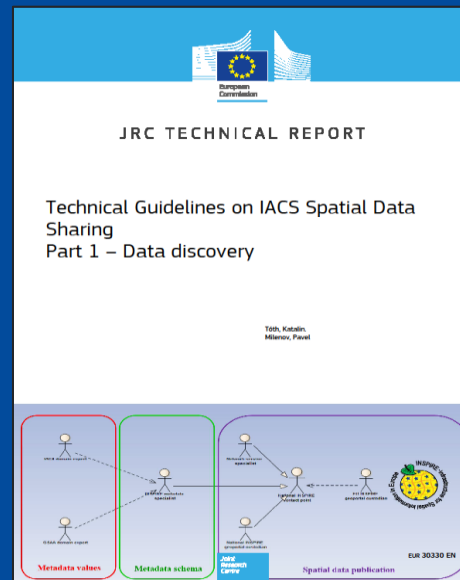
«IACS data sharing» activities

Legal obligation
for Member
States?

REGULATION (EU) 2021/2116 Article 67

3. Member States shall ensure that data sets collected through the integrated system which are relevant for the purposes of Directive 2007/2/EC of the European Parliament and of the Council ⁽³³⁾ or for monitoring Union policies are shared free of charge between its public authorities and made publicly available at national level. Member States shall also provide the institutions and bodies of the Union with access to those data sets.

- Data sharing following INSPIRE rules: discovery, access, interoperability



Spatial Ag
Information

«IACS data sharing» activities

Legal
obligation for
Member
States?

REGULATION (EU) 2021/2116 Article 67

3. Member States shall ensure that data sets collected through the integrated system which are relevant for the purposes of Directive 2007/2/EC of the European Parliament and of the Council ⁽³³⁾ or for monitoring Union policies are shared free of charge between its public authorities and made publicly available at national level. Member States shall also provide the institutions and bodies of the Union with access to those data sets.

- Coordination by AGRI through the Agri-food data portal

European Commission | Member State Geoportals (including some IACS data)
Directorate-General for Agriculture and Rural Development

Ⓞ Show Spain Ⓞ Show Spanish regions

Map showing Member State Geoportals (including some IACS data). A pop-up for DK-Denmark is visible, containing buttons for Link to Geoportal, Filter spatial data, and Back to EU.

To display the spatial data for an area, please select a single area on the map or in the table below.

NUTS	Field	Value
AT	Geoportal	https://geometatensuche.inspire.gv.at/resultType=details&sortBy=relevance&version=1.3.0&request=GetCapabilities
AT	WMS link (GIS environment)	https://inspire.lfrz.gv.at/009501/wms?version=1.3.0&request=GetCapabilities
AT	WMS link (online Geoportal)	http://geometatensuche.inspire.gv.at/2098-4759-8e15-604dccc668396
AT	Shapefile	GeoPackage available
AT	GML	available
AT	LPIS data	https://geometatensuche.inspire.gv.at

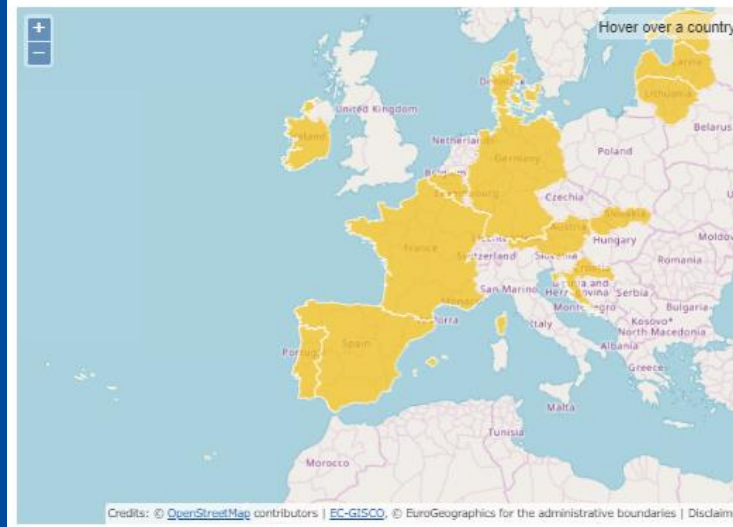
«IACS data sharing» activities

Member States
implementation?

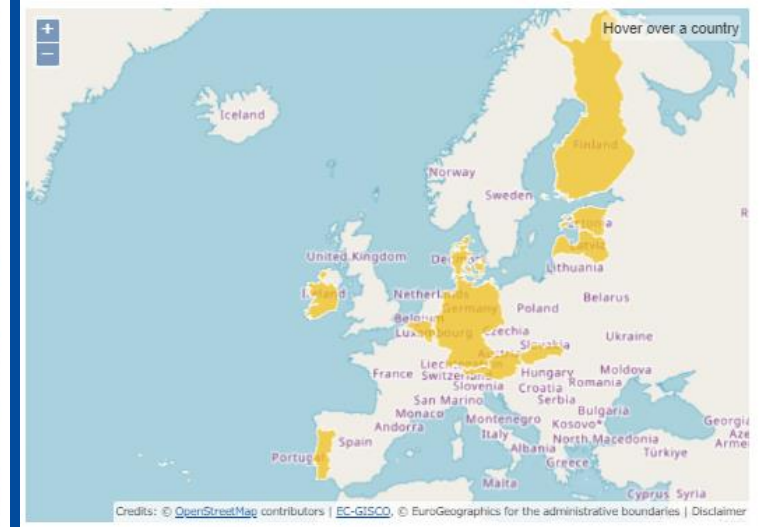
INSPIRE Directive 2007/2/EC



Data sets by IACS: LPIS



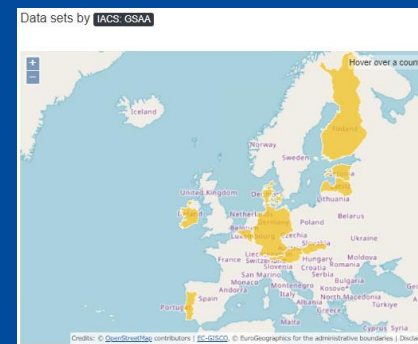
Data sets by IACS: GSAA



<https://inspire-geoportal.ec.europa.eu>

«IACS data sharing» activities

Call for collaboration
MIG/Paying agency?

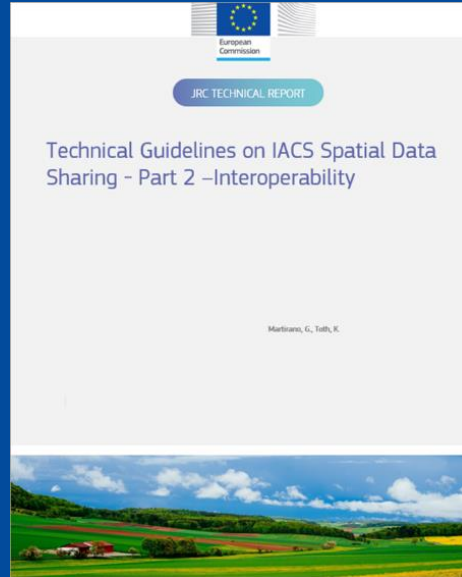


Discussion group (to be invited): DE, GR, CY, MT, LU, RO, HU, BG

Bilateral meeting (Q1 2024): fixed with Spain (with FEGA and Regional agencies) and Italy (AGID, ISPRA and AGEA)

«IACS data sharing» activities

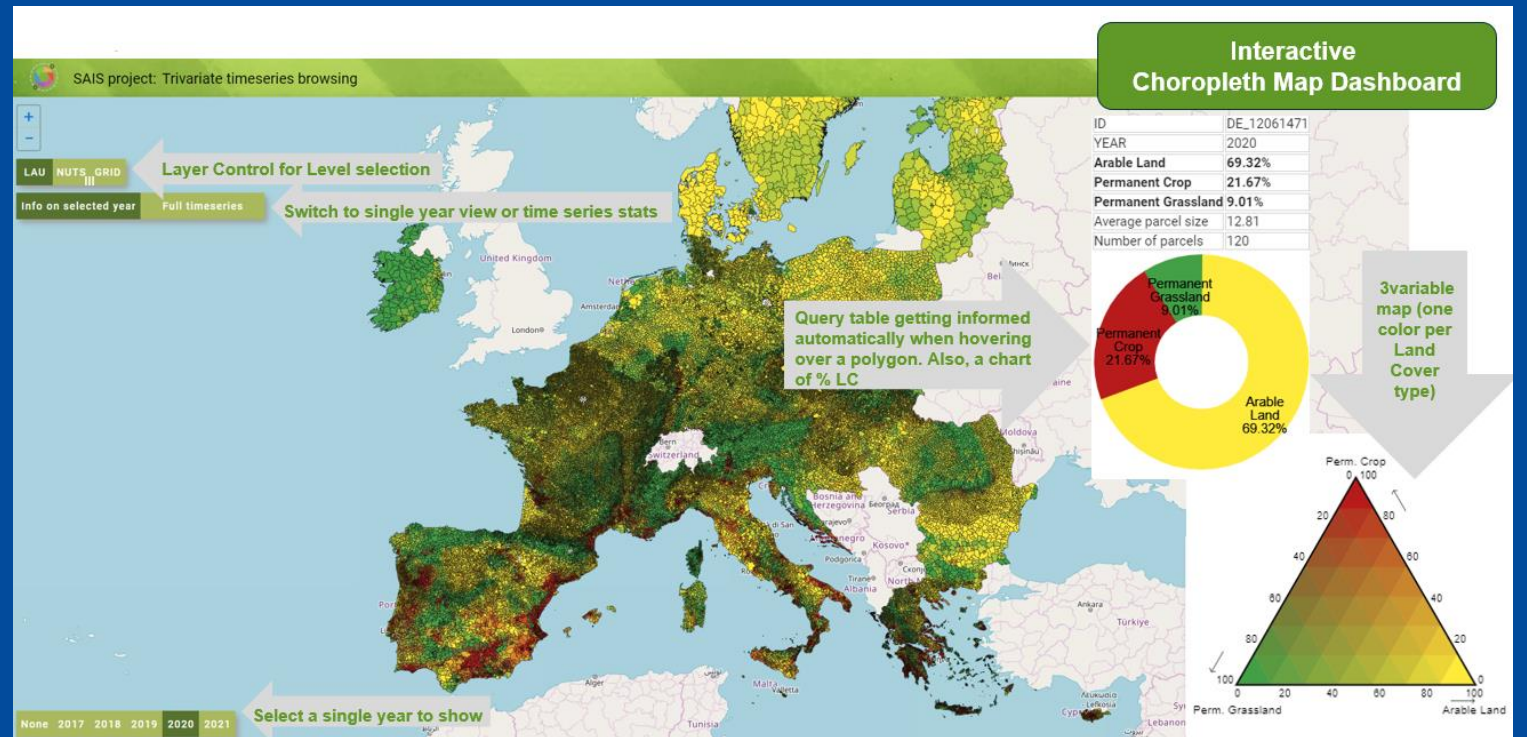
SAIS



→ JRC D5

«IACS data sharing» activities

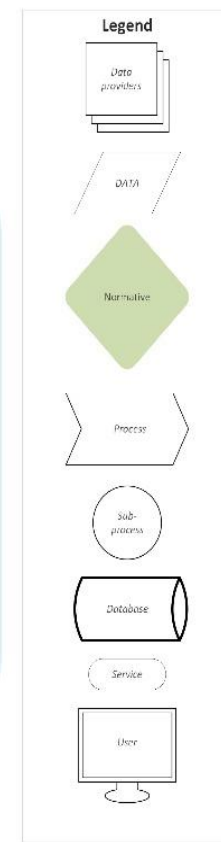
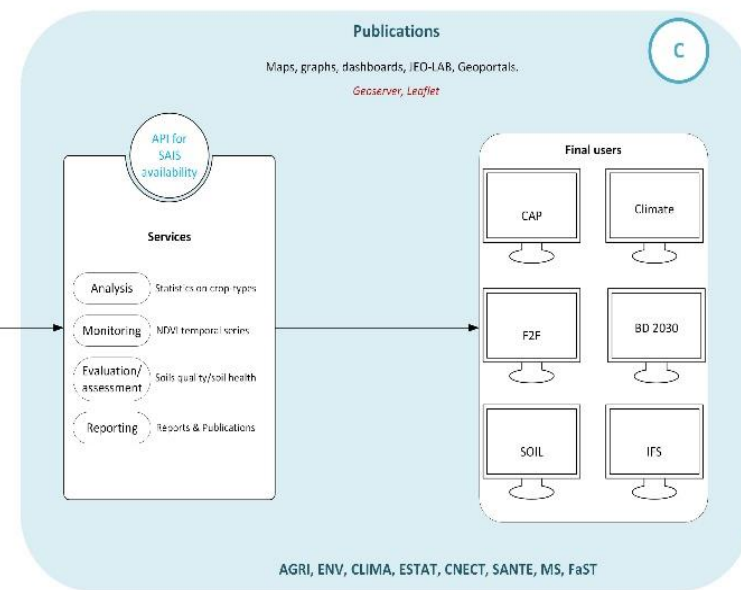
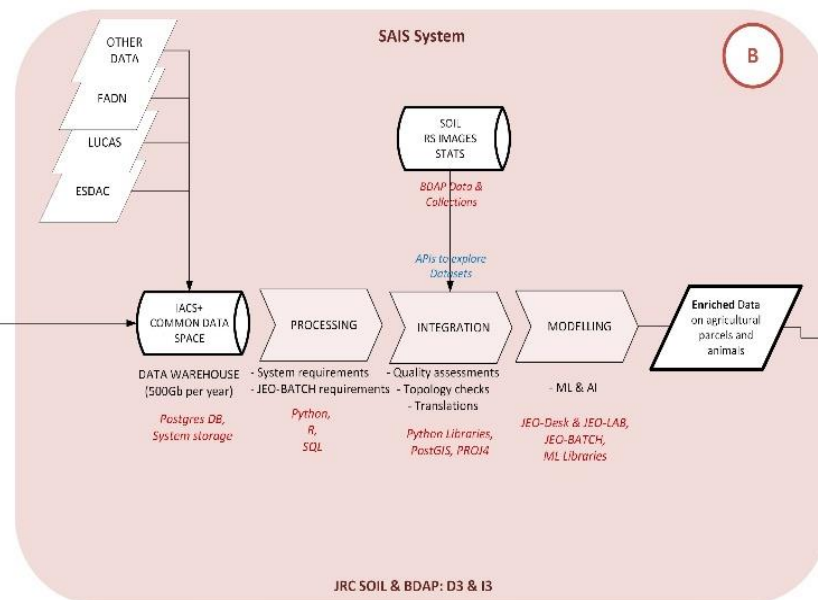
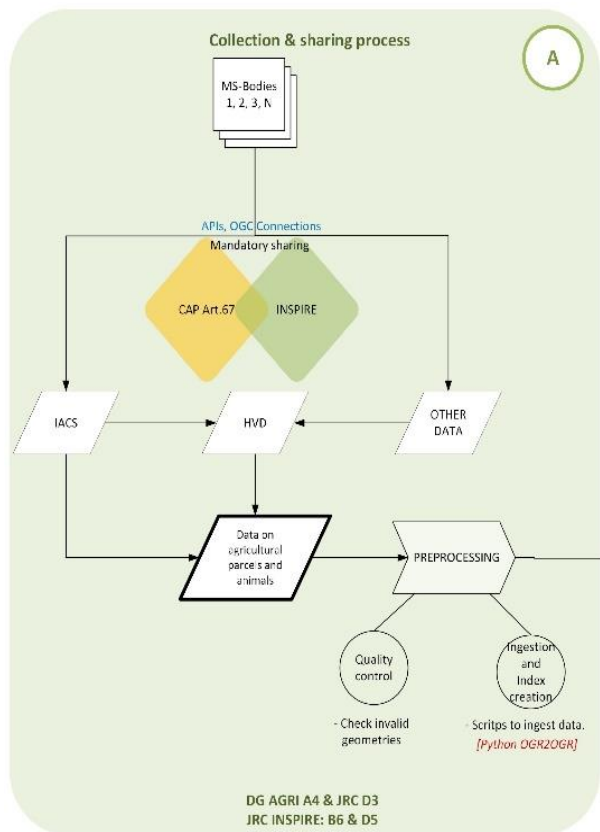
SAIS



→ JRC D3

Spatial Agricultural Information System

Project Leaders: DG AGRI A4 & JRC D3

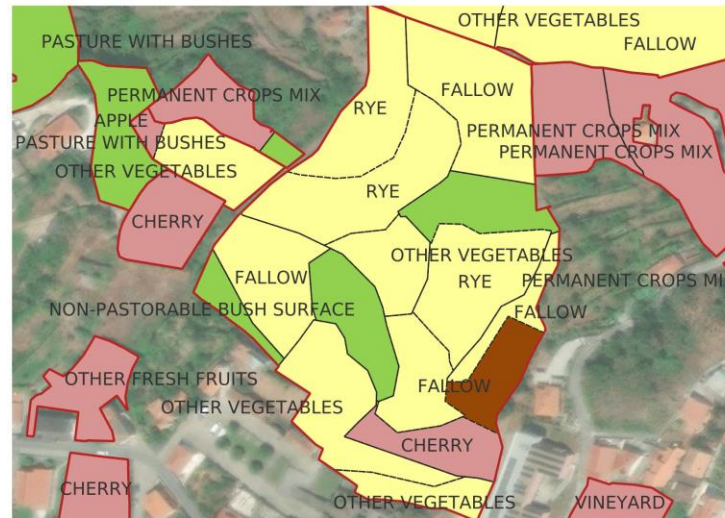
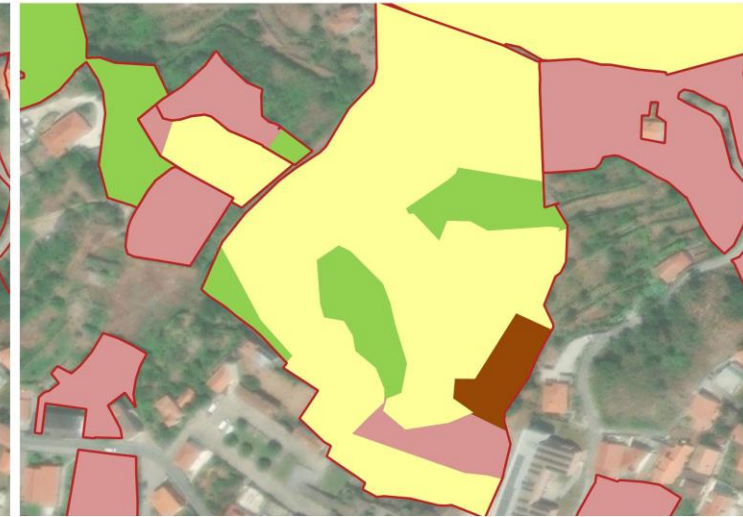
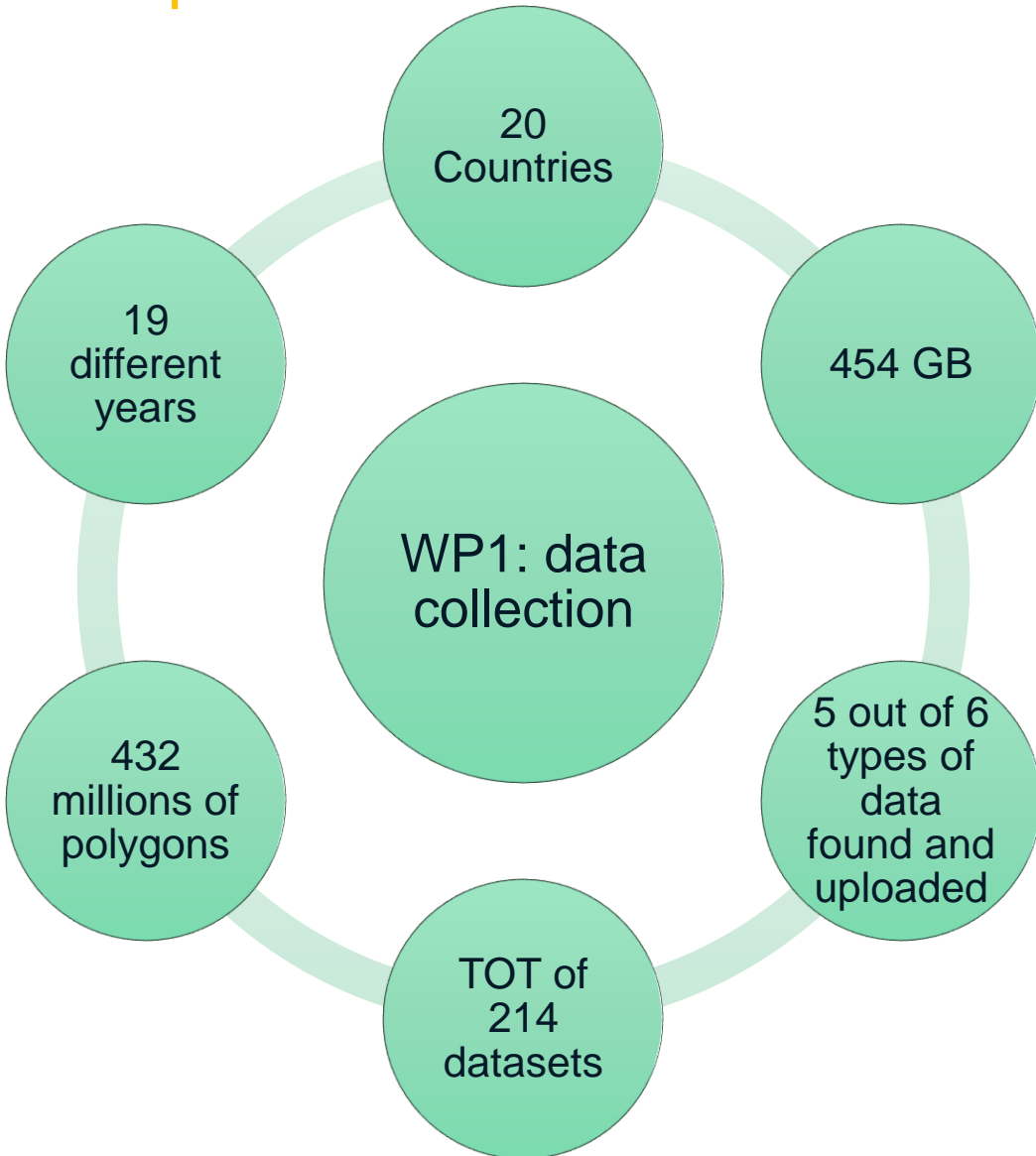


WP1: data collection

WP2: data integration

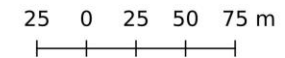
WP3: data publication

Spatial Agricultural Information System

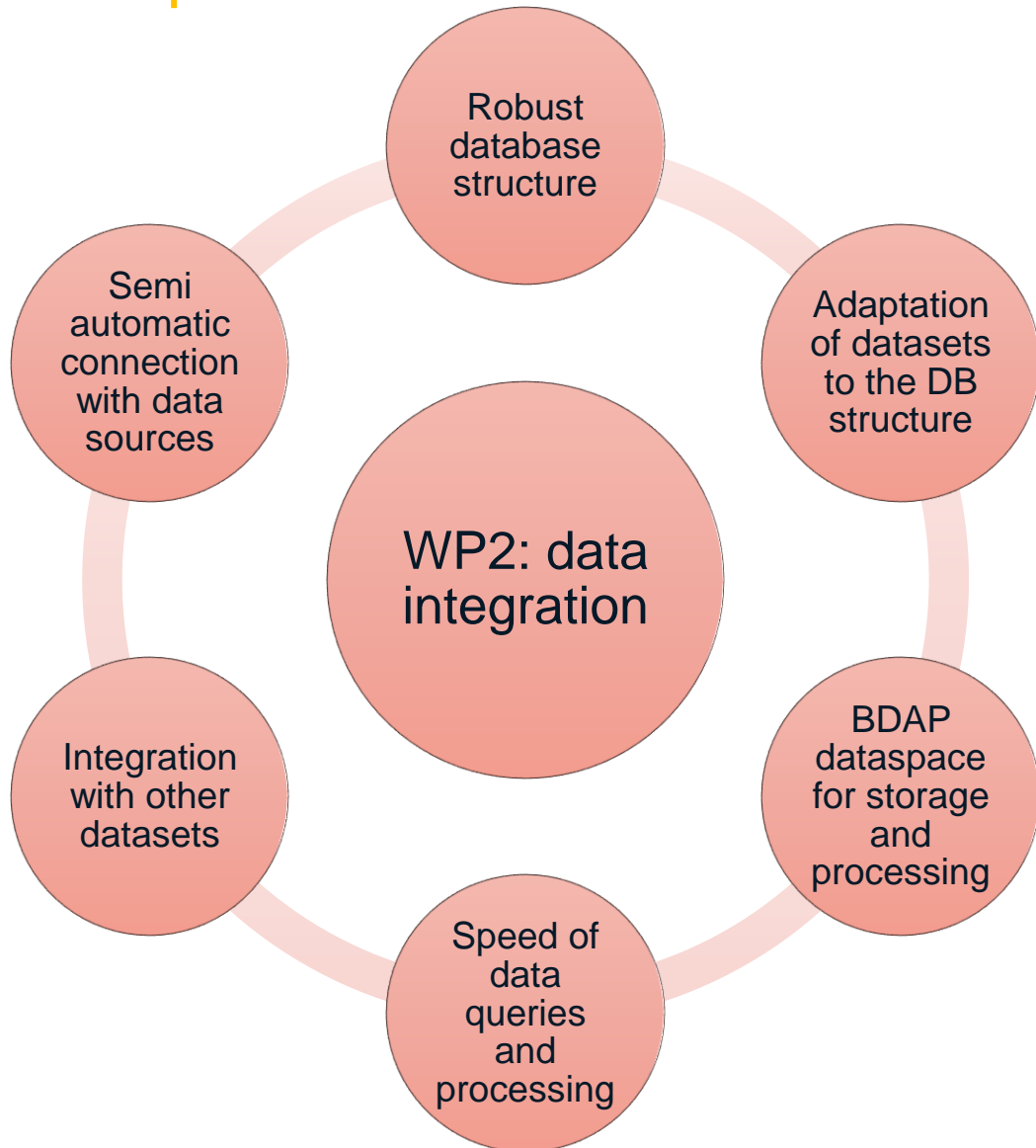


Main data types in SAIS system.
Examples of different tables in DB

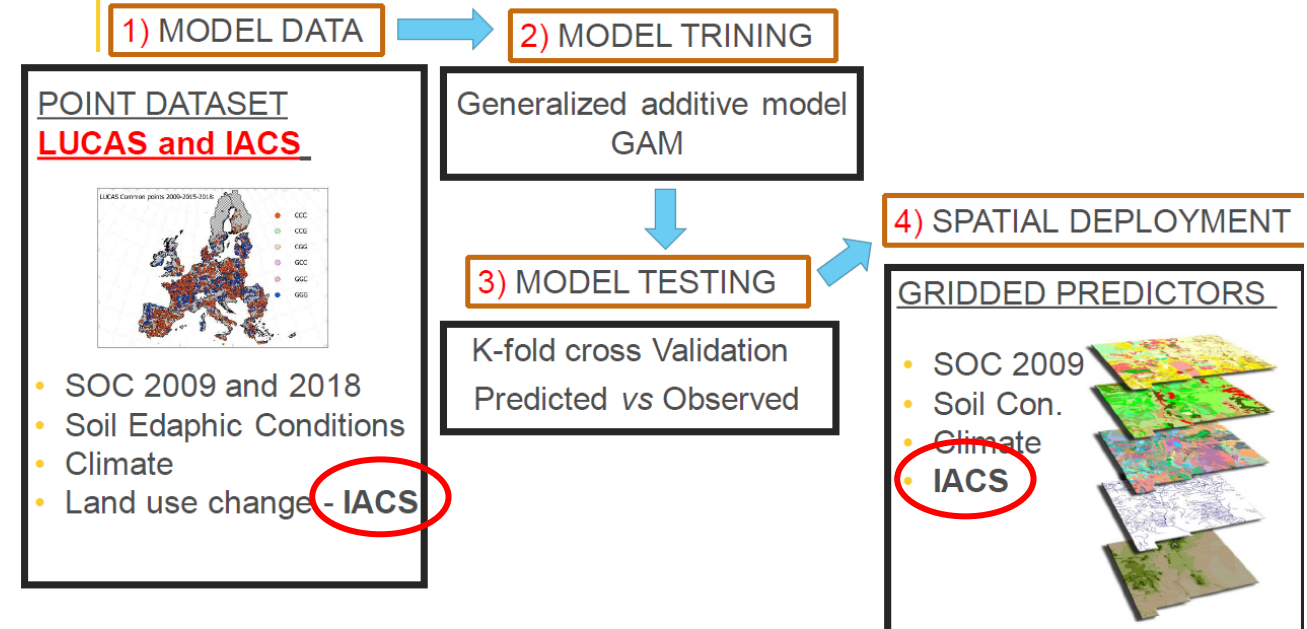
- Reference parcels
- Agricultural parcels
- Agricultural areas
 - afforestedArea
 - arableLand
 - permanentCrop
 - permanentGrassland



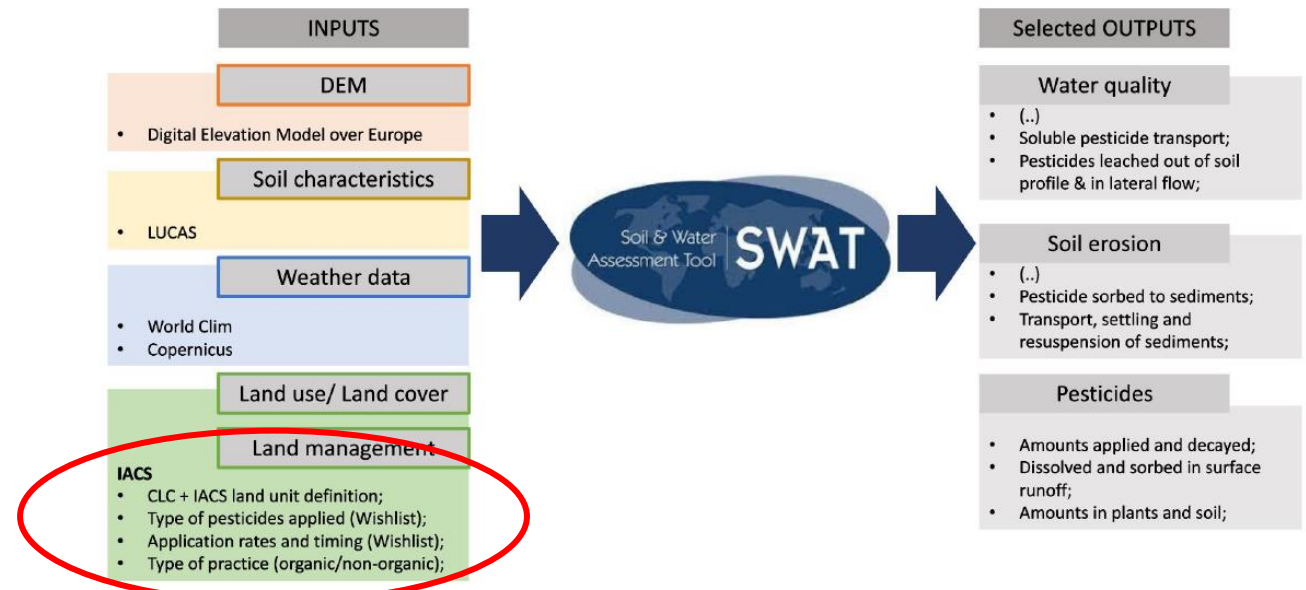
Spatial Agricultural Information System



SOC CHANGES - Modelling approach- Methods



Soil contamination by pesticides



Spatial Agricultural Information System

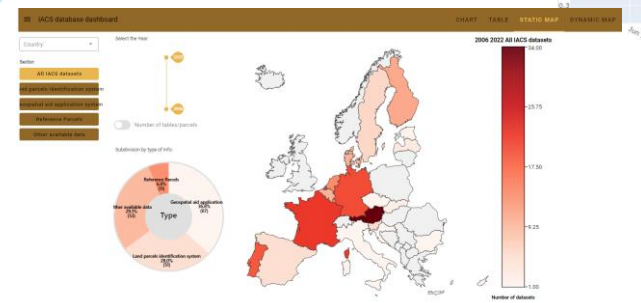
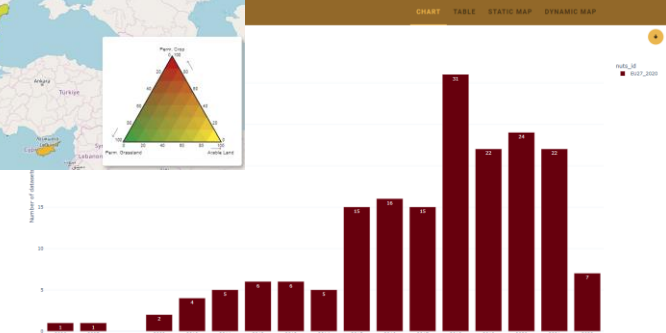
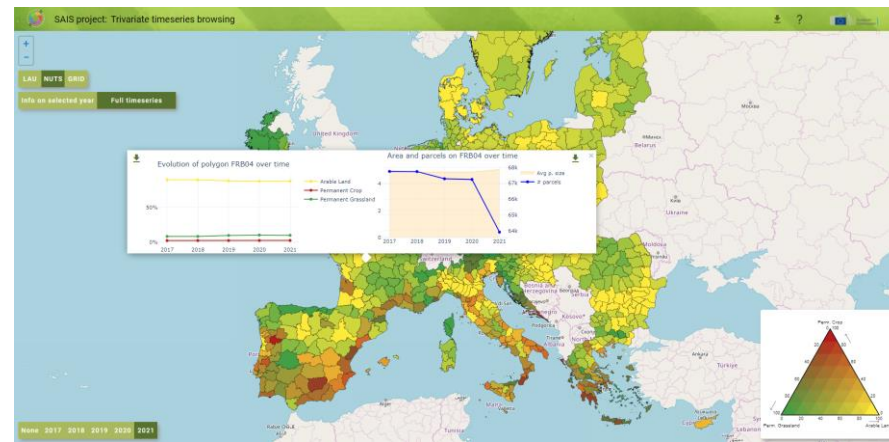
Dashboards

Reports and publications

WP3: data publication

API for SAIS availability

Geoportals



SAIS: next steps



Collection of a big amount of **IACS datasets within a robust SAIS DB structure, available for soil use-cases**



Dashboards for data visualizations and analysis



Gaps in metadata and data availability from MS on **INSPIRE Geoportal**



Interoperability amongst MS IACS data



compliance with **Technical Guidelines** on IACS Spatial Data Sharing. Part 1 – **Data discovery**



compliance with **Technical Guidelines** on IACS Spatial Data Sharing – Part 2 – **Data interoperability**

Thank you



© European Union 2020

Unless otherwise noted the reuse of this presentation is authorised under the [CC BY 4.0](https://creativecommons.org/licenses/by/4.0/) license. For any use or reproduction of elements that are not owned by the EU, permission may need to be sought directly from the respective right holders.

Slide xx: **element concerned**, source: e.g. [Fotolia.com](https://www.fotolia.com/); Slide xx: **element concerned**, source: e.g. [iStock.com](https://www.istock.com/)

